

Publication sponsored by
SERVIZIO GEOLOGICO D'ITALIA

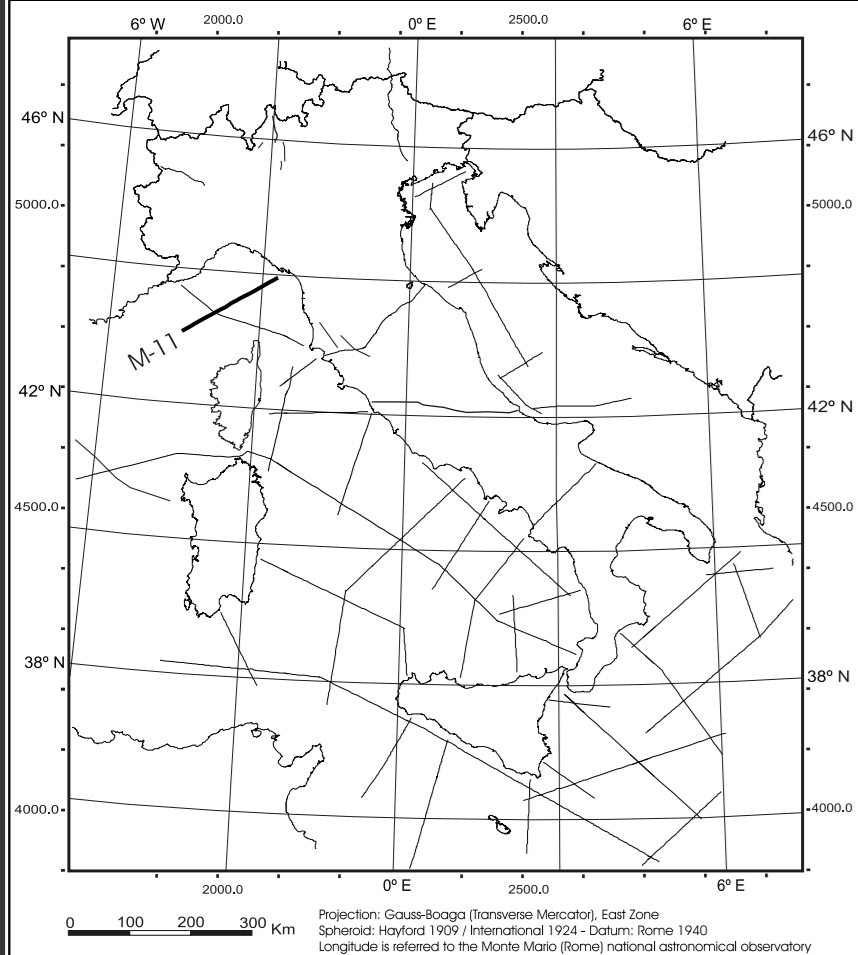
CROP



CROP ATLAS
SEISMIC REFLECTION PROFILES
OF THE ITALIAN CRUST

LINE : M-11

LOCATION MAP

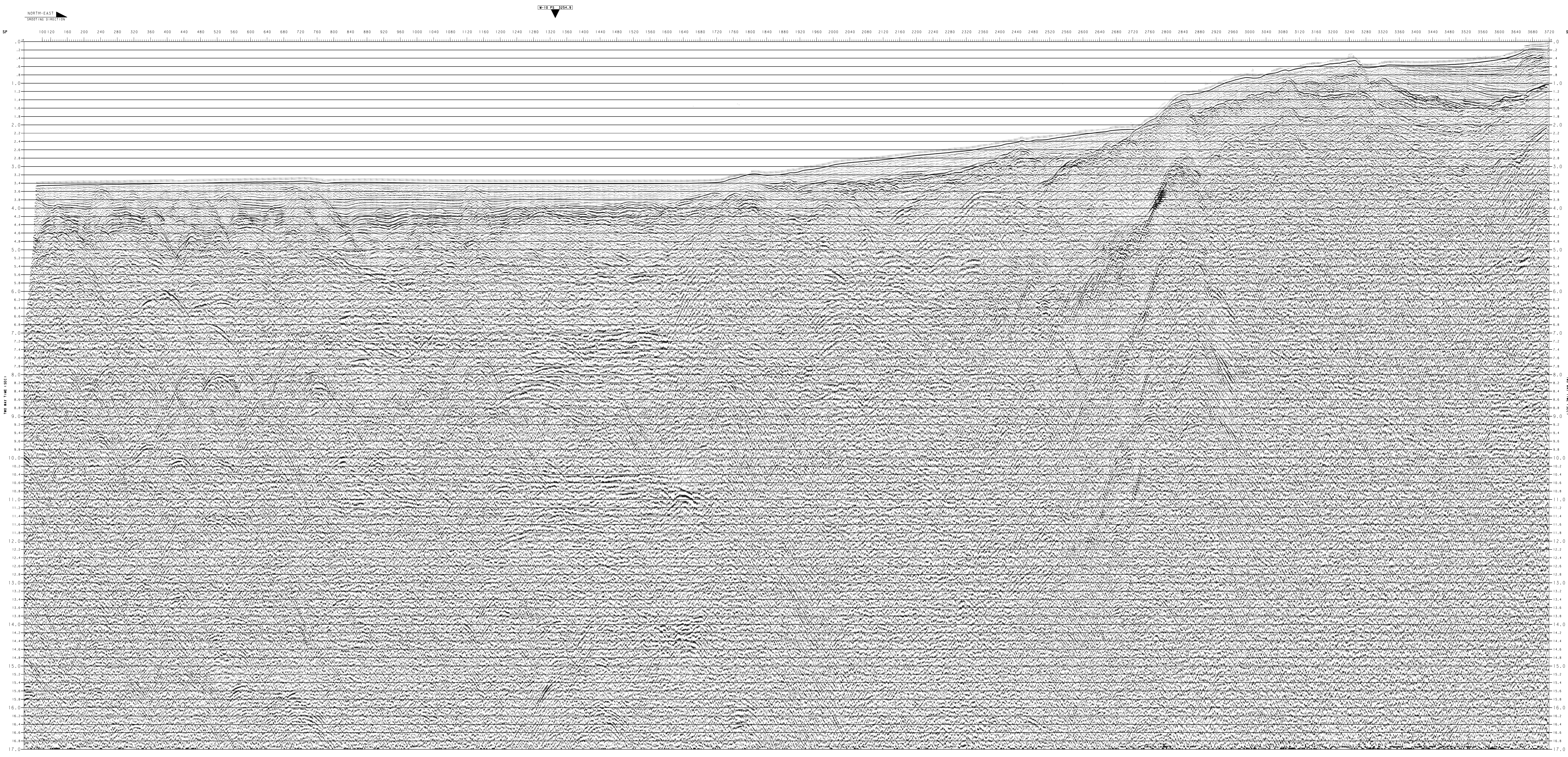


SCALES:
HORIZONTAL 1: 200,000
VERTICAL 2.5 CM - 1 SEC

DATUM PLANE : SEA LEVEL

<p>RECORDING DATA</p> <p>RECORDING DATE: 1991</p> <p>RECORDING PARAMETERS</p> <p>CONTAINER: 05 VESSEL: 055 EXPLORA RECORD LENGTH: 77:46:59.00 SAMPLING INTERVAL: 4.00 CONVERSION: 4.00</p> <p>SOURCE</p> <p>WELL: 4500 M N. OF GROUPS: 10 N. OF RECORDS: 10 AVG. CABLE DEPTH: 12 M</p> <p>CABLE</p> <p>WELL: 4500 M N. OF GROUPS: 10 N. OF RECORDS: 10 AVG. CABLE DEPTH: 12 M</p> <p>BOAT DIAGRAM</p>	<p>PROCESSING SEQUENCE</p> <p>PROCESSING DATE: 1991</p> <p>REFORMAT</p> <p>SEED TO XYS FLOATING POINT</p> <p>RESAMPLE</p> <p>TIME SAMPLING TO 8 MS</p> <p>GEOMETRY UPDATE</p> <p>DATA SORT</p> <p>SORT OF THE RECORDS TRACES WITH APPLICATION OF DIFFERENTIAL AND</p> <p>TIME ZERO RECOVERY</p> <p>USING THE FOLLOWING SYNTHETIC SEIN FUNCTION: $1.00 \times T - 1.5420 \times 10^{-11} \times T^2$</p> <p>DECONVOLUTION</p> <p>TYPE: PREDICTOR FILTER INU FILTER OF 32:388 MS</p> <p>MULTI-TIER ATTENUATION</p> <p>APPLICATION OF MULTITIER FILTER TO GATHERS CORRECTED FOR MULTIPLE VELOCITIES</p> <p>ARRAY SIMULATION</p> <p>TIME CORRECTION FOR SOURCE IN: APPLIED IN THE COMMON SHOT DOMAIN</p> <p>VELOCITY ANALYSIS</p> <p>USING COMMON VELOCITY ANALYSIS FUNCTION STACKS AND GATHERS AT AN AVERAGE INTERVAL OF 2.00 SEC. DISTANCE GATHERS BY THE POINT OF THE VELOCITY FUNCTION</p> <p>200' STACK 4500M</p> <p>OF ORDERED DATA AND CORRECTED WITH TIME VELOCITIES</p> <p>APPLICATION OF A NEAR TO FAR TRACE LINEAR DIFFERENTIAL WEIGHTING</p> <p>NOISE FILTER</p> <p>APPLICATION OF NOISE FILTER ATTENUATING SPTS GREATER THAN 8 TIMES OF DBS</p> <p>PREPARE STACK</p> <p>APPLICATION OF SIDE TRACING TRACE LATERAL PIVOT TO REDUCE STACK DIPPING NOISE</p> <p>TIME VERTICAL FILTER</p> <p>300 MS 1000 HZS BANDPASS FILTER THE WATER BOTTOM IS</p> <p>WATER: 1000 S1: 1000 S2: 1000 S3: 1000 S4: 1000 S5: 1000 S6: 1000 S7: 1000 S8: 1000 S9: 1000 S10: 1000</p>
--	--

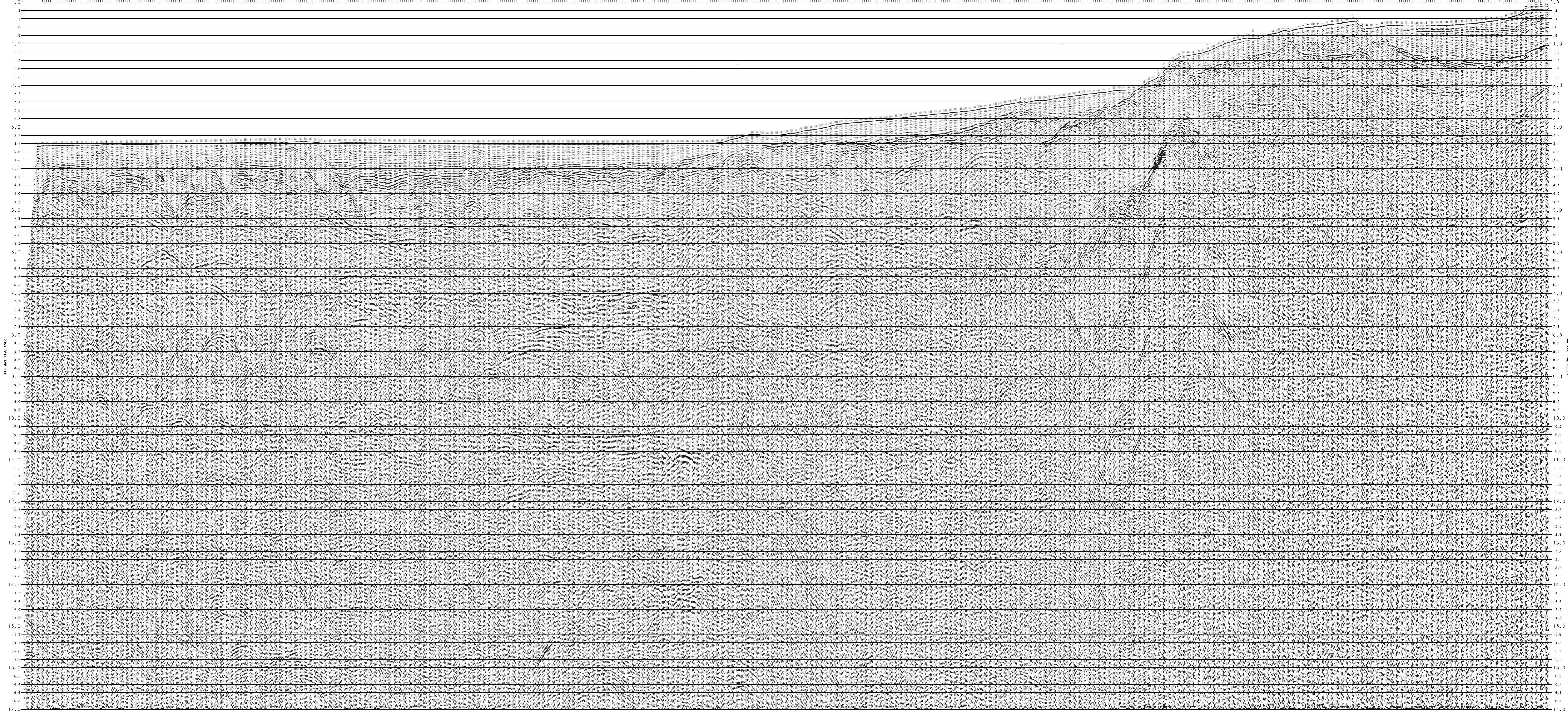
Data processed by: OGS
Cogn file generated by: ENI-AGIP DIVISION



NORTH-EAST
SHORTING DIRECTION

WIDE AREA

SP 100 120 160 200 240 280 320 360 400 440 480 520 560 600 640 680 720 760 800 840 880 920 960 1000 1040 1080 1120 1160 1200 1240 1280 1320 1360 1400 1440 1480 1520 1560 1600 1640 1680 1720 1760 1800 1840 1880 1920 1960 2000 2040 2080 2120 2160 2200 2240 2280 2320 2360 2400 2440 2480 2520 2560 2600 2640 2680 2720 2760 2800 2840 2880 2920 2960 3000 3040 3080 3120 3160 3200 3240 3280 3320 3360 3400 3440 3480 3520 3560 3600 3640 3680 3720 SP



THE MAX TIME LEVEL

THE MAX TIME LEVEL

17.0 16.8 16.6 16.4 16.2 16.0 15.8 15.6 15.4 15.2 15.0 14.8 14.6 14.4 14.2 14.0 13.8 13.6 13.4 13.2 13.0 12.8 12.6 12.4 12.2 12.0 11.8 11.6 11.4 11.2 11.0 10.8 10.6 10.4 10.2 10.0 9.8 9.6 9.4 9.2 9.0 8.8 8.6 8.4 8.2 8.0 7.8 7.6 7.4 7.2 7.0 6.8 6.6 6.4 6.2 6.0 5.8 5.6 5.4 5.2 5.0 4.8 4.6 4.4 4.2 4.0 3.8 3.6 3.4 3.2 3.0 2.8 2.6 2.4 2.2 2.0 1.8 1.6 1.4 1.2 1.0 0.8 0.6 0.4 0.2 0.0