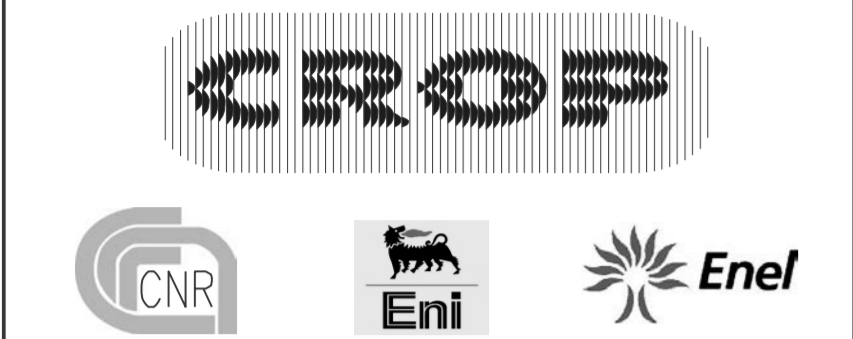


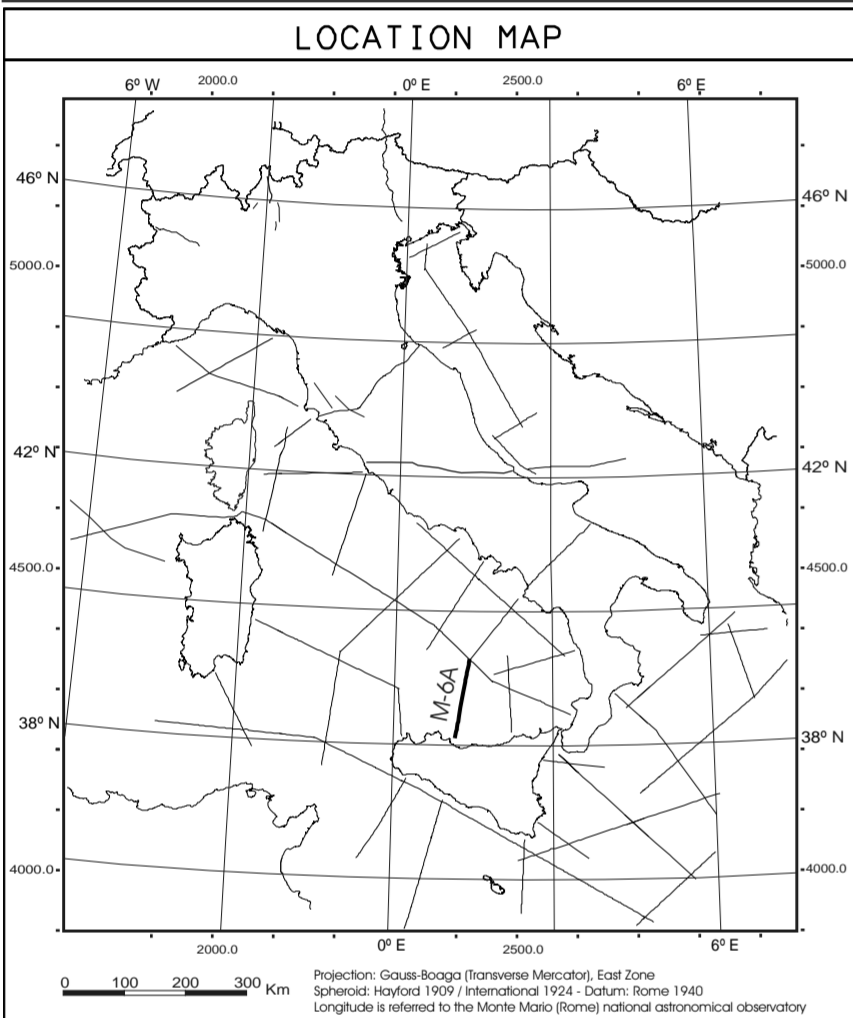
Publication sponsored by
SERVIZIO GEOLOGICO D'ITALIA



CROP ATLAS

SEISMIC REFLECTION PROFILES
OF THE ITALIAN CRUST

LINE : M-6A

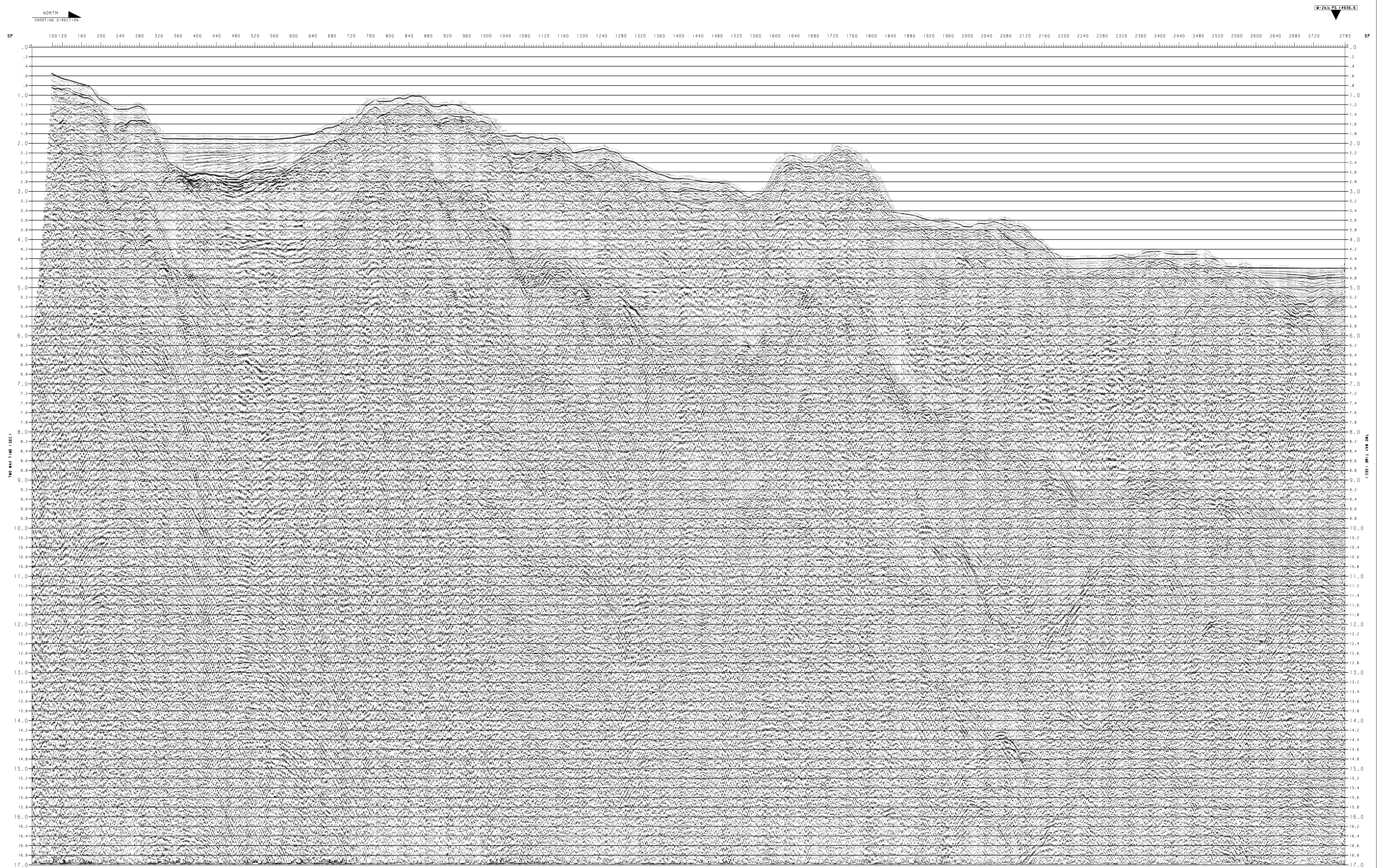


SCALES:
HORIZONTAL 1: 200,000
VERTICAL 2.5 CM - 1 SEC

DATUM PLANE : SEA LEVEL

RECORDING DATA	PROCESSING SEQUENCE
<p>RECORDING DATE: 1991</p> <p>RECORDING PARAMETERS</p> <p>CONTRACTOR: G. S. S. VESSEL: OGS EXPLORA SYSTEM ON 580 EMV RECORD LENGTH: 17000 M FILTER 5 Hz SAMPLING INTERVAL: 20 MS COV: 97.4% S/N: 10.0 DB COVER: 45 FOLD</p> <p>SOURCE</p> <p>ENERGY SOURCE: AIRGUN AVG. SOURCE DEPTH: 50 M S/N: 10.0 DB COVER: 45 FOLD</p> <p>CABLE</p> <p>SINGLE STREAMER: 4500 M N. OF GROUPS: 180 MICROPHONES FOR GROUP: 32 GROUP INTERVAL: 125 M AVE. CABLE DEPTH: 10 M</p> <p>BOAT DIAGRAM</p> <p>LEGEND</p> <p>INTERSECTION</p> <p>CONVENTIONS</p> <p>RECORDING: COMPRESSION NEG. NUMBER POSITIVE COMPRESSION PULSE THROUGH DISPLAY</p> <p>PLAYBACK</p> <p>1 TRACES EVERY 4 IS PLOTTED PRESENTATION: VA RMS TRACE EQUALIZATION</p>	<p>PROCESSING DATE: 1991</p> <p>REFORMAT</p> <p>SEG TO XSS (FLOATING POINT)</p> <p>RESAMPLING</p> <p>TIME SAMPLING TO 8 MS</p> <p>GEOMETRY UPDATE</p> <p>TRACE SUM</p> <p>SUM OF TWO ADJACENT TRACES WITH APPLICATION OF DIFFERENTIAL WND</p> <p>APPLY 110DB SYNTHETIC GAIN</p> <p>USING THE FOLLOWING SYNTHETIC GAIN FUNCTION: gain DB: 1.00 X T + 1.5428 LOG(10) T</p> <p>DECONVOLUTION</p> <p>TYPE: PREDICTIVE MIN. PHASE INV. FILTER OF 31-300 MS</p> <p>MULTIPLE ATTENUATION</p> <p>APPLICATION OF REGIAN FILTER TO CDP GATHERS CORRECTED FOR MULTIPLE VELOCITIES</p> <p>ARRAY STIMULATION</p> <p>TIME VARYING LATERAL MIX OF FIVE TR. APPLIED IN THE COMMON SHOT DOMAIN</p> <p>VELOCITY ANALYSIS</p> <p>USING CONTINUOUS HISTOGRAM VELOCITY FUNCTION STACKS AND GATHERS AT AN AVERAGE INTERVAL OF 2.5 MS VELOCITIES CHECKED USING COMMON DISTANCE GATHERS AT THE POINT OF THE VELOCITY FUNCTION</p> <p>WMO STACK 4500X</p> <p>CDP ORDERED DATA AND CORRECTED WITH FINAL VELOCITIES</p> <p>WMO FILTER</p> <p>WMO FILTER OF 4 NEAR TO FAR TRACE LINEAR DIFFERENTIAL WEIGHTING</p> <p>X FILTER</p> <p>APPLICATION OF X FILTER TO ATTENUATING DIPS GREATER THAN 80% TO REDUCE STEEPLY DIPPING NOISE</p> <p>TRACES WXY</p> <p>APPLICATION OF TIME VARYING 3 TRACE DIFFING NOISE</p> <p>TIME VARIANT FILTER</p> <p>200 MS ZERO PHASE BANDPASS FILTER AUTOMATICALLY APPLIED TO FOLLOW THE WATER BOTTOM</p> <p>Line: 580 Time: 0.00 - 17.00 N. OF GROUPS: 180 Microphones for group: 32 Group interval: 125 M Avg. cable depth: 10 M Coverage: 45 FOLD S/N: 10.0 DB</p>

Data processed by: OGS
Cgm file generated by: ENI-AGIP DIVISION



W-240-PS-1936-B