



LINE BC-46

S.P. 07 to S.P. 49

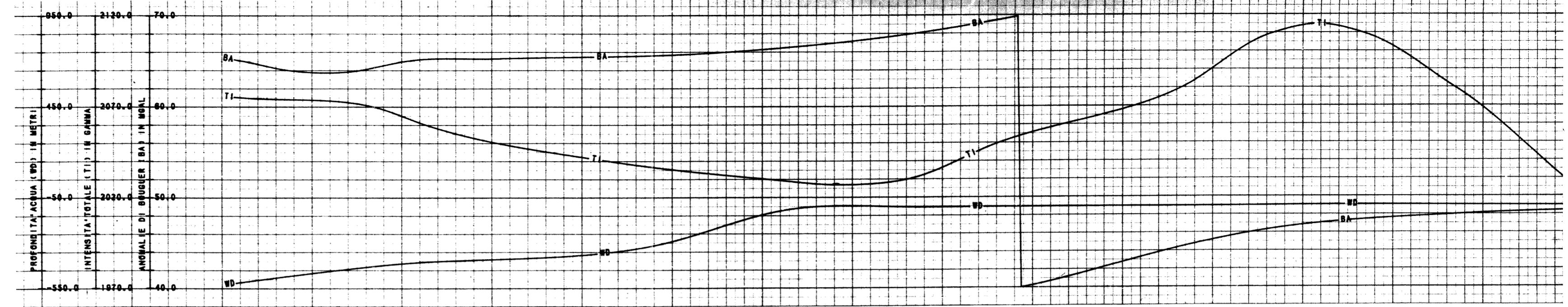
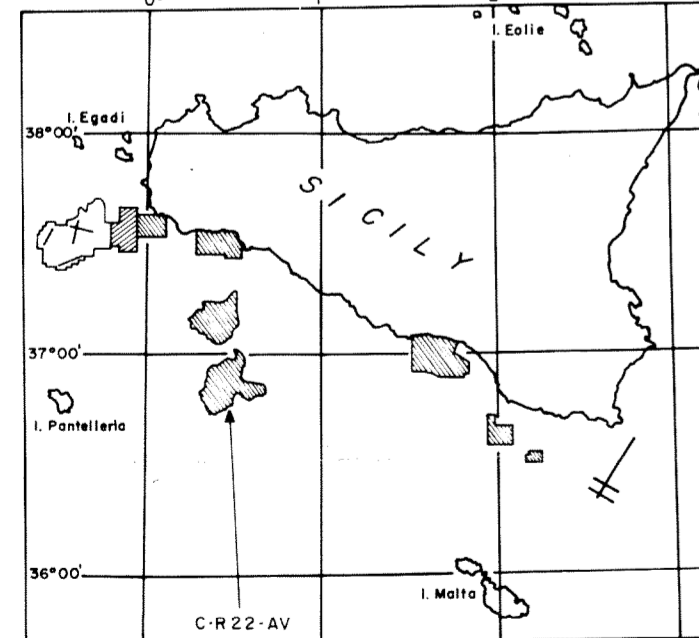
AGIP PROSPECT C-R22-AV WESTERN GEOPHYSICAL  
 AREA: SICILIAN CHANNEL

| RECORDING DATA   | PROCESSING SEQUENCE  |
|--|--|
| PARTY No 63<br>ENERGY SOURCE MAXIPULSE<br>FILTER: HI/OUT HI/ALIAS 62<br>CABLE: 48 GROUPS - 2400 m<br>GEOPHONES: 32 CRYSTAL ELEMENT<br>TAPERED ARRAY<br>OFFSET 238 m<br>AMPLIFIER DDS 888<br>CHARGE SIZE 8 Oz. N.C.N.<br>GUN DEPTH 9.2 mts - 10.7 mts<br>AVG. CABLE DEPTH 12.50<br>DATE SHOT OCTOBER 1973 | 1) EDIT (SUM I POP)<br>2) DE-BUBBLE<br>3) DECONVOLUTION<br>4) 2400% STK<br>5) TV.FILTER<br>6) PLAYBACK<br>VELOCITIES INTERPOLATED BETWEEN<br>POINTS OF APPLICATION<br>CORRECTION TO SEA LEVEL:<br>NOT APPLIED<br>STK REEL No 77874 |

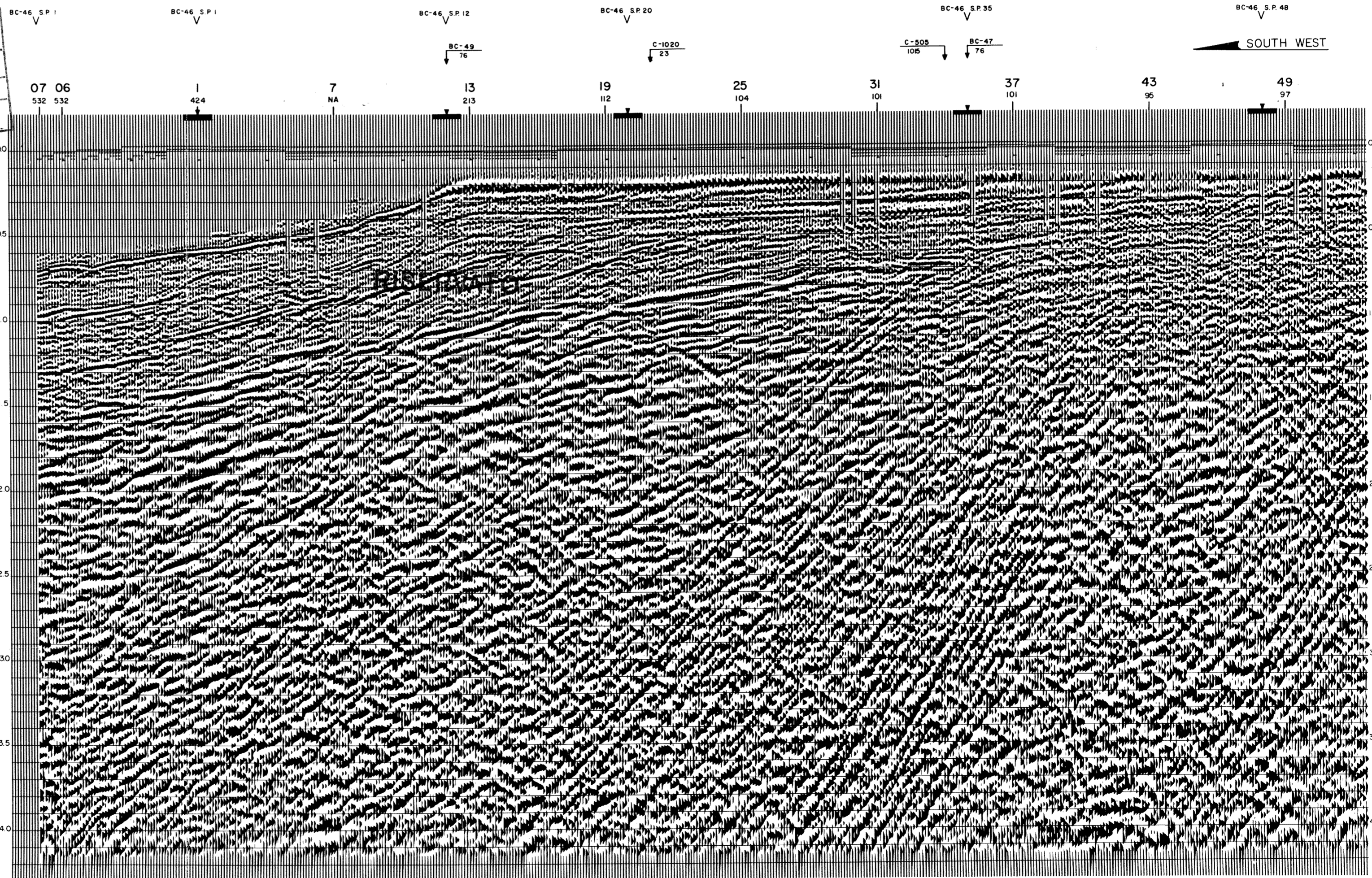
PROCESSING INFORMATION

| DECON BEFORE STACK  | TIME VARIANT FILTER  |
|---|--|
| TIME VARIANT MIN. PHASE INV. FILTER<br>AUTO CORR. INT.: 2 ZONES<br>SEARCH ZONE: 32 ms. to 200 ms.<br>OPERATOR LENGTH: SEARCH ZONE<br>TIME ZONE: 0-4.0 SEC.<br>ITERATIONS: 1 | L.C. H.C.<br>TIME ZONE Hz dB/OCT Hz dB/OCT<br>VARIABLE 12 18 50 48<br>" 10 18 45 49<br>" 10 18 40 48<br>" 8 12 35 48<br>" 7 6 30 36<br>" 5 6 20 24 |

| PLAYBACK DATA   | LEGEND   |
|---|--|
| SAMPLE RATE 2 ms<br>AMPLITUDE ATT = 2 B = 10<br>Scale { 1 Sec 9.5 cm.<br>1 Km 6.3 cm.<br>REFORMAT REEL 76519<br>DATE NOVEMBER, 1973 | INTERSECTION: LINE S.P.<br>VEL. DERIVED AT: LINE S.P.<br>VELOCITY ANALYSIS: V S.P.<br>SHOT POINT No.: 100<br>WATER DEPTH IN METRES: 10 |



SEZIONE IDROCARBURI  
 12 GIU. 1976  
 Sez. Posiz.



SOUTH WEST