

PER-8-83
S.P. 85 TO S.P. 299



SP	104.00
0.00	3500
0.10	3500
0.20	3500
0.30	3500
0.40	3500
0.50	3500
0.60	3500
0.70	3500
0.80	3500
0.90	3500
1.00	3500

SP	137.00
0.00	3500
0.10	3500
0.20	3500
0.30	3500
0.40	3500
0.50	3500
0.60	3500
0.70	3500
0.80	3500
0.90	3500
1.00	3500

SP	157.00
0.00	3500
0.10	3500
0.20	3500
0.30	3500
0.40	3500
0.50	3500
0.60	3500
0.70	3500
0.80	3500
0.90	3500
1.00	3500

SP	190.50
0.00	3500
0.10	3500
0.20	3500
0.30	3500
0.40	3500
0.50	3500
0.60	3500
0.70	3500
0.80	3500
0.90	3500
1.00	3500

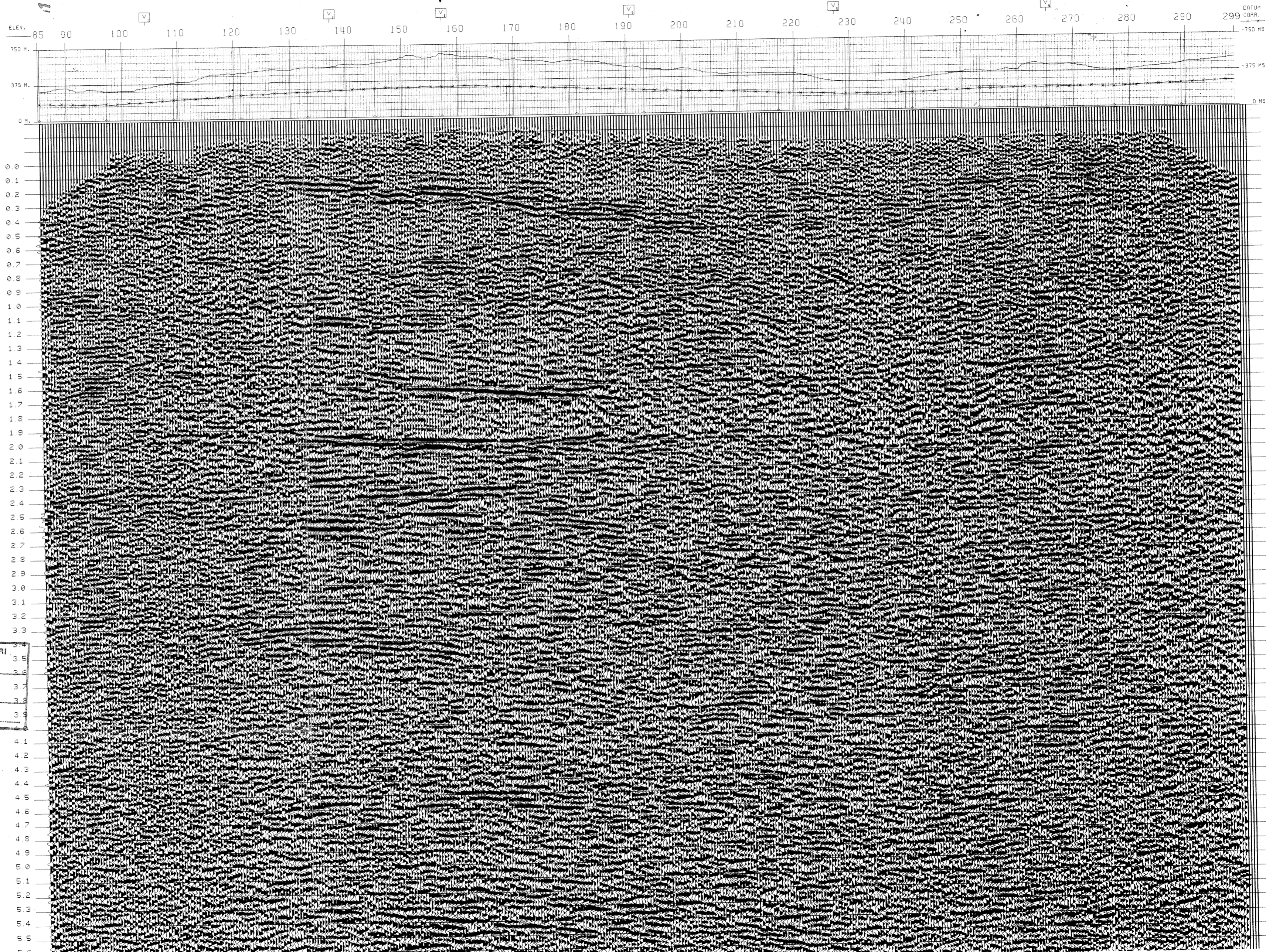
SP	227.00
0.00	3500
0.10	3500
0.20	3500
0.30	3500
0.40	3500
0.50	3500
0.60	3500
0.70	3500
0.80	3500
0.90	3500
1.00	3500

SP	255.00
0.00	3500
0.10	3500
0.20	3500
0.30	3500
0.40	3500
0.50	3500
0.60	3500
0.70	3500
0.80	3500
0.90	3500
1.00	3500

PER-4-82
S.P. 300

DBS 750% TVF

Handwritten signature



SNIA WESTERN
RICERCHE GEOFISICHE

AREA ITALIA
PERMESSO PERUGIA

DATE SHOT: MAY/JUNE 1983
DATE PROCESSED: JUNE/JULY 1983

RECORDING DATA	PROCESSING SEQUENCE
PART NUMBER: SIA-1002	EDIT: GEO. AMPL. SR 4MS LEN. 6SEC.
RECORDING FILTER: 8	EDIT REC. N. 105400
RECORDING FILTER (Hz): 12/2100	NOISE BLOCK & PREDECON FILTER
RECORD LENGTH: 3000	PREPROCESSOR/DECON
SAMPLE RATE (Hz): 4	DECON TYPE: MINIMUM PHASE INVERSE FILTER
SUBSURFACE COVERAGE: 750 PCT	MIN. PHASE DIST. 50MS - MAX. PHASE DIST.: 100MS
CHIRP INTERVAL (METERS): 80	NO. OF WINDOWS
NUMBER OF GROUPS: 80	STOP AUTOCORRELATION 8.0 SEC.
WEATHERING VELOCITY: 500M/S	DECON REEL N. 102600
STATIC CORRECTION VELOCITY: 4000 M/S	VELOCITY ANALYSIS
DATUM PLANE (ABOVE SEA LEVEL): 0	NO. STAGES, MUTE APPLICATION
	STRETCH DEPENDENT MUTE (WOPF)
	SURFACE CONSISTENT RESID. STATICS
	MAXIMUM SHIFT: 10 msec.
	CONVERT TO STAGE 750 PCT.
	REEL N. 106330
	DBS GAIN
	MIGRATION HIGH PASS
	LINE VARIANT FILTER
	VERTICAL & SPATIAL INTERPOLATION
	1000 10-45 Hz
	2000 10-45 Hz
	4000 8-30 Hz
	LEGEND
	HORIZONTAL SCALE: 5 TRACES
	VERTICAL SCALE: 1 CM=50

SEISMOGRAM ARRAY

GEOPHONE TYPE: SENSOR-1040

GEOPHONE FREQUENCY: 11-Hz

GEOPHONE/ARRAY: 24

ENERGY SOURCE: ESPLOSIVO

SHOT HOLES: 1.5

AVERAGE SHOT DEPTH: 20 M

