

997-11-50

AGIP

OFFSHORE ITALIA  
ZONA F

SW 500 NE 999  
LINEA F.76-39

1 km

COMPAGNIE GENERALE  
DES GEOPHYSIQUES

DIGITAL PROCESSING P5

TIME ORIGIN: Source and cable depth

STACK 4800%

Boat motion

630

Date: JUNE 9, 76

Checked

PROCESSING

SAMPLING RATE 4ms

- 1. AMPLITUDE RECOVERY
- 2. WAPCO stabilization by vaporchoc signal
- 3. MUTING
- 4. DECONVOLUTION 240 ms  
Window: 500 - 2300 ms J Below  
1900 - 3600 ms Isea bottom
- 5. VELOCITY ANALYSIS (VA)
- 6. NMO CORRECTIONS  
(LINEAR INTERPOLATION  
BETWEEN VELOCITY FUNCTIONS)

- 7. STACK 4800%
- 8. TIME VARIANT FILTER (Origin sea bottom)
- 9. TRACE EQUALIZATION
- 10. ANALOG DISPLAY

FIELD RECORDING

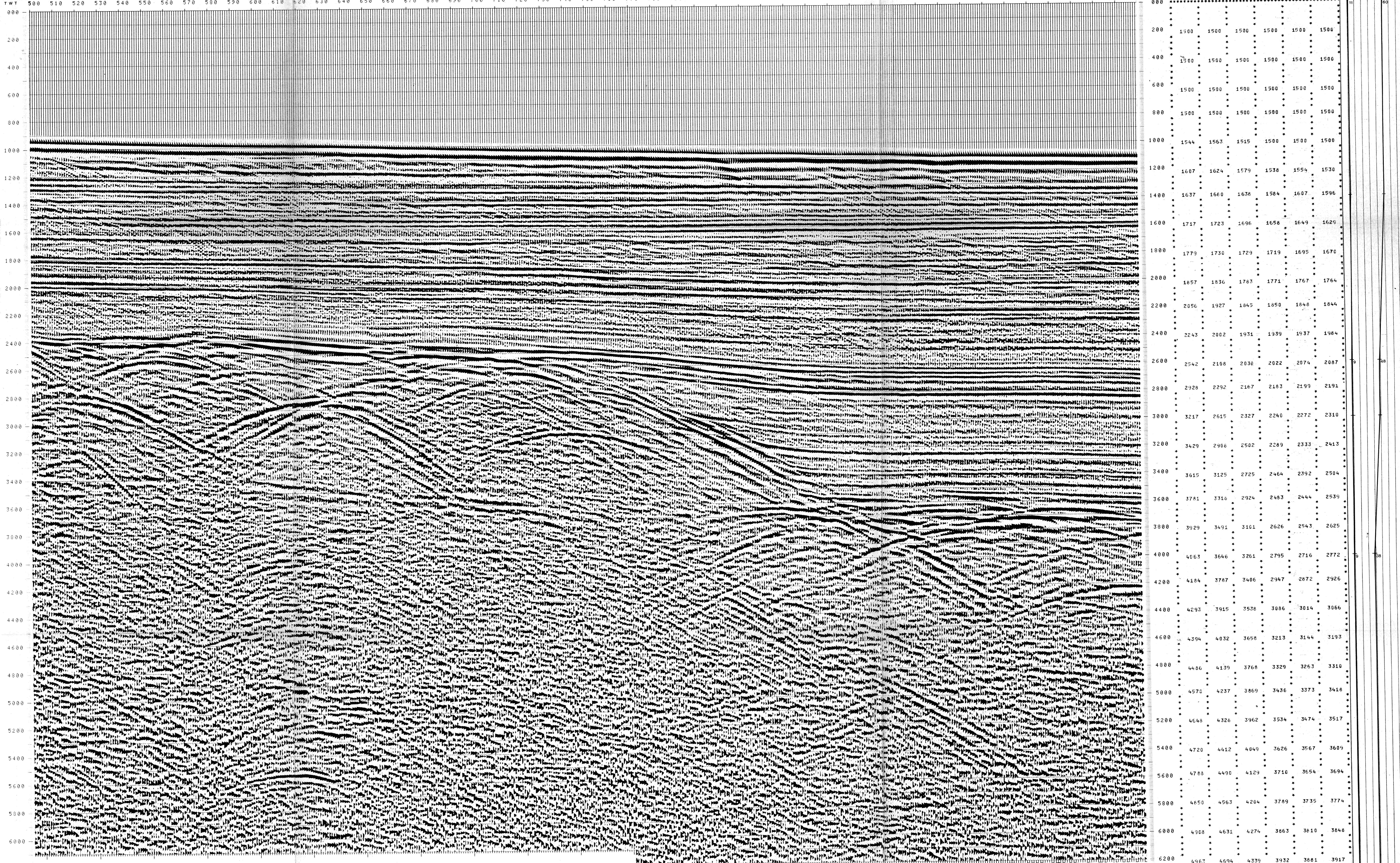
SAMPLING RATE 4ms

Ship: GLORITA TIDE Shooting date: JAN / 1976  
 Field recorder: SN 338 filter: V8 125  
 Floating point: sampling 4 ms  
 Streamer: 2400 m (depth 19 m)  
 Groups: 48 (group interval 50 m)  
 Geophones type: HC201 n° 48 / group  
 48Fold coverage  
 Energy source: VAPORCHOC (depth: 148)  
 SP: 191 Streamer: 148  
 310m SHORAN positioning

F76-14  
908

F76-12  
8686

TWT 500 510 520 530 540 550 560 570 580 590 600 610 620 630 640 650 660 670 680 690 700 710 720 730 740 750 760 770 780 790 800 810 820 830 840 850 860 870 880 890 900 910 920 930 940 950 960 970 980 990 999



	FROM SP*	FROM SP*	FROM SP*	FROM SP*	FROM SP*	FROM SP*
	489*	613*	717*	835*	955*	1073*
	TO SP*	TO SP*	TO SP*	TO SP*	TO SP*	TO SP*
	489*	613*	717*	835*	955*	1073*
	AV. VEL. IN M/S*	AV. VEL. IN M/S*	AV. VEL. IN M/S*	AV. VEL. IN M/S*	AV. VEL. IN M/S*	AV. VEL. IN M/S*
000						
200	1500	1500	1500	1500	1500	1500
400	1500	1500	1500	1500	1500	1500
600	1500	1500	1500	1500	1500	1500
800	1500	1500	1500	1500	1500	1500
1000	1544	1563	1515	1500	1500	1500
1200	1607	1624	1579	1538	1554	1530
1400	1637	1660	1638	1584	1607	1596
1600	1717	1723	1696	1656	1649	1629
1800	1779	1730	1729	1719	1695	1670
2000	1857	1836	1783	1771	1767	1764
2200	2056	1927	1845	1850	1846	1844
2400	2243	2002	1931	1939	1937	1984
2600	2542	2108	2030	2022	2074	2087
2800	2928	2292	2167	2183	2199	2191
3000	3217	2615	2327	2240	2272	2310
3200	3429	2906	2502	2389	2333	2413
3400	3615	3125	2725	2464	2392	2504
3600	3781	3316	2924	2463	2444	2539
3800	3929	3491	3101	2626	2543	2625
4000	4063	3646	3261	2795	2716	2772
4200	4184	3787	3406	2947	2872	2926
4400	4293	3915	3538	3086	3014	3066
4600	4394	4032	3658	3213	3144	3193
4800	4486	4139	3768	3329	3263	3310
5000	4570	4237	3869	3436	3373	3418
5200	4648	4326	3962	3534	3474	3517
5400	4720	4412	4049	3626	3567	3609
5600	4788	4490	4129	3710	3654	3694
5800	4850	4563	4204	3789	3735	3774
6000	4908	4631	4274	3863	3810	3848
6200	4967	4694	4339	3932	3881	3917

VARIABLE FILTER  
 997-11-50  
 Frequency in Hz  
 0 2 4 6 8 10