

997-11-50 **AGIP**

OFFSHORE ITALIA
ZONA F

S W 1240 LINEA F.76-27 N E 1879

1 km

COMPAGNIE GENERALE DE GEOPHYSIQUE

DIGITAL PROCESSING P5

TIMEORIGIN: Source and cable depth

STACK 4800%

Boat motion

684 Date: JUNE 21 '76 Checked: *bw*

PROCESSING SAMPLING RATE 4ms

- AMPLITUDE RECOVERY
- WAPCO (stabilization by vaporchoc signal)
- MUTING
- SECULARIZATION 240 ms
WIGWAG 500 - 2300 ms J below
1900 - 3600 ms Tilt buffer
- VELOCITY ANALYSIS (NAI)
- NMO CORRECTIONS
LINEAR INTERPOLATION
BETWEEN VELOCITY FUNCTIONS 1
- STACK 4800%
- TIME VARIANT FILTER (Origin sea bottom)
- TRACE EQUALIZATION
- ANALOG DISPLAY

FIELD RECORDING SAMPLING RATE 4ms

Ship: GLORITA TIDE Shooting date: JAN 1976

Field recorder: SN 338 Filter: V8-125

Floating point: sampling 4 ms

Streamer: 2400 m (depth 10 m)

groups: 48 (group interval 50 m)

Geophones type: HC 201 n° 48 / group

48 fold coverage

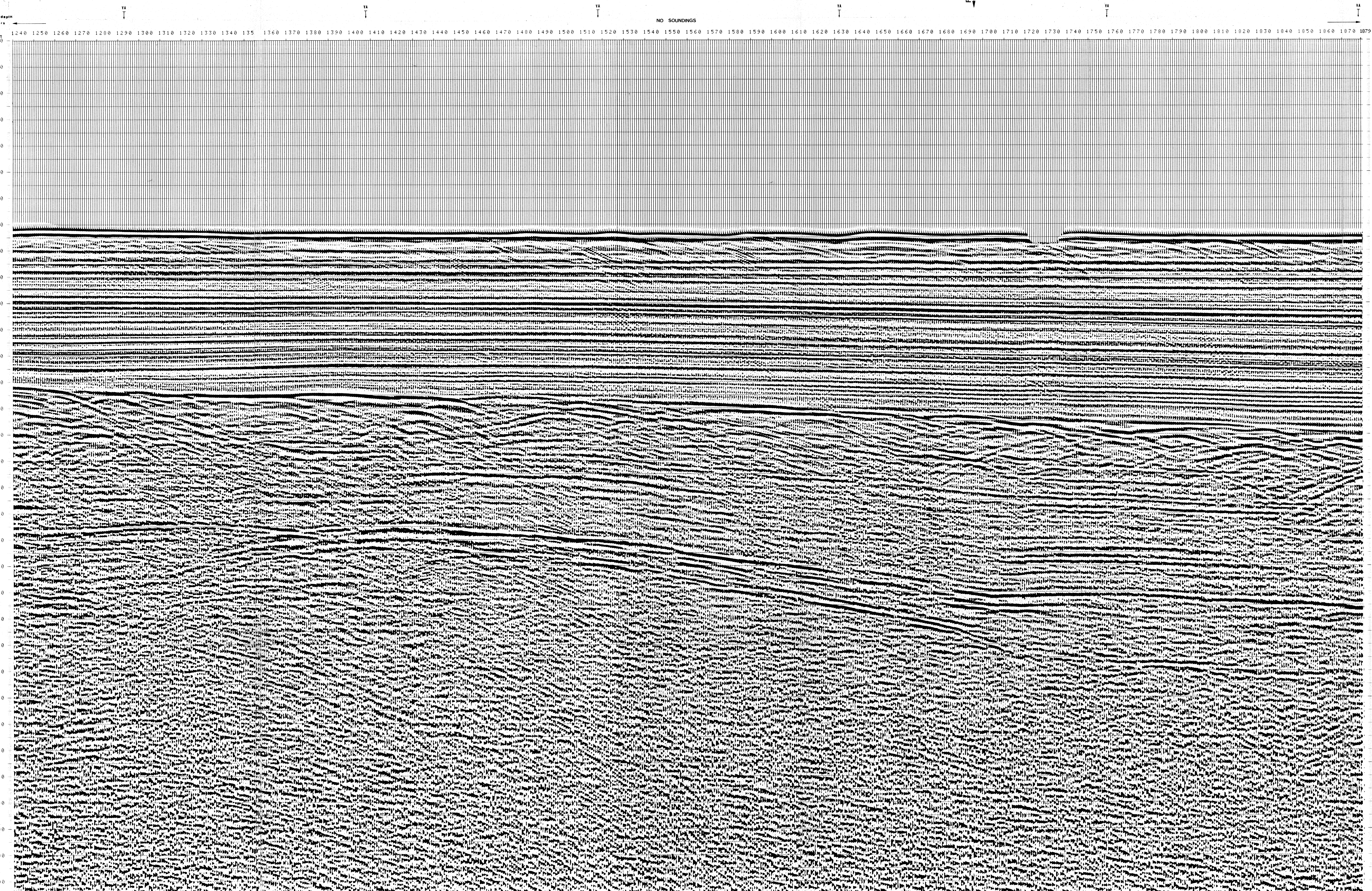
Energy source: VAPORCHOC (Depth: m)

SP 1st Streamer 1:48

310m SHORAN positioning

00151

F.76.08
1884



WT	1774	1792	1807	1817	1831	1856	1877	1897
000								
200	1500	1500	1500	1500	1500	1500	1500	1500
400	1500	1500	1500	1500	1500	1500	1500	1500
600	1500	1500	1500	1500	1500	1500	1500	1500
800	1500	1500	1500	1500	1500	1500	1500	1500
1000	1500	1500	1500	1500	1500	1500	1500	1500
1200	1500	1500	1500	1500	1500	1500	1500	1500
1400	1500	1500	1500	1500	1500	1500	1500	1500
1600	1518	1528	1507	1529	1521	1503	1521	1517
1800	1550	1558	1543	1560	1561	1560	1546	1541
2000	1537	1601	1599	1607	1604	1612	1592	1563
2200	1600	1664	1663	1665	1694	1663	1653	1616
2400	1721	1744	1719	1718	1779	1722	1724	1709
2600	1811	1827	1789	1777	1809	1787	1787	1739
2800	1957	1917	1884	1928	1919	1884	1870	1879
3000	2119	2013	1992	2024	2040	1987	1980	1949
3200	2191	2116	2097	2113	2202	2062	2123	2085
3400	2292	2224	2219	2193	2360	2128	2233	2151
3600	2387	2403	2328	2278	2499	2198	2294	2267
3800	2711	2588	2425	2339	2650	2268	2349	2282
4000	3001	2757	2569	2579	2786	2362	2518	2364
4200	3144	2911	2733	2742	2909	2535	2670	2462
4400	3274	3052	2881	2890	3035	2692	2811	2637
4600	3393	3188	3017	3025	3164	2836	2950	2783
4800	3581	3297	3142	3193	3282	2968	3077	2917
5000	3601	3406	3255	3263	3391	3009	3194	3040
5200	3693	3505	3361	3368	3491	3201	3302	3154
5400	3779	3598	3459	3466	3584	3305	3402	3259
5600	3868	3683	3549	3556	3671	3401	3494	3357
5800	3932	3763	3634	3641	3751	3491	3581	3448
6000	4001	3838	3713	3719	3826	3574	3661	3533
6200	4065	3908	3786	3793	3896	3652	3737	3613
6400	4126	3973	3856	3862	3962	3726	3806	3688