

997-11-69

AGIP

OFFSHORE ITALIA  
ZONA F

NW 1072 LINEA F.76-127 486 SE

1 km

COMPAGNIE GENERALE DE GÉOLOGIE

DIGITAL PROCESSING P5

TIME ORIGIN: Source and cable depth

STACK 4800%

Boat motion

514 Date: MAY 3 '76 Checked: R/G

PROCESSING  
SAMPLING RATE 4ms

- AMPLITUDE RECOVERY
- WAFD (stabilization by aperiodic signal)
- MUTING
- DECONVOLUTION 240 ms  
WINDS: 500 2300 ms / 1800 3600 ms / sea bottom
- VELOCITY ANALYSIS (VA)
- WIND CORRECTIONS  
LINEAR INTERPOLATION BETWEEN VELOCITY FUNCTIONS
- STACK 4800%
- TIME VARIANT FILTER (origin sea bottom)
- TRACE EQUALIZATION
- ANALOG DISPLAY

FIELD RECORDING  
SAMPLING RATE 4ms

Ship: POLAR BJORN Shooting date: FEB/1976

Field recorder: SN3388 filter: 10B-125

floating point sampling: 4 ms

Streamer: 2400 m (depth: 15 m)

groups: 48 (group interval: 50 m)

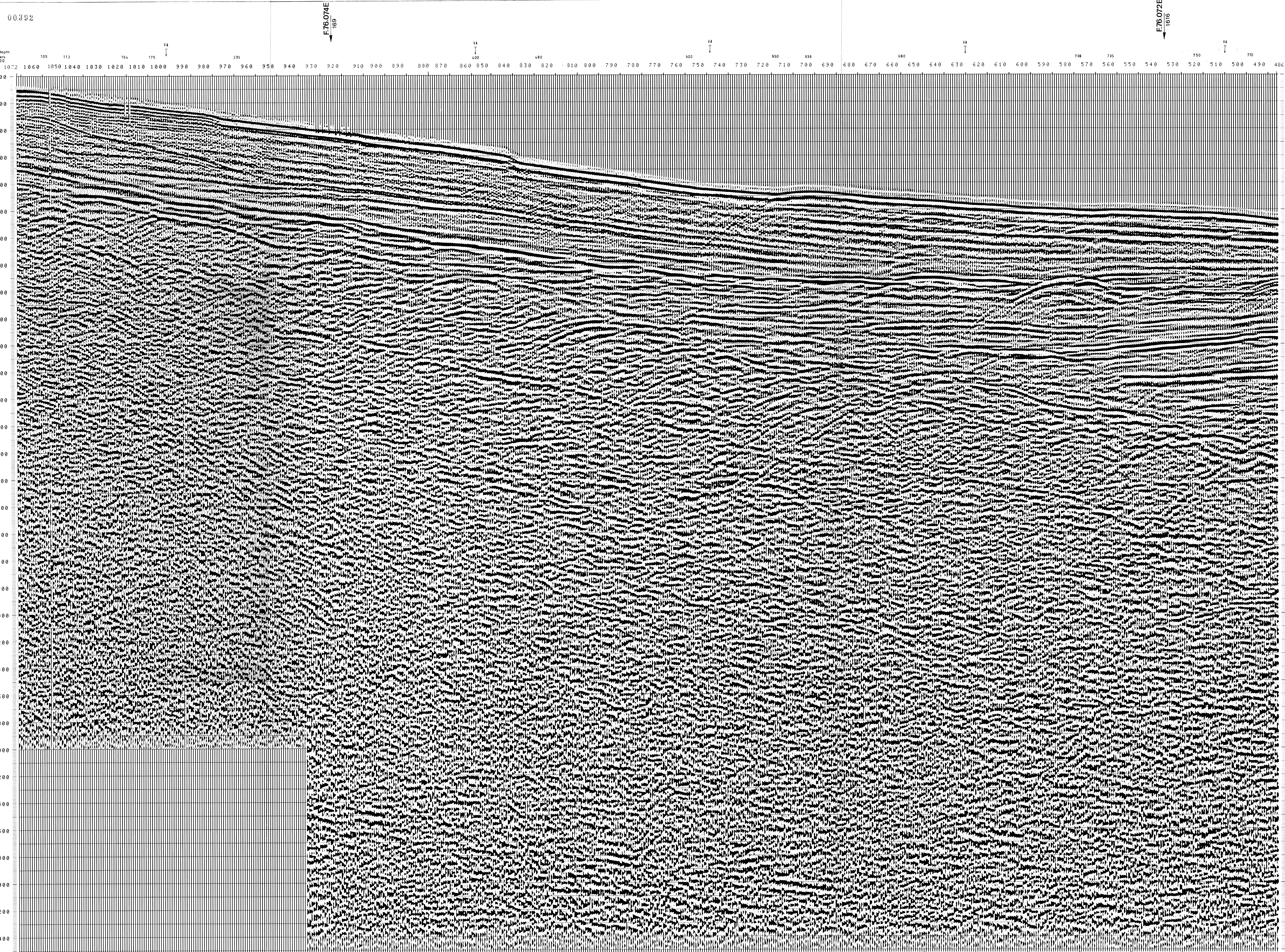
Geophones type: HC 201 n: 48 / group

48Fold coverage

Energy source: VAPORCHOC (Depth 5 m)

Streamers: 1148

320m MOTOROLA positioning



SEISMIC DATA TABLE

DEPTH (m) | 100 | 200 | 300 | 400 | 500 | 600 | 700 | 800 | 900 | 1000 | 1100 | 1200 | 1300 | 1400 | 1500 | 1600 | 1700 | 1800 | 1900 | 2000 | 2100 | 2200 | 2300 | 2400 | 2500 | 2600 | 2700 | 2800 | 2900 | 3000 | 3100 | 3200 | 3300 | 3400 | 3500 | 3600 | 3700 | 3800 | 3900 | 4000 | 4100 | 4200 | 4300 | 4400 | 4500 | 4600 | 4700 | 4800 | 4900 | 5000 | 5100 | 5200 | 5300 | 5400 | 5500 | 5600 | 5700 | 5800 | 5900 | 6000 | 6100 | 6200 | 6300 | 6400

VA | 100 | 200 | 300 | 400 | 500 | 600 | 700 | 800 | 900 | 1000 | 1100 | 1200 | 1300 | 1400 | 1500 | 1600 | 1700 | 1800 | 1900 | 2000 | 2100 | 2200 | 2300 | 2400 | 2500 | 2600 | 2700 | 2800 | 2900 | 3000 | 3100 | 3200 | 3300 | 3400 | 3500 | 3600 | 3700 | 3800 | 3900 | 4000 | 4100 | 4200 | 4300 | 4400 | 4500 | 4600 | 4700 | 4800 | 4900 | 5000 | 5100 | 5200 | 5300 | 5400 | 5500 | 5600 | 5700 | 5800 | 5900 | 6000 | 6100 | 6200 | 6300 | 6400

Frequency in Hz

VARIABLE FILTER

997-11-69