

997-11-50

AGIP

OFFSHORE ITALIA
ZONA F

SW 792 NE 381
LINEA F-76.01

1 km

COMPAGNIE GENERALE
DE GEOPHYSIQUE

DIGITAL PROCESSING P5
TIME ORIGIN: Source and cable depth
STACK 4800%
Boat motion

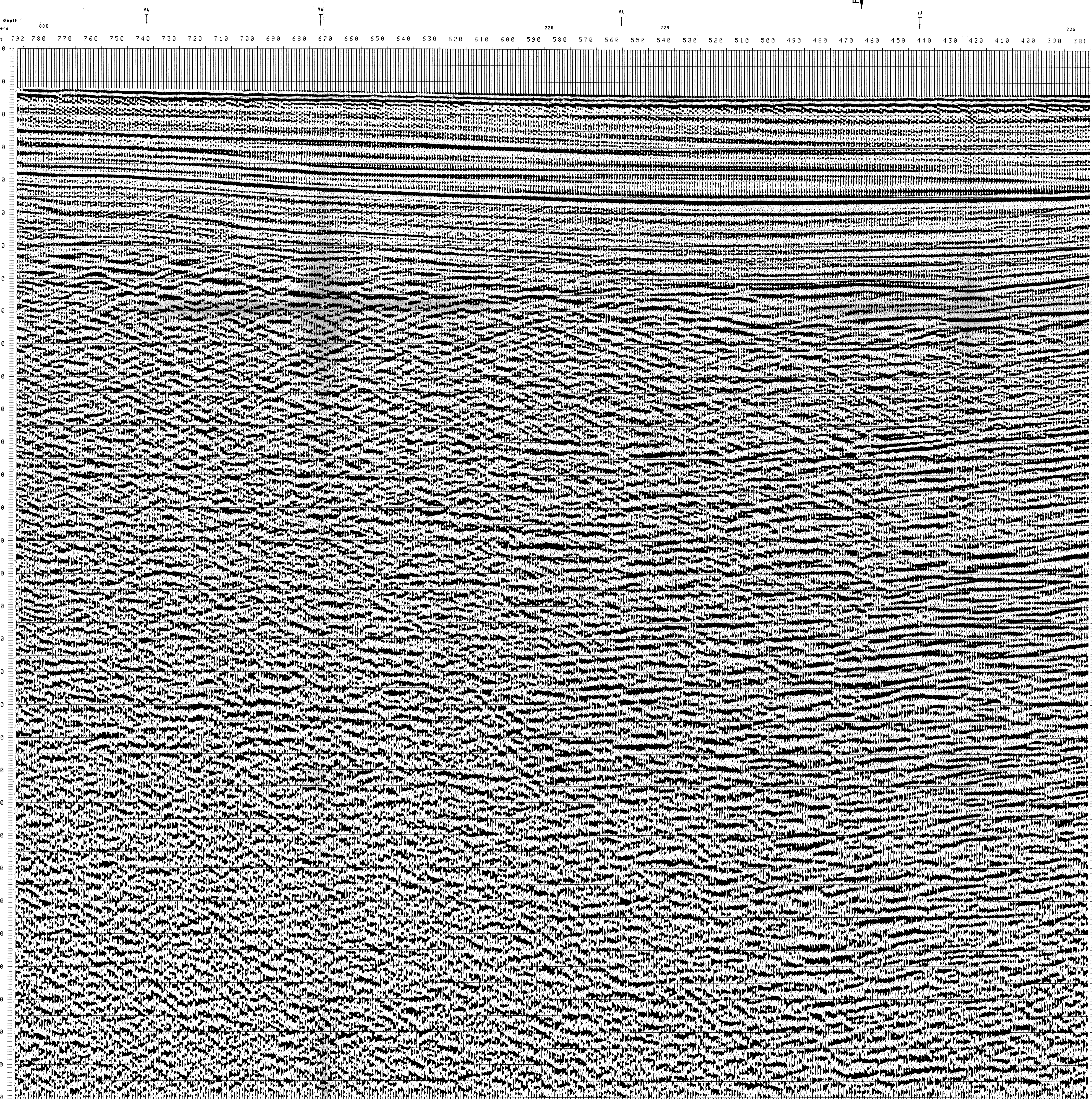
1 AMPLITUDE RECOVERY
2 WAPCO stabilization by vaporchoc signal
3 MUTING
4 DECONVOLUTION 240 ms
5 VELOCITY ANALYSIS (VA)
6 NMO CORRECTIONS

7 STACK 4800%
8 TIME VARIANT FILTER (origin sea bottom)
9 TRACE EQUALIZATION
10 ANALOG DISPLAY

FIELD RECORDING
SAMPLING RATE 4 ms
Ship GLORITA TIDE Shooting date FEB/1976
Field recorder SN 338 filter VB-125
Floating point sampling 4 ms
Streamer 2400 m (depth 20 m)
groups 48 (group interval 50 m)
Geophones type HC 201 n° 48 / group
48 fold coverage
Energy source VAPORCHOC (depth 6 m)
SP Tr1 Streamer Tr48
310m SHORAN positioning

557 Date: MAY 17 '76 Checked R6

00002



F76.004
5667

TWT	VARIABLE FILTER				
	741	755	759	765	771
	TO SP	TC SP	TC SP	TC SP	TC SP
	702	675	559	445	327
	AV.VEL.	AV.VEL.	AV.VEL.	AV.VEL.	AV.VEL.
	IN M/S	IN M/S	IN M/S	IN M/S	IN M/S
000					
200	1500	1500	1500	1500	1500
400	1522	1552	1506	1630	1578
600	1600	1560	1603	1761	1657
800	1735	1813	1827	1854	1870
1000	2158	2070	2051	2050	2015
1200	2389	2266	2225	2240	2223
1400	2710	2556	2452	2494	2528
1600	3182	3128	2914	2838	2984
1800	3562	3514	3476	3217	3445
2000	3866	3823	3752	3556	3761
2200	4114	4075	4011	3832	4019
2400	4321	4285	4227	4063	4234
2600	4497	4463	4409	4258	4416
2800	4647	4616	4566	4426	4672
3000	4777	4748	4701	4570	4707
3200	4891	4864	4820	4697	4825
3400	4991	4966	4924	4809	4930
3600	5081	5057	5018	4908	5022
3800	5161	5138	5101	4997	5105
4000	5233	5211	5176	5078	5180
4200	5298	5277	5244	5150	5248
4400	5357	5337	5305	5216	5309
4600	5411	5392	5361	5276	5365
4800	5460	5442	5413	5331	5417
5000	5506	5489	5460	5382	5464
5200	5548	5531	5504	5429	5508
5400	5587	5571	5545	5472	5548
5600	5623	5608	5583	5512	5586
5800	5657	5642	5619	5550	5621
6000	5688	5674	5650	5585	5653
6200	5718	5704	5681	5618	5684
6400	5745	5732	5710	5648	5712