

997-11-50

AGIP

OFFSHORE ITALIA
ZONA F

SW 2640 LINEA F-75-57 NE 1980

1 km

COMPAGNIE GENERALE DE GEOPHYSIQUE

DIGITAL PROCESSING P5

TIME ORIGIN: Source and cable depth

STACK 4800 X

Boat motion

448 Date: APRIL 9 '76 Checked: [initials]

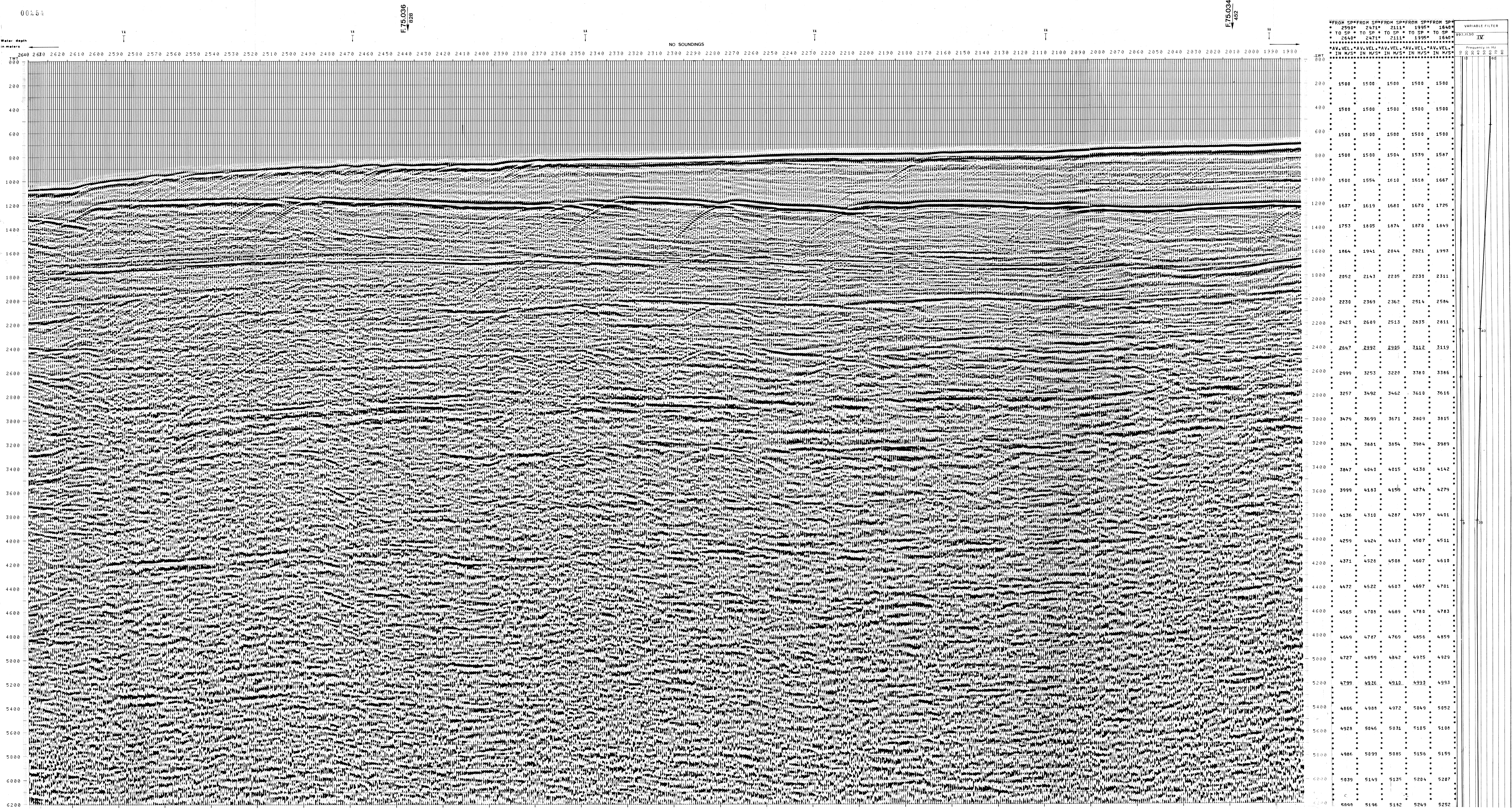
PROCESSING SAMPLING RATE 4ms

- 1 AMPLITUDE RECOVERY
- 2 WAPCO stabilization by approx. signal
- 3 MUTING
- 4 DECONVOLUTION 240 ms (START: 500 - 2300 ms; Below 1900 - 3600 ms; Use button)
- 5 VELOCITY ANALYSIS (VA)
- 6 NME CORRECTIONS (LINEAR INTERPOLATION BETWEEN VELOCITY FUNCTIONS)

FIELD RECORDING SAMPLING RATE 4ms

- 1 STACK 4800 X
- 2 TIME VARIANT FILTER (Origin sea bottom)
- 3 TRACE IDEALIZATION
- 10 ANALOG DISPEY

Ship: GLORITA TIDE Shooting date: DEC 1975
Field recorder: SN 338 filter: V8-125
Floating point: sampling 4 ms
Streamer: 2400 m (depth 19 m)
groups 48 (group interval 50 m)
Geophones type: HC 201 n° 48 / group
48 fold coverage
Energy source: VAPORCHOC (depth 6 m)
SP Tri Streamer Tr 48
310m SHORAN positioning



WT	2590*	2471*	2111*	1995*	1640*
TO SP	TO SP	TO SP	TO SP	TO SP	TO SP
2640*	2471*	2111*	1995*	1640*	
AV. VEL.	AV. VEL.	AV. VEL.	AV. VEL.	AV. VEL.	AV. VEL.
IN M/S*	IN M/S*	IN M/S*	IN M/S*	IN M/S*	IN M/S*
1500	1500	1500	1500	1500	
1500	1500	1500	1500	1500	
1500	1500	1500	1500	1500	
1500	1500	1504	1539	1587	
1500	1554	1610	1618	1667	
1637	1619	1680	1670	1725	
1753	1805	1874	1870	1849	
1864	1941	2044	2021	1993	
2052	2143	2235	2230	2311	
2230	2369	2362	2514	2584	
2425	2689	2513	2835	2811	
2647	2932	2905	3112	3119	
2999	3253	3228	3380	3386	
3257	3492	3462	3610	3616	
3479	3699	3671	3809	3815	
3674	3881	3854	3984	3989	
3847	4040	4015	4138	4142	
3999	4183	4158	4274	4279	
4136	4310	4287	4397	4401	
4259	4424	4403	4507	4511	
4371	4528	4508	4607	4610	
4472	4522	4603	4697	4701	
4565	4705	4689	4780	4783	
4649	4787	4769	4856	4859	
4727	4859	4842	4925	4929	
4799	4926	4910	4993	4993	
4866	4988	4972	5049	5052	
4928	5046	5031	5105	5108	
4986	5099	5085	5156	5159	
5039	5149	5135	5204	5207	
5040	5196	5182	5249	5252	