

OFFSHORE ITALIA
ZONA F

NW
620

LINEA F.75-22

SE
1280

1 km

COMPAGNIE GÉNÉRALES DE GÉOPHYSIQUE

DIGITAL PROCESSING P5

TIME ORIGIN: Source and cable depth

STACK 4800%

Boat motion

525 Date: MAY 6 1976 Checked: R.V.

PROCESSING (SAMPLING RATE 4 Hz)

- 1 AMPLITUDE RECOVERY
- 2 WAFFER STABILIZATION (by VAPORCHOC signal)
- 3 MUTING
- 4 DECONVOLUTION 240 ms
WIRES: 500 2000 ms J Below
1000 2800 ms Top Bottom
- 5 VELOCITY ANALYSIS (VA)
(LINEAR INTERPOLATION BETWEEN VELOCITY FUNCTIONS)
- 6 ANMO CORRECTIONS

FIELD RECORDING (SAMPLING RATE 4 Hz)

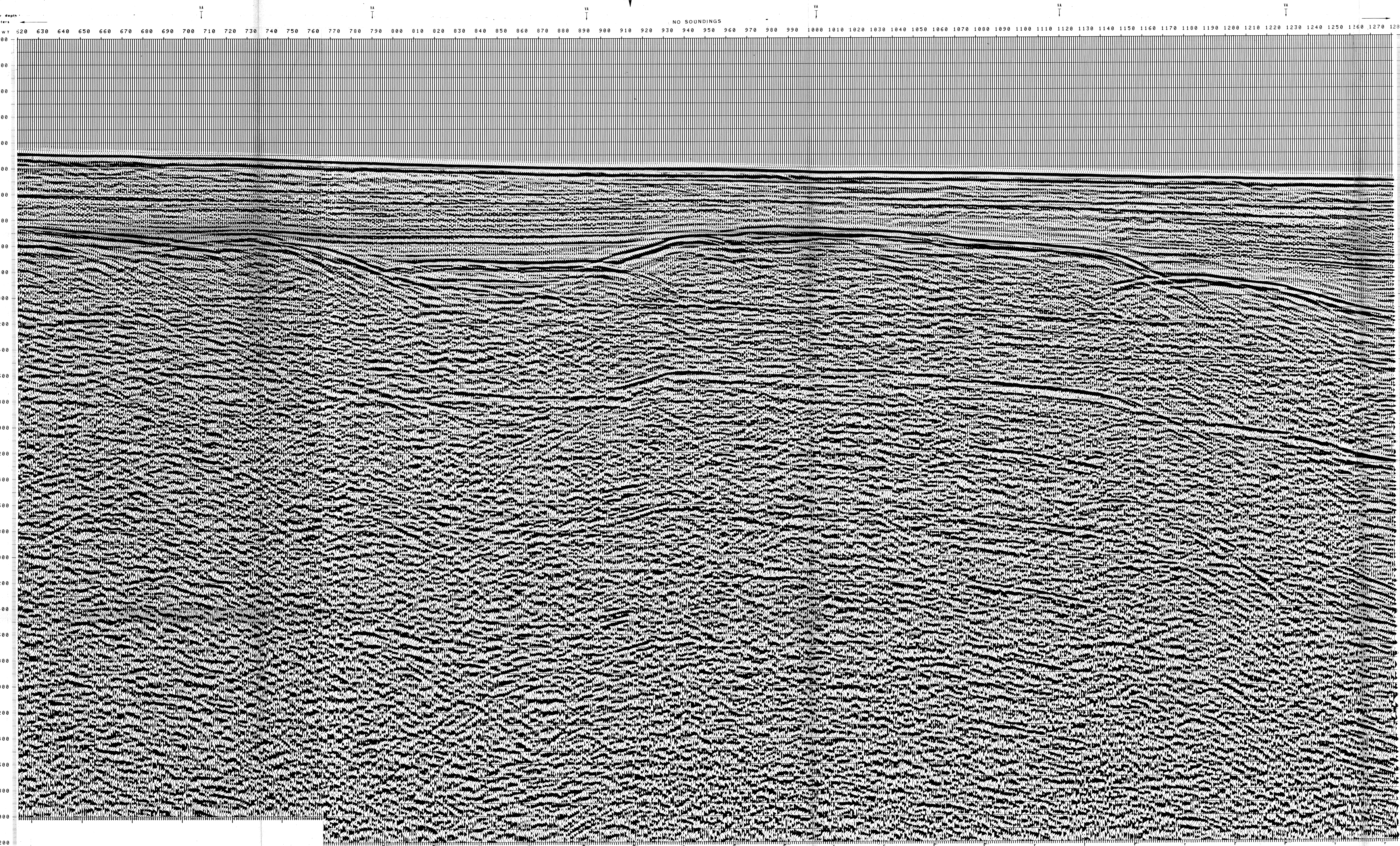
- 7 STACK 4800%
- 8 TIME VARIANT FILTER (origin sea bottom)
- 9 TRACE EQUALIZATION
- 10 ANALOG DISPLAY

Ship: GLORITA TIDE Shooting date: DEC 1975
Field recorder: SN 338 Filter: VB 125
Floating point: sampling 4 ms
Streamer: 2400 m (depth 10 m)
Groups: 48 (group interval 50 m)
Geophones type: HC 201 n° 48 / group
dFold coverage

Energy source: VAPORCHOC (depth 6 m)
1 1/2" 1" Streamer

310" SHORAN positioning

00134



NO SOUNDINGS		VARIABLE FILTER					
TWI	AV. VEL.	AV. VEL.	AV. VEL.	AV. VEL.	AV. VEL.	AV. VEL.	IV
	IN M/S	IN M/S	IN M/S	IN M/S	IN M/S	IN M/S	
800							
1000	1500	1500	1500	1500	1500	1500	
1200	1500	1500	1500	1500	1500	1500	
1400	1500	1500	1500	1500	1500	1500	
1600	1510	1500	1500	1500	1500	1500	
1800	1604	1526	1528	1517	1500	1500	
2000	1674	1595	1558	1541	1536	1516	
2200	1840	1650	1597	1592	1614	1626	1547
2400	2102	1751	1751	1686	1780	1738	1590
2600	2350	2517	1940	1777	1999	1954	1709
2800	2721	2310	2200	1995	2230	2224	1868
3000	3163	2637	2534	2268	2550	2519	2107
3200	3449	3054	2922	2780	2917	2769	2460
3400	3692	3326	3285	3069	3207	3142	2786
3600	3899	3560	3448	3321	3449	3385	2932
3800	4079	3763	3658	3539	3659	3603	3269
4000	4237	3940	3842	3731	3843	3790	3478
4200	4376	4097	4004	3899	4005	3956	3661
4400	4499	4236	4168	4049	4149	4103	3824
4600	4610	4360	4277	4194	4278	4234	3971
4800	4709	4472	4393	4304	4394	4352	4102
5000	4799	4573	4498	4414	4499	4459	4221
5200	4881	4665	4594	4513	4595	4557	4329
5400	4956	4749	4681	4604	4682	4645	4428
5600	5024	4827	4763	4687	4762	4727	4518
5800	5087	4897	4835	4763	4835	4802	4601
6000	5146	4963	4902	4834	4903	4871	4678
6200	5199	5024	4965	4899	4966	4935	4749
	5249	5080	5024	4960	5024	4994	4816
	5296	5132	5078	5017	5079	5050	4877
	5339	5181	5129	5069	5129	5101	4934
	5380	5227	5176	5119	5177	5150	4986