

997-11-50 **AGIP**

OFFSHORE ITALIA
ZONA F

NW **1** LINEA **F-75-22** SE **619**

1 km

COMPAGNIE GÉNÉRALES DE GÉOPHYSIQUE

524 Date: MAY 6 '76 Checked: RZ

DIGITAL PROCESSING P5
TIME ORIGIN: Source and cable depth
STACK 4800%
Boat motion

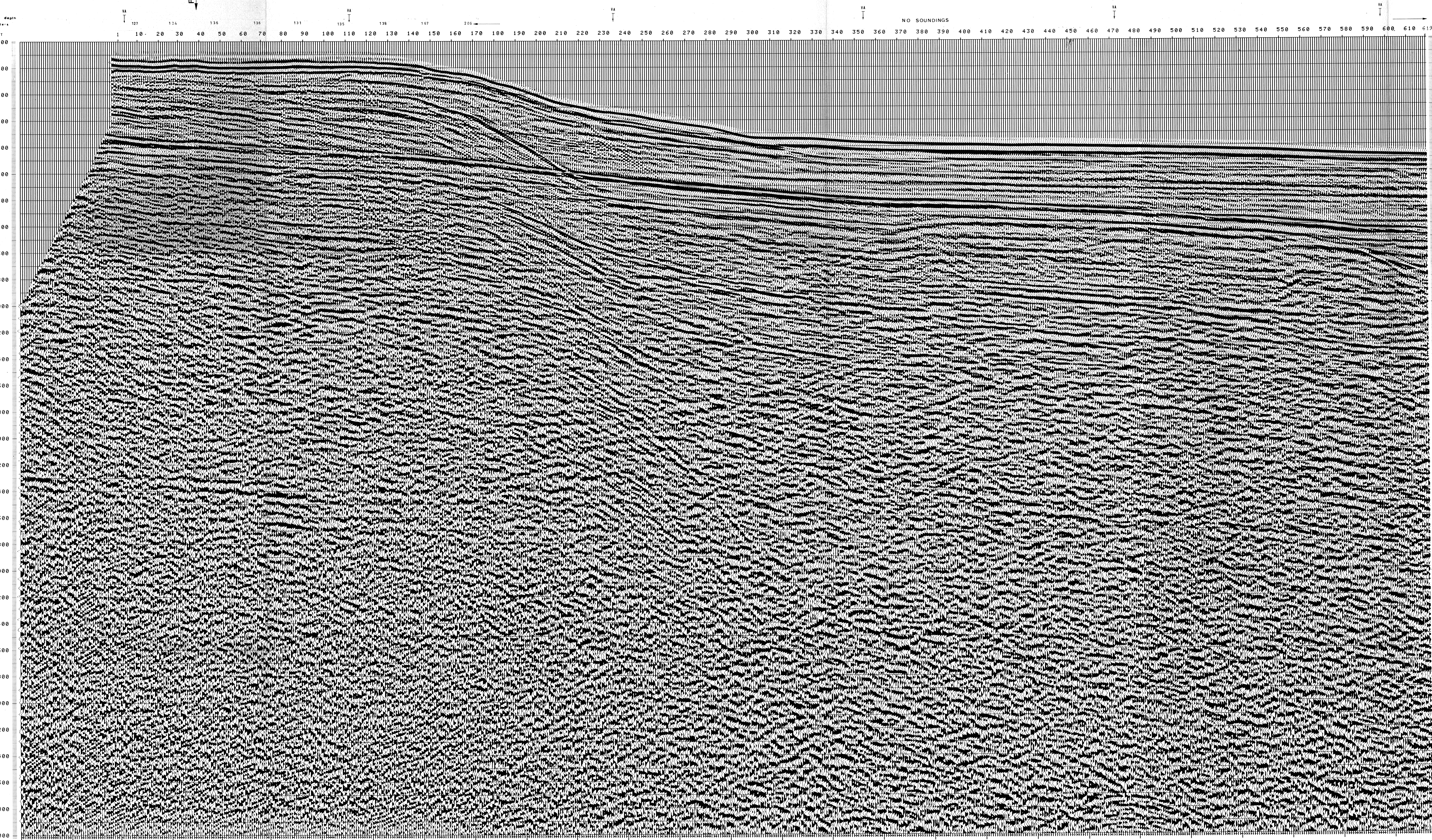
PROCESSING
SAMPLING RATE 4 Hz

1. AMPLITUDE RECOVERY
2. WAPCO stabilization by vaporchoc signal
3. MUTING
4. DECONVOLUTION 240 ms
Windows: 500 2300 ms J. Below
1800 2800 ms Top bottom
5. VELOCITY ANALYSIS (VA)
6. NMO CORRECTIONS
(LINEAR INTERPOLATION BETWEEN VELOCITY FUNCTIONS)
7. STACK 4800%
8. TIME VARIANT FILTER (Origin sea bottom)
9. TRACE EQUALIZATION
10. ANALOG DISPLAY

FIELD RECORDING
SAMPLING RATE 4 Hz

Ship: GLORITA TIDE Shooting date: DEC/1975
Field recorder: SN 338 Filter: VB 125
Floating point: sampling 4 ms
Streamer: 2400 m (cable 1g m)
Groups: 48 (group interval 50 m)
Geophones type: HC 201 n° 48 / group
48Fold coverage
Energy source: VAPORCHOC (Depth: 310 m)
SHORAN positioning

00133



TWT	*FROM SP*FROM SP*FROM SP*FROM SP*FROM SP*FROM SP*FROM SP*FROM SP*							
	1*	110*	225*	353*	471*	707*	825*	943*
	TO SP	TO SP	TO SP	TO SP	TO SP	TO SP	TO SP	TO SP
000	134	254	374	494	614	734	854	974
200	152	272	392	512	632	752	872	992
400	161	281	401	521	641	761	881	1001
600	179	299	419	539	659	779	899	1019
800	197	317	437	557	677	797	917	1037
1000	212	332	452	572	692	812	932	1052
1200	247	367	487	607	727	847	967	1087
1400	275	395	515	635	755	875	995	1115
1600	293	413	533	653	773	893	1013	1133
1800	376	496	616	736	856	976	1096	1216
2000	369	489	609	729	849	969	1089	1209
2200	396	516	636	756	876	996	1116	1236
2400	418	538	658	778	898	1018	1138	1258
2600	436	556	676	796	916	1036	1156	1276
2800	457	577	697	817	937	1057	1177	1297
3000	466	586	706	826	946	1066	1186	1306
3200	478	598	718	838	958	1078	1198	1318
3400	489	609	729	849	969	1089	1209	1329
3600	498	618	738	858	978	1098	1218	1338
3800	507	627	747	867	987	1107	1227	1347
4000	514	634	754	874	994	1114	1234	1354
4200	521	641	761	881	1001	1121	1241	1361
4400	521	641	761	881	1001	1121	1241	1361
4600	538	658	778	898	1018	1138	1258	1378
4800	539	659	779	899	1019	1139	1259	1379
5000	549	669	789	909	1029	1149	1269	1389
5200	544	664	784	904	1024	1144	1264	1384
5400	525	645	765	885	1005	1125	1245	1365
5600	553	673	793	913	1033	1153	1273	1393
5800	559	679	799	919	1039	1159	1279	1399
6000	563	683	803	923	1043	1163	1283	1403