

997-11-50

AGIP

OFFSHORE ITALIA  
ZONA F

W 776 LINEA F.75.107 360 E

1 km

COMPAGNIE GENERALE  
DE GEOPHYSIQUE

DIGITAL PROCESSING P5

TIME ORIGIN: Source and cable depth

STACK 4800 %

Boat motion

338

Date: FEB12.76 Checked

PROCESSING  
SAMPLING RATE 4 ms

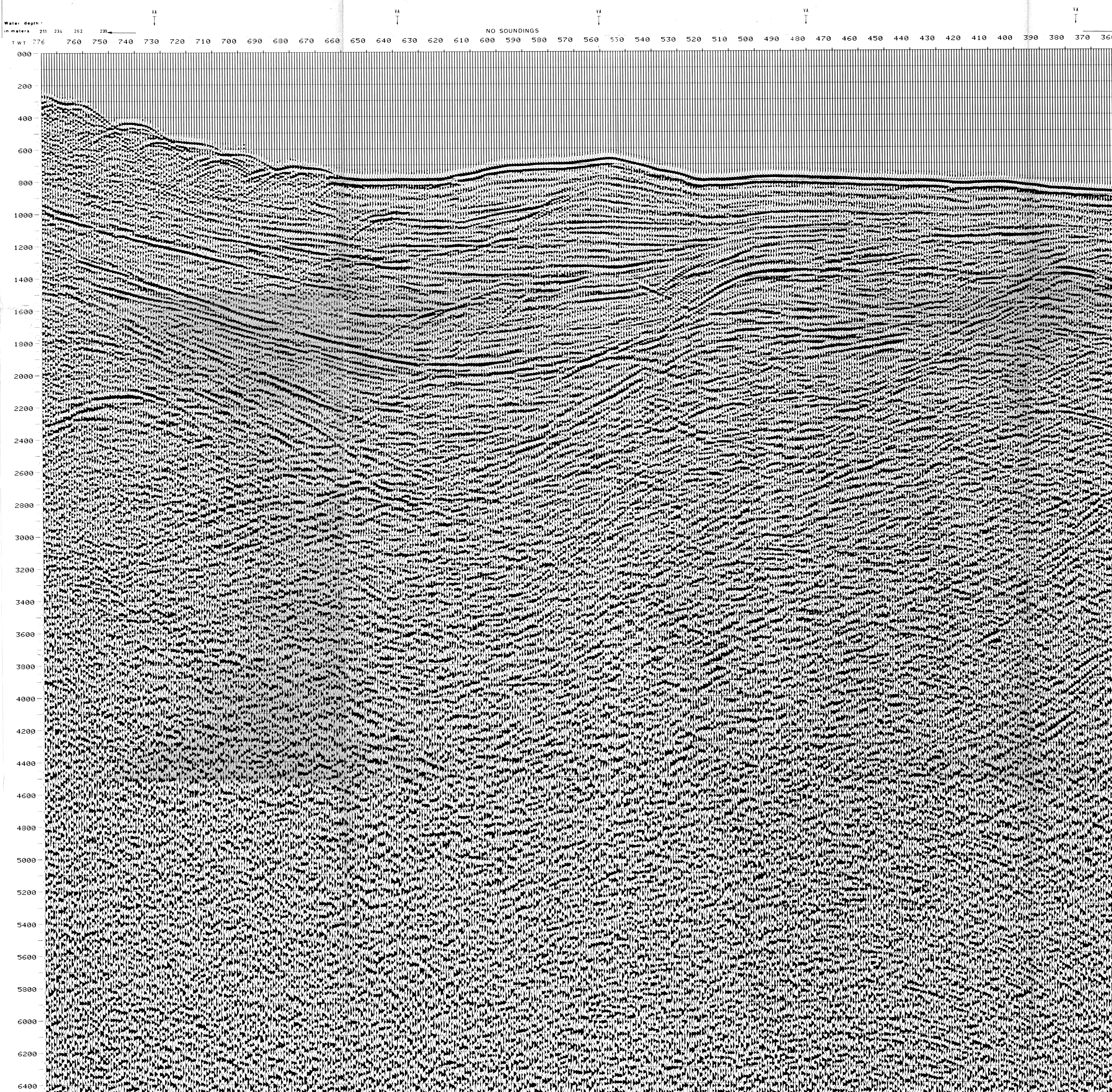
- 1 AMPLITUDE RECOVERY
- 2 WAPC (stabilization by vaporchoc signal)
- 3 MUTING
- 4 DECONVOLUTION 240 ms  
windows: 500 - 2300 ms J Below  
1900 - 3600 ms J sea bottom
- 5 VELOCITY ANALYSIS (VA)
- 6 NMO CORRECTIONS  
(LINEAR INTERPOLATION  
BETWEEN VELOCITY FUNCTIONS)

- 7 STACK 4800 %
- 8 TIME VARIANT FILTER (Origin sea bottom)
- 9 TRACE EQUALIZATION
- 10 ANALOG DISPLAY

FIELD RECORDING  
SAMPLING RATE 4 ms

Ship GLORITA TIDE Shooting date: NOV/1975  
 Field recorder SN 338 filter VB-125  
 Floating point sampling 4 ms  
 Streamer 2400 m (Depth 19 m)  
 groups 48 (group interval 50 m)  
 Geophones type HC201 n° 48 / group  
 48Fold coverage  
 Energy source VAPORCHOC (Depth 6 m)  
 SP Tr1 Streamer Tr48  
 330m MOTOROLA positioning

00369



TWT	*F75107 * *FROM SP*FROM SP*FROM SP*FROM SP*FROM SP*FROM SP*						VARIABLE FILTER
	731*	636*	556*	476*	374*	274*	
	TO SP*	TO SP*	TO SP*	TO SP*	TO SP*	TO SP*	997.11.50
	776*	637*	559*	476*	375*	275*	II
	*AV. VEL.*AV. VEL.*AV. VEL.*AV. VEL.*AV. VEL.*AV. VEL.*						Frequency in Hz
	IN M/S*	IN M/S*	IN M/S*	IN M/S*	IN M/S*	IN M/S*	0 10 20 30 40 50 60
000							
200	1500	1500	1500	1500	1500	1500	
400	1527	1500	1500	1500	1500	1500	
600	1572	1500	1500	1500	1500	1500	
800	1634	1517	1553	1500	1500	1500	
1000	1730	1623	1633	1629	1576	1623	
1200	1832	1687	1702	1676	1650	1653	
1400	1932	1749	1761	1760	1717	1734	
1600	2039	1815	1854	1767	1811	1801	
1800	2132	1950	2006	1990	1864	1766	
2000	2254	2059	2175	2044	1967	1871	
2200	2343	2162	2265	2121	2026	1962	
2400	2427	2311	2347	2325	2169	2103	
2600	2671	2435	2421	2469	2268	2077	
2800	3060	2540	2547	2601	2499	2461	
3000	3261	2758	2764	2623	2719	2674	
3200	3420	2940	2954	3010	2912	2771	
3400	3560	3116	3121	3182	3082	3043	
3600	3684	3265	3270	3326	3233	3197	
3800	3796	3398	3403	3456	3368	3334	
4000	3896	3516	3523	3575	3489	3457	
4200	3987	3627	3631	3681	3599	3568	
4400	4069	3726	3730	3777	3699	3670	
4600	4144	3816	3820	3865	3791	3762	
4800	4213	3896	3902	3946	3874	3847	
5000	4277	3974	3976	4020	3951	3925	
5200	4335	4045	4046	4088	4023	3997	
5400	4383	4116	4113	4152	4088	4064	
5600	4440	4178	4173	4210	4149	4126	
5800	4487	4226	4236	4265	4206	4194	
6000	4530	4273	4282	4316	4250	4230	
6200	4571	4296	4301	4364	4286	4261	
6400	4610	4274	4277	4409	4356	4330	