

997-11-50

**AGIP**

OFFSHORE ITALIA  
ZONA F

SW 610 LINEA F-75-101 NE 1248

1 km

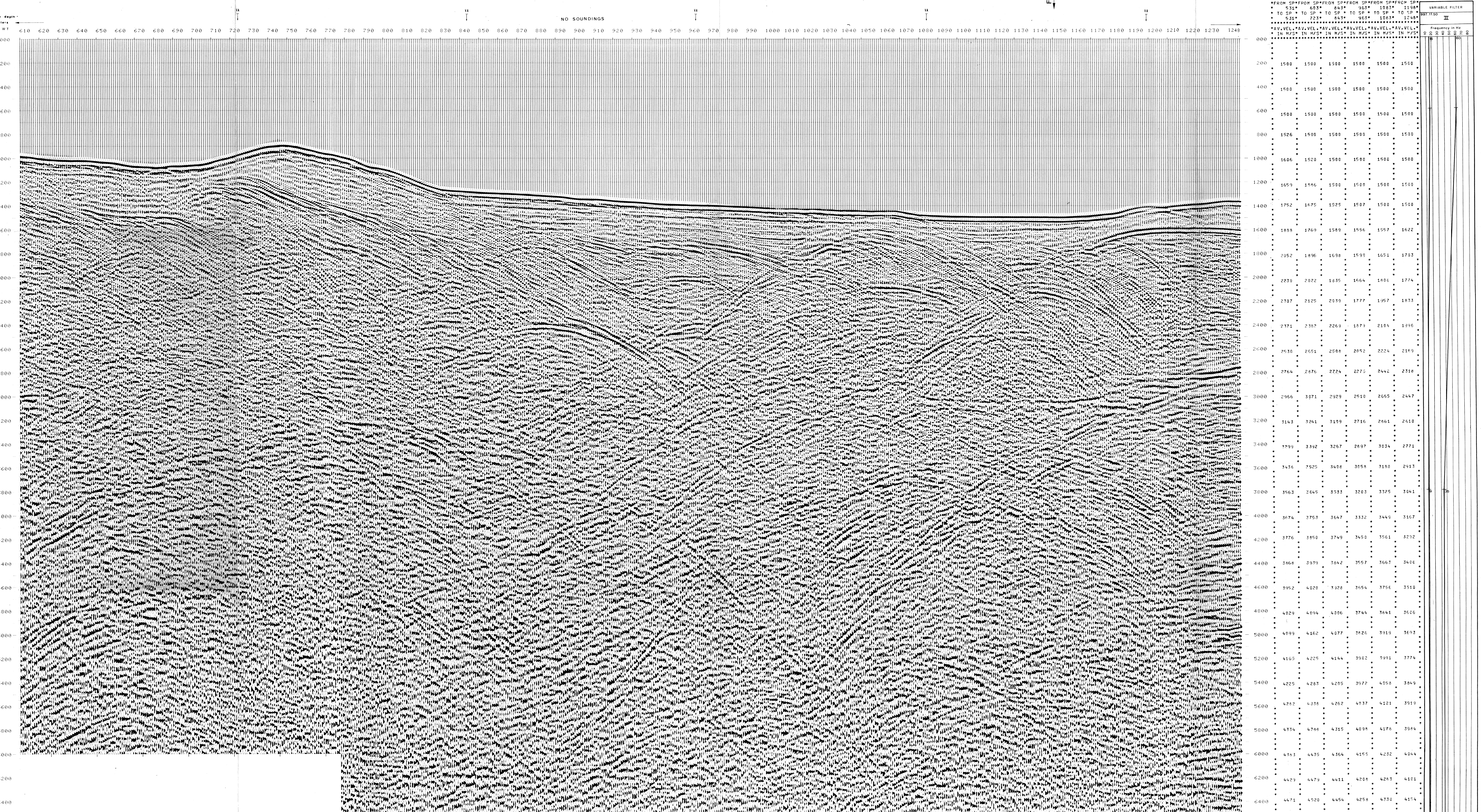
COMPAGNIE GÉNÉRALES DE GÉOPHYSIQUE

DIGITAL PROCESSING P5	PROCESSING (SAMPLING RATE 4 m)	FIELD RECORDING (SAMPLING RATE 4 m)
1 AMPLITUDE RECOVERY	7 STACK 4800 %	Ship GLORITA TIDE Shooting date: NOV/1975
2 WAF (stabilization by vaporchoc signal)	8 TIME VARIANT FILTER (origin sea bottom)	Field recorder SN 338 filter VB 125
3 MUTING	9 TRACE EQUALIZATION	Floating point sampling 4 ms
4 DECONVOLUTION 240 ms WINDOWS 500 - 2300 ms J filter 1800 - 3000 ms sea bottom	10 ANALOG DISPLAY	Streamer 2400 m (depth 19 m) groups 48 (group interval 50 m)
5 VELOCITY ANALYSIS (VA)		Geophones type HC 201 n° 48 / group
6 KMO CORRECTIONS (LINEAR INTERPOLATION BETWEEN VELOCITY FUNCTIONS)		48Fold coverage
		Energy source VAPORCHOC (depth 6 m)
		SP Tri Streamer 1748
		330m MOTOROLA positioning

Boat motion

390 Date MARCH 10, 76 Checked

00364



VARIABLE FILTER									
997-11-50									
Frequency in Hz									
SP	SP	SP	SP	SP	SP	SP	SP	SP	SP
TO SP	TO SP	TO SP	TO SP	TO SP	TO SP	TO SP	TO SP	TO SP	TO SP
IN M/S	IN M/S	IN M/S	IN M/S	IN M/S	IN M/S	IN M/S	IN M/S	IN M/S	IN M/S
531	603	643	663	683	703	723	743	763	783
803	843	883	923	963	1003	1043	1083	1123	1163
1203	1243	1283	1323	1363	1403	1443	1483	1523	1563
1603	1643	1683	1723	1763	1803	1843	1883	1923	1963
2003	2043	2083	2123	2163	2203	2243	2283	2323	2363
2403	2443	2483	2523	2563	2603	2643	2683	2723	2763
2803	2843	2883	2923	2963	3003	3043	3083	3123	3163
3203	3243	3283	3323	3363	3403	3443	3483	3523	3563
3603	3643	3683	3723	3763	3803	3843	3883	3923	3963
4003	4043	4083	4123	4163	4203	4243	4283	4323	4363
4403	4443	4483	4523	4563	4603	4643	4683	4723	4763
4803	4843	4883	4923	4963	5003	5043	5083	5123	5163
5203	5243	5283	5323	5363	5403	5443	5483	5523	5563
5603	5643	5683	5723	5763	5803	5843	5883	5923	5963
6003	6043	6083	6123	6163	6203	6243	6283	6323	6363
6403	6443	6483	6523	6563	6603	6643	6683	6723	6763