



THE AQUAPULSE SYSTEM

LINE: ES-326

S.P. 87 to S.P. 010D

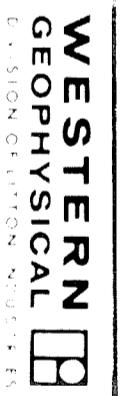
DATUM PLANE: SEA LEVEL

SOUTHEAST



AREA: SARDINIA-CAGLIARI

PROSPECT: ZONE "E"



MILAN DIGITAL CENTER

RECORDING DATA

DATE: 1988 APRIL 1988
ENERGY SOURCE: AQUAPULSE
FILTER: 10-80 HZ
CABLE: 1600 m
GEOPHONES: 32 CRYSTAL ELEMENT
TAPERED ARRAY
LEAD IN: 650 FT
AMPLIFIER RECORD BINARY GAIN
CHARGE SIZE: 4 GUNS 200
DATE SHOT: APRIL 1988

PROCESSING INFORMATION

DECONVOLUTION
SAMPLE RATE: 2 ms
TIME VARIANT FILTER
TIME ZONE Hz DB OCT Hz DB OCT
L.C. H.C.
0.00 - 0.35 20 18 50 12
0.35 - 0.50 15 18 45 12
0.50 - 0.90 10 12 40 12
0.90 - 1.55 10 12 35 12
1.55 - 4.00 5 6 30 6

PROCESSING SEQUENCE

1) EDIT - SUM 3 PORS
2) DECONVOLVED BEFORE STACK
3) NORMAL MOVE CUT
4) STACK (20%)
5) TV-FILTER
6) PLAYBACK (UNFILTERED)
REFL. NO: 71 795
DATE: JULY 1988

M-MESA 5014

VELOCITY CHANGE
INTERSECTION S.P.
LINE ES-326
151

M-MESA 5011

VELOCITY CHANGE
M-MESA 5010

VELOCITY CHANGE
M-MESA 5009

VELOCITY CHANGE
M-MESA 5003

VELOCITY CHANGE
INTERSECTION S.P.
LINE ES-309
157

M-MESA 5004

WATER DEPTH
IN METRES
87 37

75 42

69 44

63 48

57 49

51 51

45 57

39 60

33 88

27 146

21 186

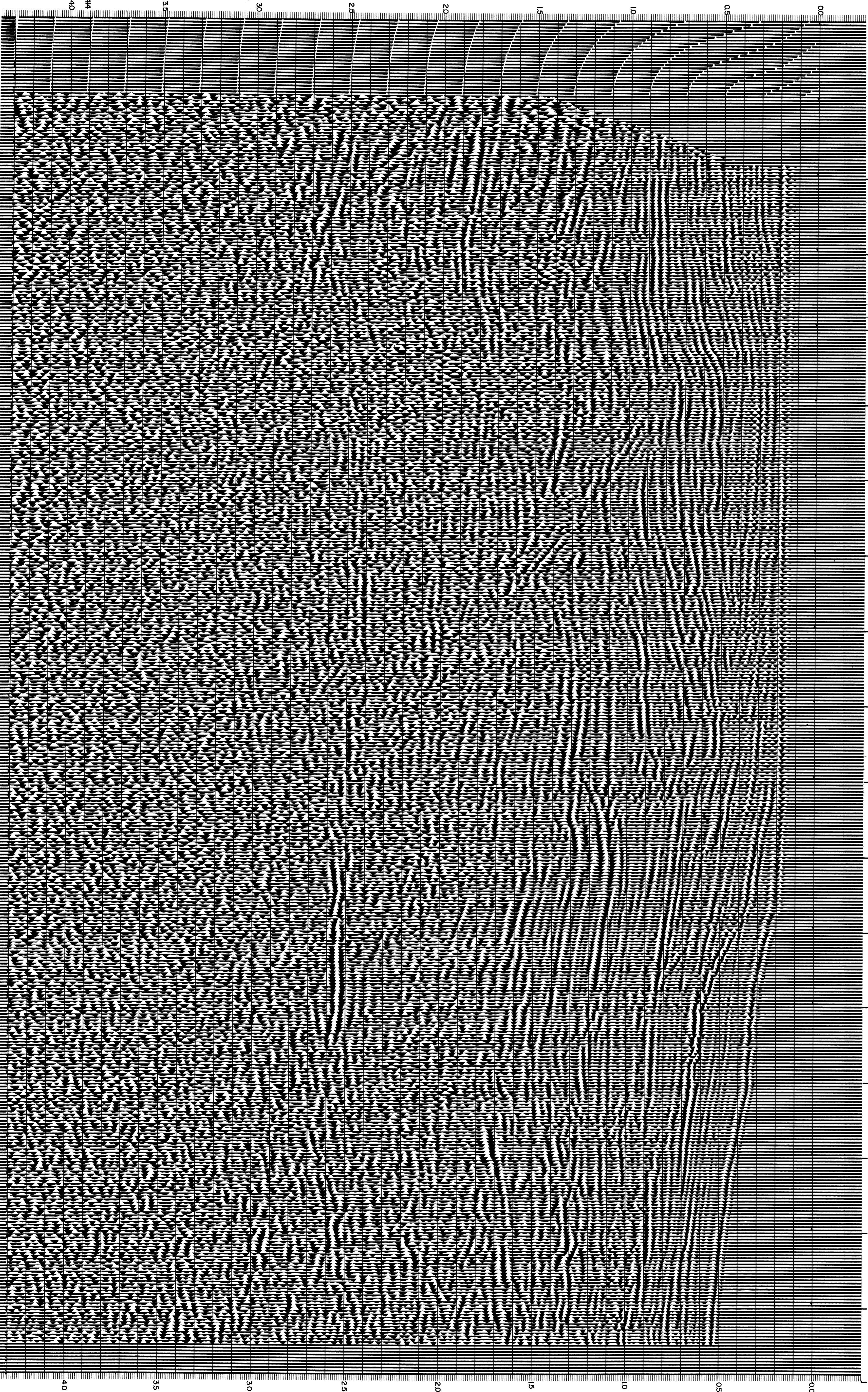
15 212

9 269

3 315

04 338

010D



CS244

40

35

30

25

20

15

10

05

00

40

35

30

25

20

15

10

05

00