



THE AQUAPULSE SYSTEM

LINE: ES-319

S.P. 77 to S.P. 08D

NORTHEAST

DATUM PLANE: SEA LEVEL

**AGIP**

AREA: SARDINIA-CAGLIARI

PROSPECT: ZONE "E"

**WESTERN**  
GEOPHYSICAL  
DIVISION OF LUBRON INDUSTRIES  
MILAN DIGITAL CENTER

RECORDING DATA

PARTY NO. 62  
ENERGY SOURCE AQUAPULSE  
FILTER 10-80 HZ  
CABLE 1600 m  
GEOPHONES 32 CRYSTAL ELEMENT  
TAPERED ARRAY  
LEAD IN 650 FT  
AMPLIFIER REDCOR BINARY GAIN  
CHARGE SIZE 4 GUNS POP  
DATE SHOT APRIL 1968

PROCESSING INFORMATION

SAMPLE RATE 2 ms

DECONVOLUTION

DECONVOLVED BEFORE STACK

AUTO CORR INT  
MAX APERTURE 0-340ms  
TIME ZONE 0-4 sec  
ITERATIONS 4

TIME VARIANT FILTER

TIME ZONE Hz DB OCT Hz DB OCT

LC	HC
0 - 650	20 - 18
.650 - 1.050	10 - 18
1.050 - 1.950	10 - 12
1.950 - 4000	10 - 12
	30 - 12

PROCESSING SEQUENCE

- 1) EDIT - (SUM 3 POPS)
- 2) DECONVOLVED BEFORE STACK
- 3) NORMAL MOVE-OUT
- 4) STACK (200%)
- 5) TV-FILTER
- 6) PLAYBACK (UNFILTERED)

REEL NO. 72264  
DATE JUNE 1968

INTERSECTION  
LINE ES-322  
S.P. 157

VELOCITY CHANGE

M-MESA 5003

M-MESA 5005

M-MESA 5004

M-MESA 5005

WATER DEPTH 77

71

65

59

53

47

41

35

29

23

17

11

5

02

08D

IN METRES 325

315

329

305

311

302

329

362

311

324

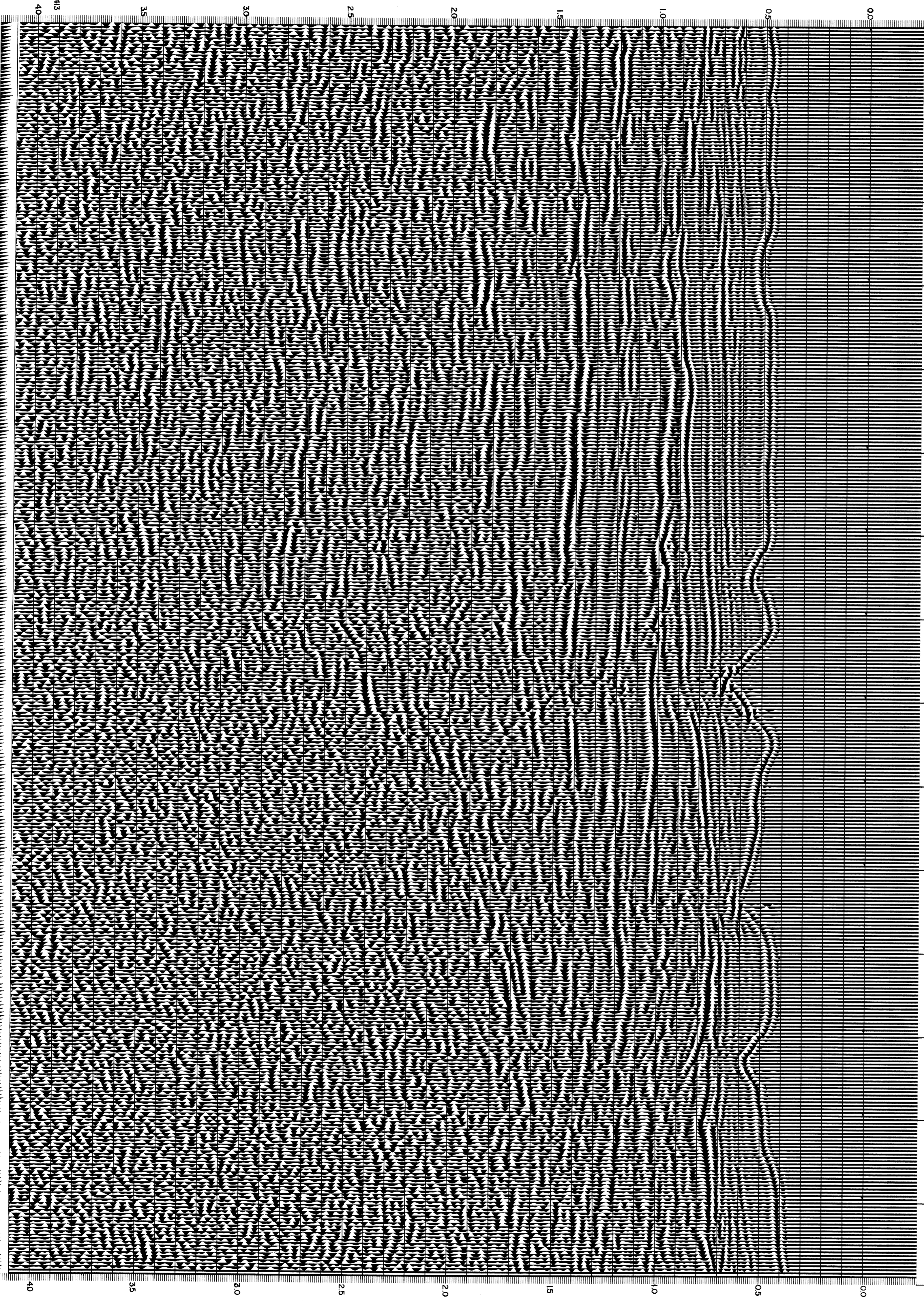
393

329

329

329

329



CS243

40

35

30

25

20

15

10

05

00

40

35

30

25

20

15

10

05

00