



THE AQUAPULSE SYSTEM

LINE: ES-319

S.P. 173 to S.P. 83

DATUM PLANE: SEA LEVEL

NORTHEAST

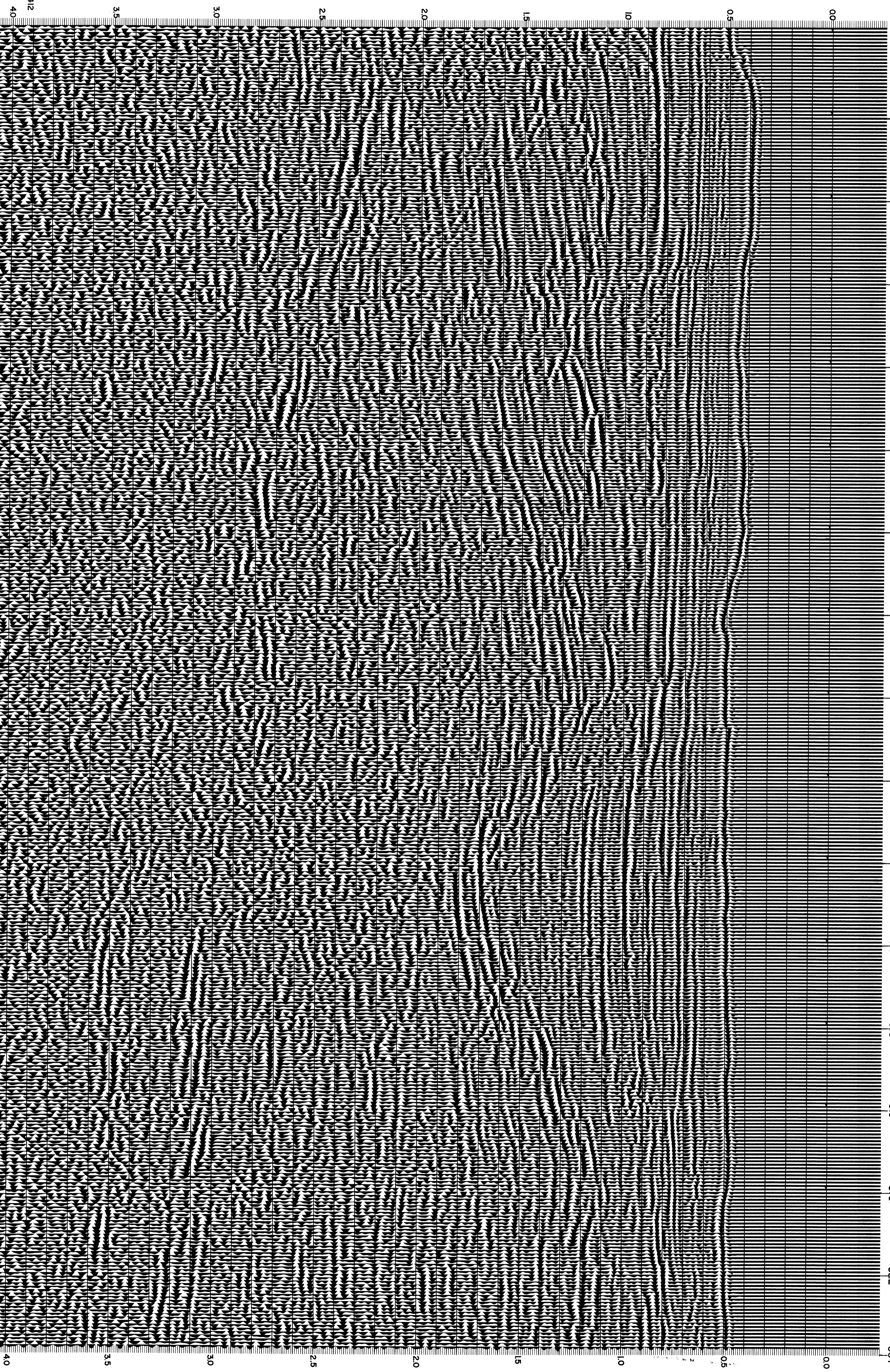
INTERSECTION
LINE ES-326
S.P. 7

M-MESA 5004

VELOCITY CHANGE

M-MESA 5005

WATER DEPTH IN METRES: 173, 167, 161, 155, 149, 143, 137, 131, 125, 119, 113, 107, 101, 95, 89, 83



AREA: SARDINIA - CAGLIARI

PROSPECT: ZONE "E"

WESTERN
GEOPHYSICAL
DIVISION OF LITTON INDUSTRIES
MILAN DIGITAL CENTER

RECORDING DATA

STARTY NO. 62
ENERGY SOURCE AQUAPULSE
FILTER 10-80 HZ
CABLE 1600 m
GEOPHONES 32 CRYSTAL ELEMENT
TAPERED ARRAY
LEAD IN 690 FI
AMPLIFIER RECORDER BINARY GAIN
CHANGE SIZE 4 GUNS BPP
DATE SHOT APRIL 1968

PROCESSING INFORMATION

DECONVOLUTION
DECONVOLVED BEFORE STACK
AUTO CORR INT TIME VARIANT
MAX APERTURE 0-340ms
TIME ZONE 0-4 sec
ITERATIONS 4
SAMPLE RATE 4 ms
TIME ZONE L C H C
Hz dB/OCT Hz dB/OCT
0-690 20-18 50-12
690-1090 10-18 40-12
1090-1980 10-12 35-12
1980-4000 10-12 30-12

PROCESSING SEQUENCE

1) EDIT (-SUM 3 POPS)
2) DECONVOLVED BEFORE STACK
3) NORMAL MOVE CUT
4) STACK (20%)
5) TV-FILTER
6) PLAYBACK (U-FILTERED)
REEL NO. 72264
DATE JUNE 1968

CS2412