



THE AQUAPULSE SYSTEM

LINE: ES-319

S.P. 263 to S.P.179

DATUM PLANE: SEA LEVEL

NORTHEAST



AREA: SARDINIA-CAGLIARI

PROSPECT: ZONE "E"



RECORDING DATA

FLY NO. 02
ENERGY SOURCE AQUAPULSE
FILTER 10-80 HZ
CABLE 180CM
GEOPHONES 32 CRYSTAL ELEMENT
TAPERED ARRAY
LEAD IN 650 FT
AMPLIFIER MODEL BINARY GAIN
CHARGE SIZE 4 GUNS POP
DATE SHOT APRIL 1968

PROCESSING INFORMATION

DECONVOLUTION
DECONVOLVED BEFORE STACK
TIME VARIANT FILTER
TIME ZONE HZ DB OCT HZ DB OCT
L.C. H.C.
0 - 18 20 - 18 50 - 12
650 - 1050 10 - 18 40 - 12
1050 - 1950 10 - 12 35 - 12
1950 - 4000 10 - 12 30 - 12

PROCESSING SEQUENCE

1. EDIT - SUM 3 POS.
2. DECONVOLVED BEFORE STACK
3. NORMAL WAVE CUT
4. STACK (20%)
5. TV-FILTER
6. PLAYBACK (U-FILTERED)
REFI. NO. 72264
DATE JUNE 1968

M-MESA 5008

M-MESA 5001

M-MESA 5002

M-MESA 5003

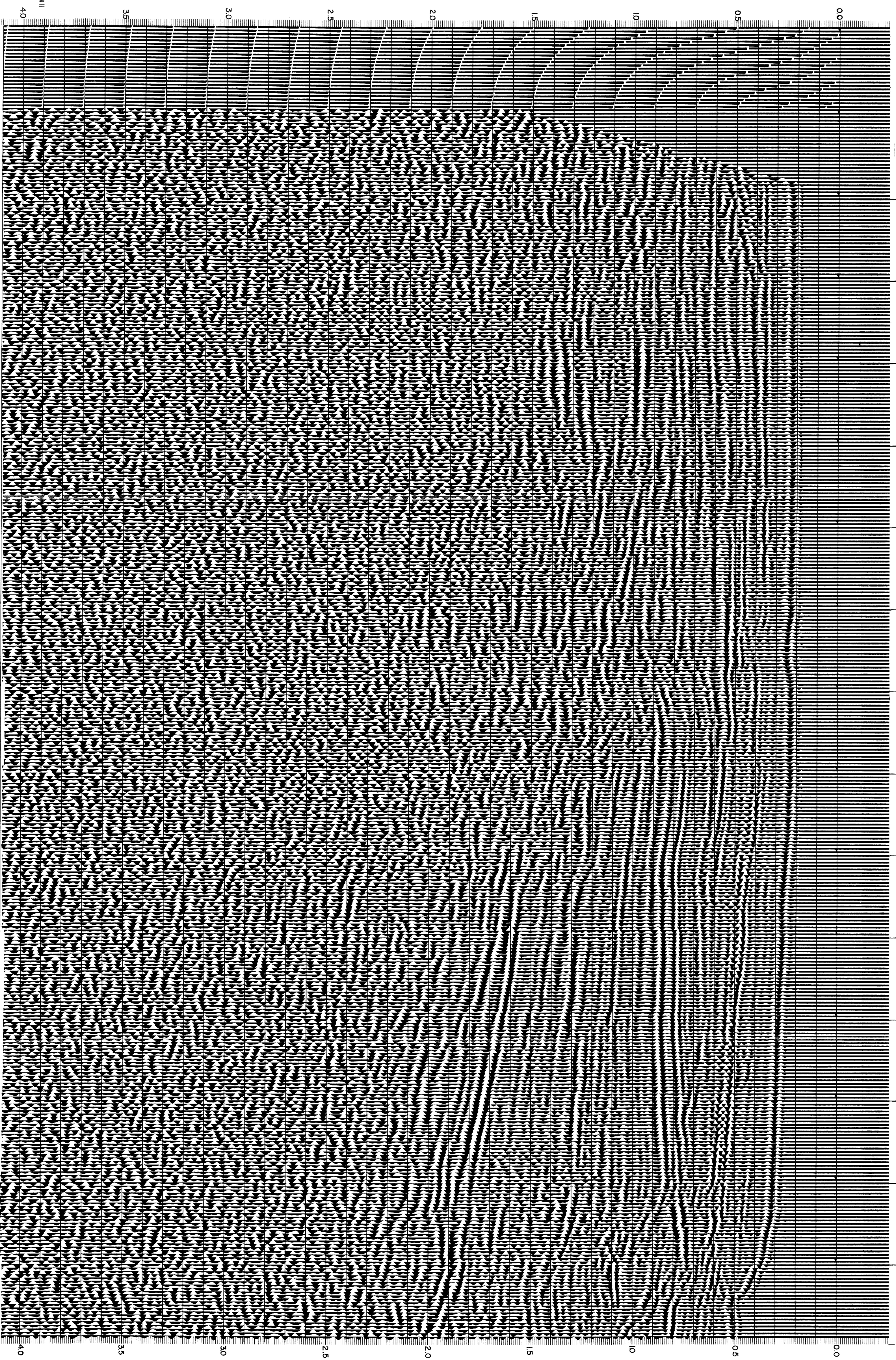
VELOCITY CHANGE

VELOCITY CHANGE

VELOCITY CHANGE

INTERSECTION
LINE ES-328
S.P. 9

WATER DEPTH IN METRES 263 257 251 245 239 233 227 221 215 209 203 197 191 185 179



CS-2411