



THE AQUAPULSE SYSTEM

LINE: ES-234

S.P. 162 to S.P. 78

DATUM PLANE: SEA LEVEL

EAST



AREA: SARDINIA - ORISTANO

PROSPECT: ZONE "E"

WESTERN  
GEOPHYSICAL  
CORPORATION  
MILAN DIGITAL CENTER

RECORDING DATA

SURF NO. 62  
ENERGY SOURCE AQUAPULSE  
FILTER 10-80 HZ  
CABLE 1600m  
GEOPHONES 32 CRYSTAL ELEMENT  
TAPERED ARRAY  
LEAD IN 650 FT.  
AMPLIFIER RECORD BINARY GAIN  
CHARGE SIZE 4 GUNS POP  
DATE SHOT APRIL 1968

PROCESSING INFORMATION

SAMPLE RATE 4 ms

DECONVOLUTION

DECONVOLVED BEFORE STACK

AUTO CORR INT  
MAX APERIURE  
TIME ZONE  
ITERATIONS

TIME VARIANT FILTER

TIME ZONE Hz dB OCT Hz dB OCT

0.00 - 0.425 23 18 30 12  
0.425 - 0.75 15 12 45 12  
0.75 - 1.10 10 12 40 12  
1.10 - 4.00 10 12 35 12

PROCESSING SEQUENCE

- 1) EDIT - (SUM 3 POP-5)
- 2) DECONVOLVED BEFORE STACK
- 3) NORMAL MOVE OUT
- 4) STACK (20:1) %
- 5) TV FILTER
- 6) PLAYBACK (UNFILTERED)

REF. NO. 72317  
DATE JULY 1968

VELOCITY CHANGE VELOCITY CHANGE VELOCITY CHANGE VELOCITY CHANGE VELOCITY CHANGE VELOCITY CHANGE VELOCITY CHANGE VELOCITY CHANGE

M-MESA 5003

M-MESA 5019

M-MESA 5020

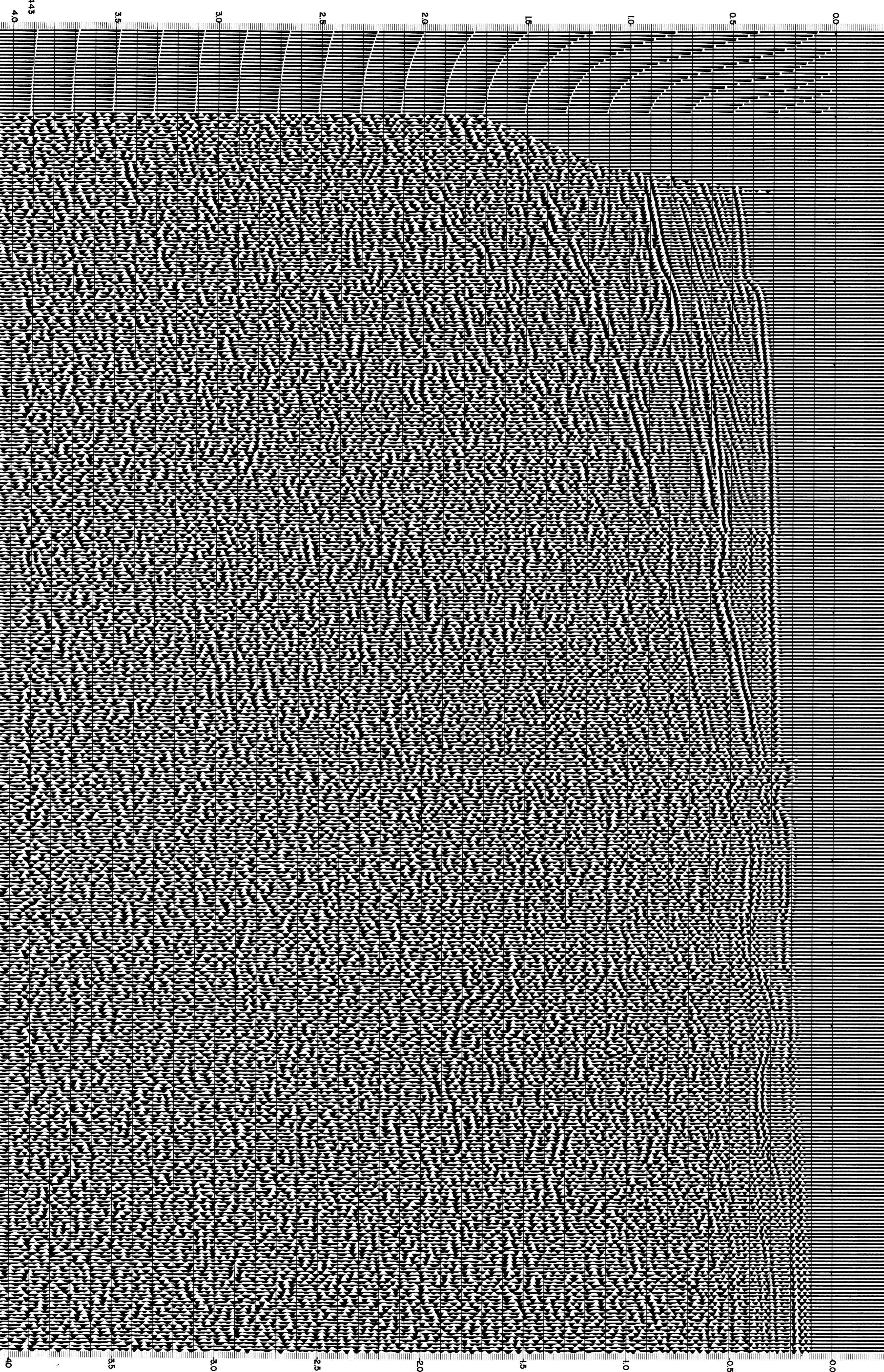
M-MESA 5015

M-MESA 5025

M-MESA 5038

WATER DEPTH  
IN METRES

162 156 150 M-MESA5002 144 138 132 126 120 114 108 102 96 90 84 78



C.S. 2443

4.0

3.9

3.0

2.5

2.0

1.5

1.0

0.5

0.0

3.5

3.0

2.5

2.0

1.5

1.0

0.5

0.0

3.5

3.0

2.5

2.0

1.5

1.0

0.5

0.0