



THE AQUAPULSE SYSTEM

LINE: ES-230

S.P.227 to S.P.119

DATUM PLANE: SEA LEVEL

EAST

AGIP

AREA: SARDINIA - ORISTANO

PROSPECT: ZONE "E"

WESTERN GEOPHYSICAL

MILAN DIGITAL CENTER

RECORDING DATA

PARTY NO. 62
 ENERGY SOURCE AQUAPULSE
 FILTER 10-30 HZ
 CABLE 1600 m
 GEOPHONES 32 CRYSTAL ELEMENT
 TAPERED ARRAY
 LEAD IN. 650 FT
 AMPLIFIER REDCOR BINARY GAIN
 CHARGE SIZE 4 GUNS POP
 DATE SHOT APRIL 1988

PROCESSING INFORMATION

DECONVOLUTION
 DECONVOLVED BEFORE STACK
 TIME VARIANT FILTER
 TIME ZONE
 L/C H/C
 Hz dB/OCT Hz dB/OCT Hz dB/OCT
 0.00 - 0.45 2.5 18 5.0 12
 0.45 - 0.85 1.5 12 4.5 12
 0.85 - 1.50 1.0 12 4.0 12
 1.50 - 4.00 1.0 12 3.5 12

PROCESSING SEQUENCE

1) EDIT (SUM 3 POPS)
 2) DECONVOLVED BEFORE STACK
 3) NORMAL MODE OUT
 4) STACK (20%²)
 5) TV-FILTER
 6) PLAYBACK (UNFILTERED)

REEL NO 72 I 71
 DATE JULY 1968

VELOCITY CHANGE

M-MESA 5007

INTERSECTION LINE ES-127

M-MESA 5019

VELOCITY CHANGE

M-MESA 5024

VELOCITY CHANGE

M-MESA 5020

VELOCITY CHANGE

M-MESA 5015

INTERSECTION LINE ES-129

M-MESA 5025

WATER DEPTH IN METRES

227

221

215

209

203

197

191

185

179

173

167

161

155

149

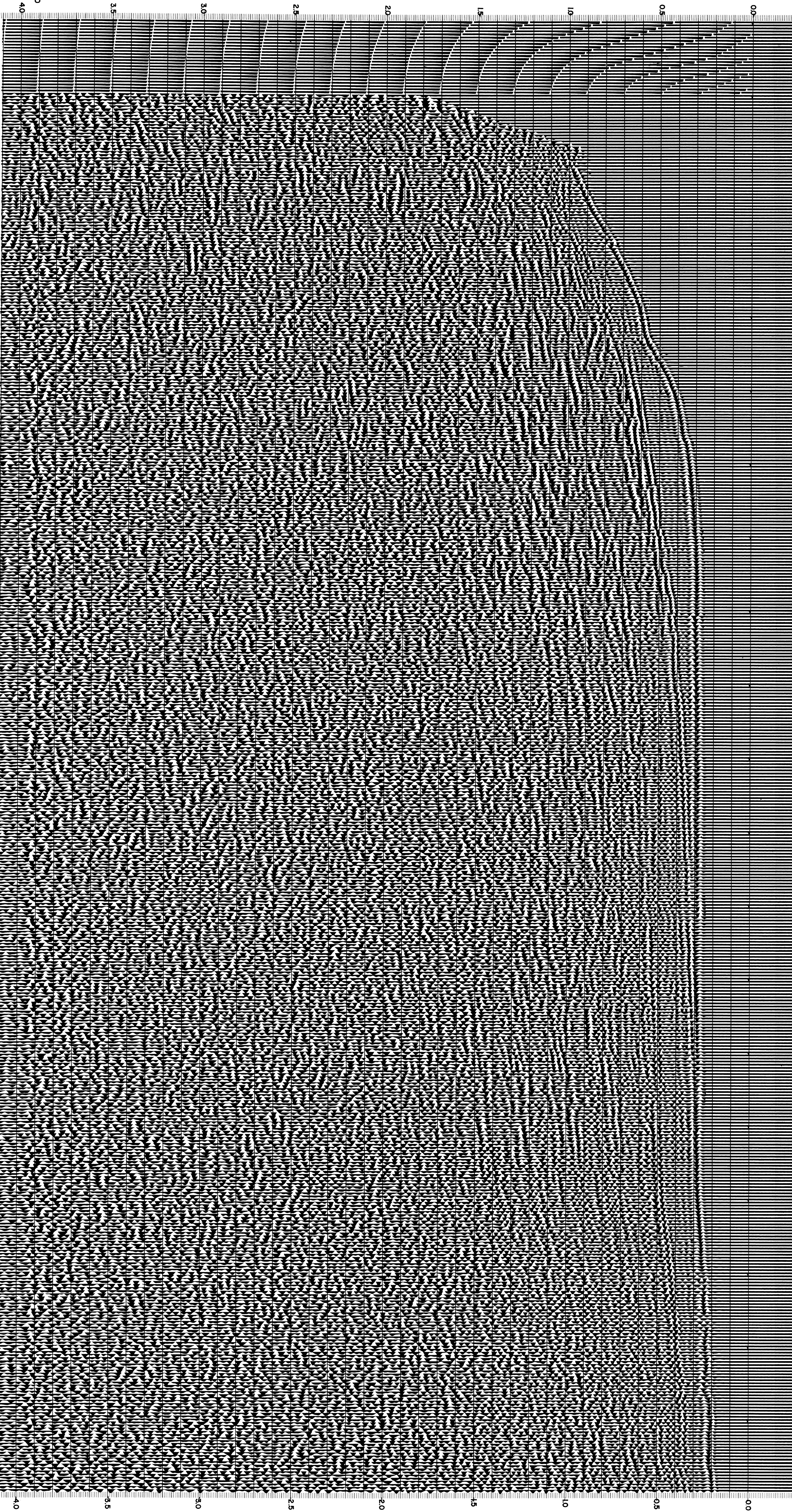
143

137

131

125

119



CS.2490