



THE AQUAPULSE SYSTEM

LINE: ES-228

S.P. 85 to S.P. 169

DATUM PLANE: SEA LEVEL

SOUTH

VELOCITY CHANGE

M-MESA 5014

M-MESA 5015

INTERSECTION  
LINE S.P.  
ES-123 339

**AGIP**

AREA: SARDINIA - ASINARA

PROSPECT: ZONE "E"

**WESTERN**  
GEOPHYSICAL  
DIVISION OF LITTON INDUSTRIES  
MILAN DIGITAL CENTER

RECORDING DATA

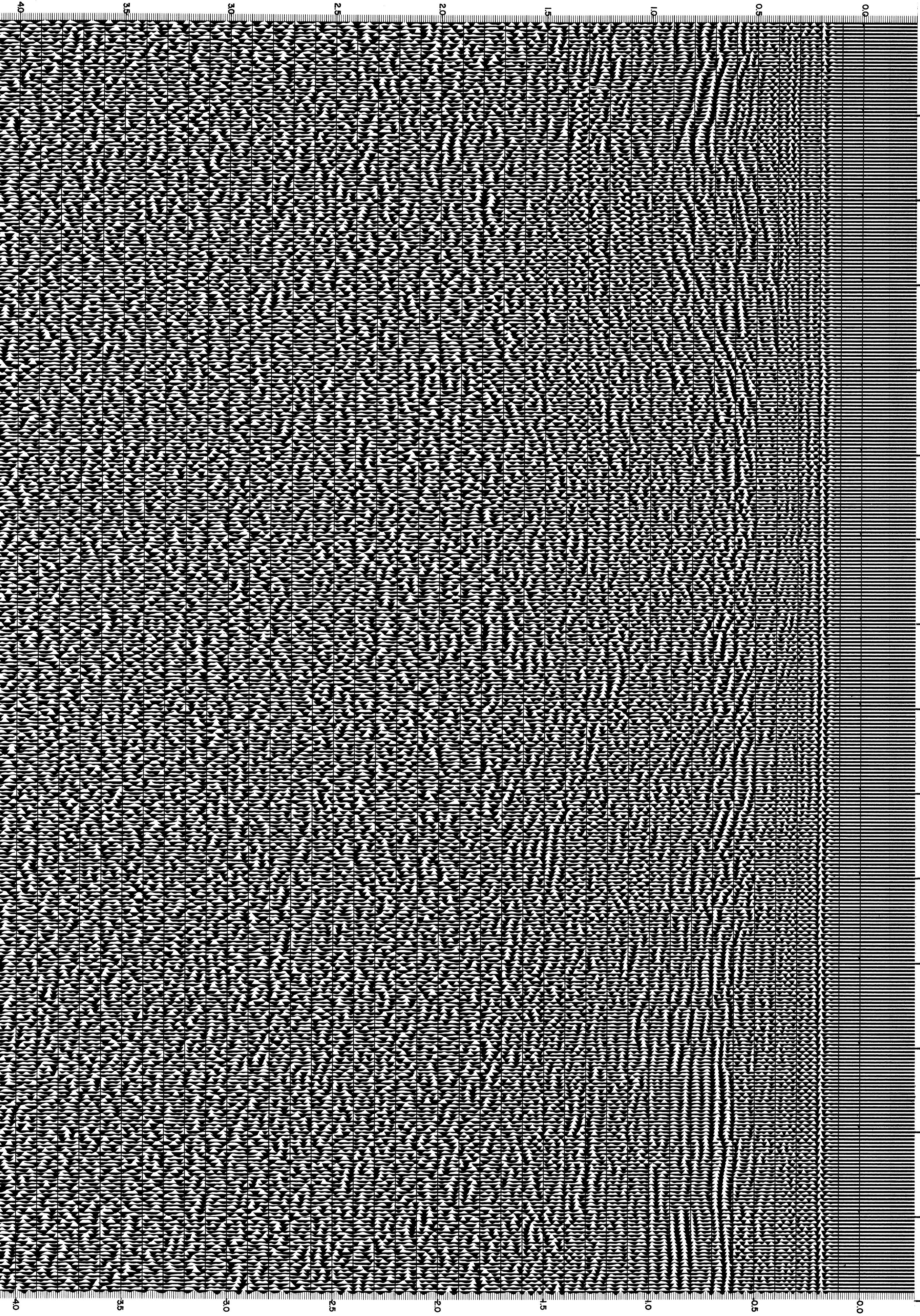
PARTY NO. 82  
ENERGY SOURCE AQUAPULSE  
FILTER 10-80 HZ  
CABLE 1600 m  
GEOPHONES 32 CRYSTAL ELEMENT  
TAPERED ARRAY  
LEAD IN 550 FT  
AMPLIFIER RECORD BINARY GAIN  
CHARGE SIZE 4 GUNS POP  
DATE SHOT APRIL 1968

PROCESSING INFORMATION

DECONVOLUTION  
DECONVOLVED BEFORE STACK  
AUTO CORR. INT  
MAX. APERTURE  
TIME ZONE  
ITERATIONS  
TIME VARIANT  
0.920 ms  
0-4 sec  
4  
SAMPLE RATE 2 ms  
TIME VARIANT FILTER  
TIME ZONE Hz DB OCT Hz DB OCT

PROCESSING SEQUENCE  
1) EDIT - (SUM 3 POPS)  
2) DECONVOLVED BEFORE STACK  
3) NORMAL MOVE OUT  
4) STACK 1200%  
5) TV-FILTER  
6) PLAYBACK (UNFILTERED)  
REFL NO. 7 2 5 9 0  
DATE JULY 1968

WATER DEPTH IN METRES 85 91 97 103 109 115 121 127 133 139 145 151 157 163 169



CS 2462

40

35

30

25

20

15

10

0.5

0.0

40

35

30

25

20

15

10

0.5

0.0