



THE AQUAPULSE SYSTEM

LINE: ES-220

S.P. 015D to S.P. 106

DATUM PLANE: SEA LEVEL

AGIP

AREA: SARDINIA-ASINARA

PROSPECT: ZONE "E"

WESTERN
GEOPHYSICAL
MILAN DIGITAL CENTER

RECORDING DATA

FACILITY NO. 82
ENERGY SOURCE AQUAPULSE
FILTER 10-80 HZ
CABLE 1800 m
GEOPHONES 32 CRYSTAL ELEMENT
TAPERED ARRAY
LEAD IN. 50.0 FT
AMPLIFIER MODEL BINARY GAIN
CHARGE SIZE 4 GUNS POP
DATE SHOT APRIL 1988

PROCESSING INFORMATION

DECONVOLUTION
DECONVOLVED BEFORE STACK
TIME VARIANT FILTER
TIME VARIANT
TIME ZONE HZ DB/OCT HZ DB/OCT
0.00 - 0.90 25 18 50 12
0.90 - 1.50 15 12 45 12
1.50 - 2.60 10 12 40 12
2.60 - 4.00 10 12 35 12

PROCESSING SEQUENCE

1) EDIT - SUM 3 POS
2) DECONVOLVED BEFORE STACK
3) NORMAL MOVE OUT
4) STACK 200%
5) TV-FILTER
6) FLANKBACK (UNFILTERED)
REFL. NO. 71940
DATE JULY 1988

M-MESA 5006

VELOCITY CHANGE

M-MESA 5023

VELOCITY CHANGE

M-MESA 5005

M-MESA 5019

VELOCITY CHANGE

M-MESA 5020

M-MESA 5020

M-MESA 5020

M-MESA 5020

M-MESA 5020

M-MESA 5020

M-MESA 5020

015D 09 03 4 10 16 22 28 34 40 46 52 58 64 70 76 82 88 94 100 106 WATER DEPTH IN METRES

M-MESA 5006

VELOCITY CHANGE

M-MESA 5023

VELOCITY CHANGE

M-MESA 5005

M-MESA 5019

VELOCITY CHANGE

M-MESA 5020

M-MESA 5020

M-MESA 5020

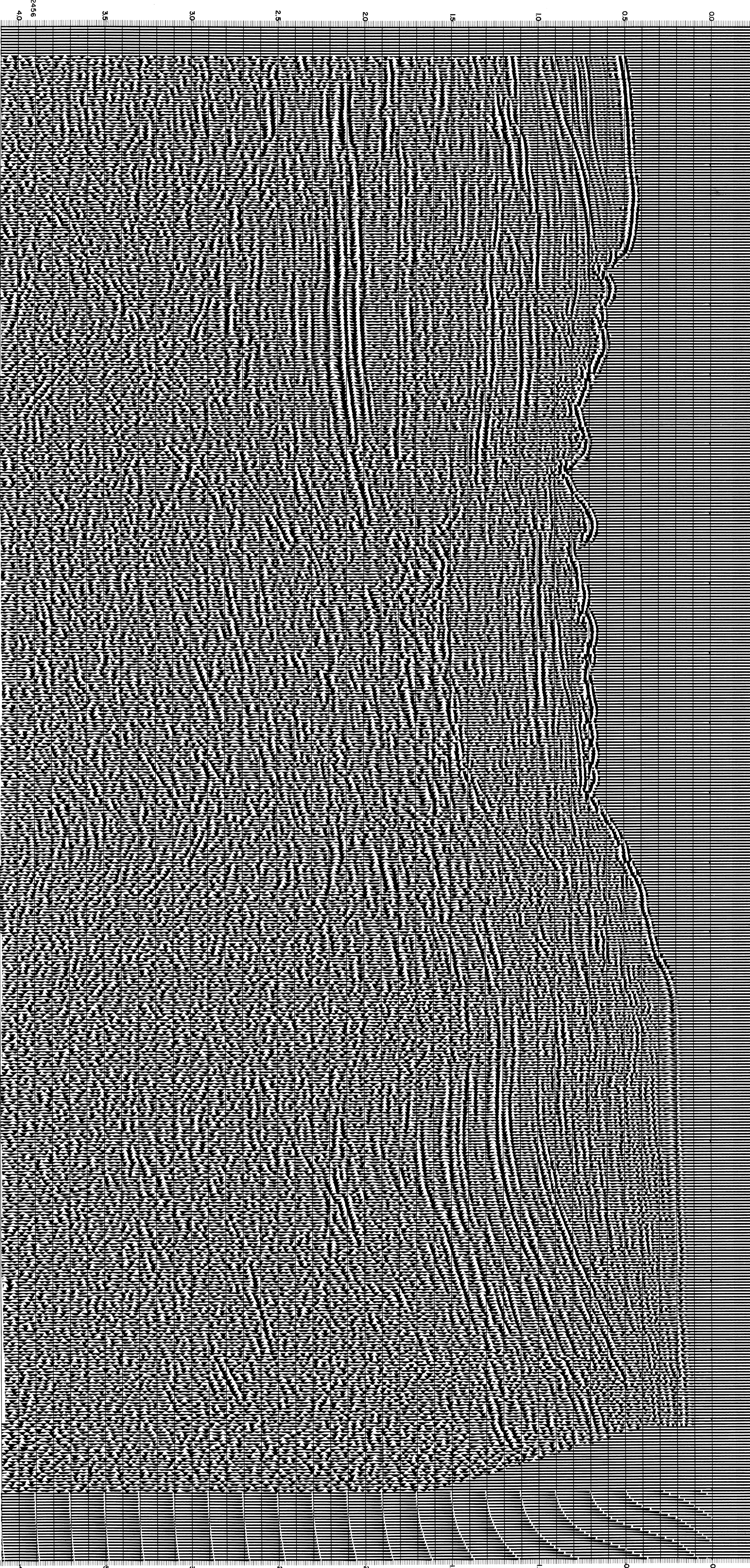
M-MESA 5020

M-MESA 5020

M-MESA 5020

M-MESA 5020

NORTHWEST



0.5 1.0 1.5 2.0 2.5 3.0 3.5 4.0

0.5 1.0 1.5 2.0 2.5 3.0 3.5 4.0

015D 09 03 4 10 16 22 28 34 40 46 52 58 64 70 76 82 88 94 100 106

015D 09 03 4 10 16 22 28 34 40 46 52 58 64 70 76 82 88 94 100 106

WATER DEPTH IN METRES

WATER DEPTH IN METRES

CS2456

CS2456