



THE AQUAPULSE SYSTEM

LINE: ES-218

S.P. 85 to S.P.163D

DATUM PLANE: SEA LEVEL

VELOCITY CHANGE

M-MESA 5010

M-MESA 5011

SOUTHEAST

RGIP

AREA: SARDINIA - ASINARA

PROSPECT: ZONE "E"

WESTERN
GEOPHYSICAL
DIVISION OF AMERICAN INDEPENDENT
MILAN DIGITAL CENTER

RECORDING DATA

PARTY NO. 62
ENERGY SOURCE AQUAPULSE
FILTER 10-80 HZ
CABLE 1600 m
GEOPHONES 32 CRYSTAL ELEMENT
TAPERED ARRAY
LEAD IN 650 FT.
AMPLIFIER REDCOR BINARY GAIN
CHARGE SIZE 4 GUNS POP
DATE SHOT APRIL 1968

PROCESSING INFORMATION

SAMPLE RATE 2 ms

DECONVOLUTION

DECONVOLVED BEFORE STACK

AUTO CORR INT TIME VARIANT
MAX APERTURE 0.920 ms
TIME ZONE 0-4.580
ITERATIONS 4

TIME VARIANT FILTER

TIME ZONE Hz DB OCT Hz DB OCT

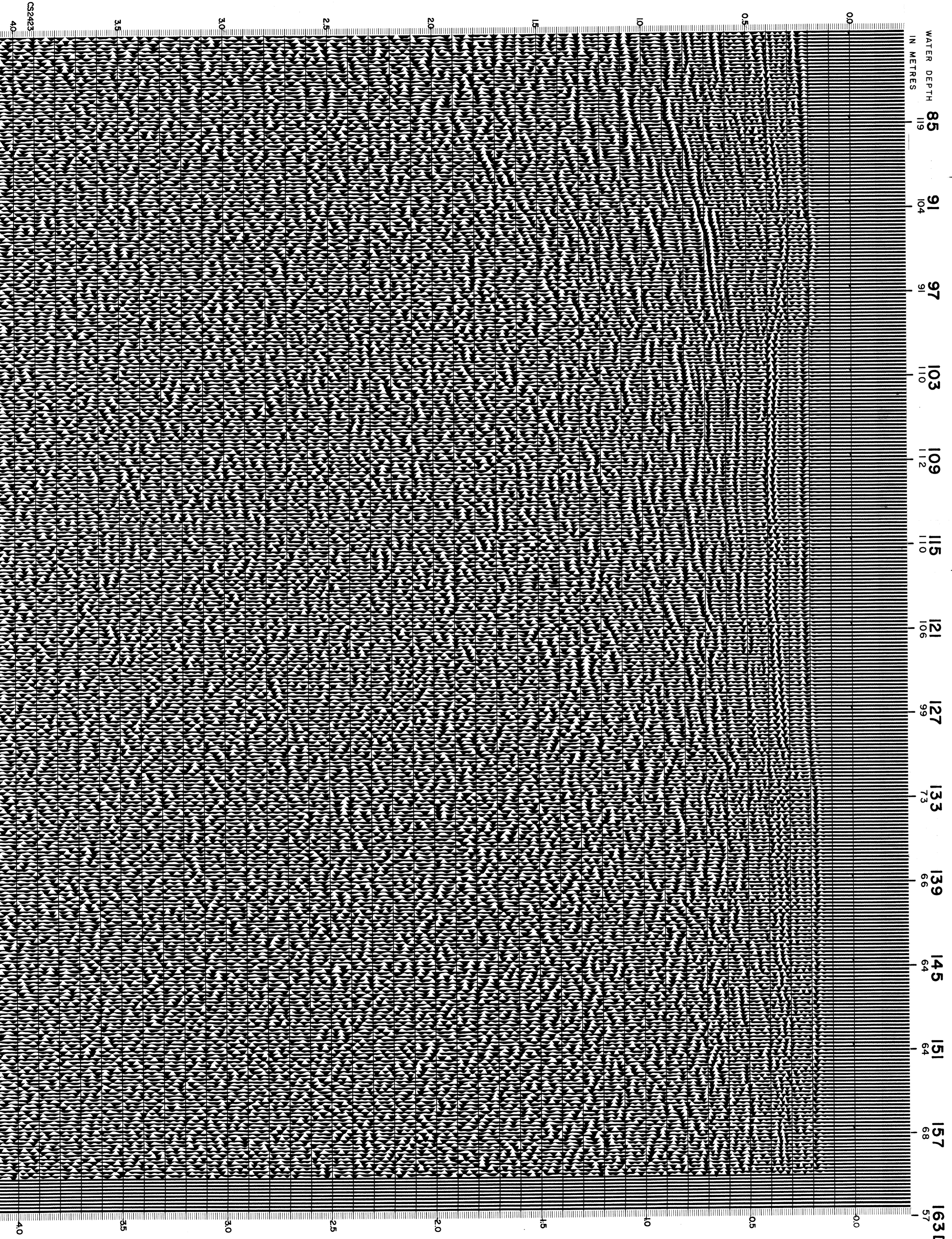
LC	HC
0.00 - 0.275	25 18 50 12
0.275 - 0.425	25 18 50 12
0.425 - 0.85	13 12 45 12
0.85 - 1.35	10 12 35 12
1.35 - 4.00	10 12 30 12

PROCESSING SEQUENCE

- 1) EDIT - (SUM 3 POPS)
- 2) DECONVOLVED BEFORE STACK
- 3) NORMAL MOVE OUT
- 4) STACK 1200%
- 5) TV-FILTER
- 6) PLAYBACK (UNFILTERED)

REEL NO 70 819
DATE JULY 1968

INTERSECTION
LINE S.P.
ES-125 10



CS2423

4.0