



THE AQUAPULSE SYSTEM

LINE : ES-131

S.P. 356 to S.P. 476D SOUTH

DATUM PLANE : SEA LEVEL

M-MESA 5030

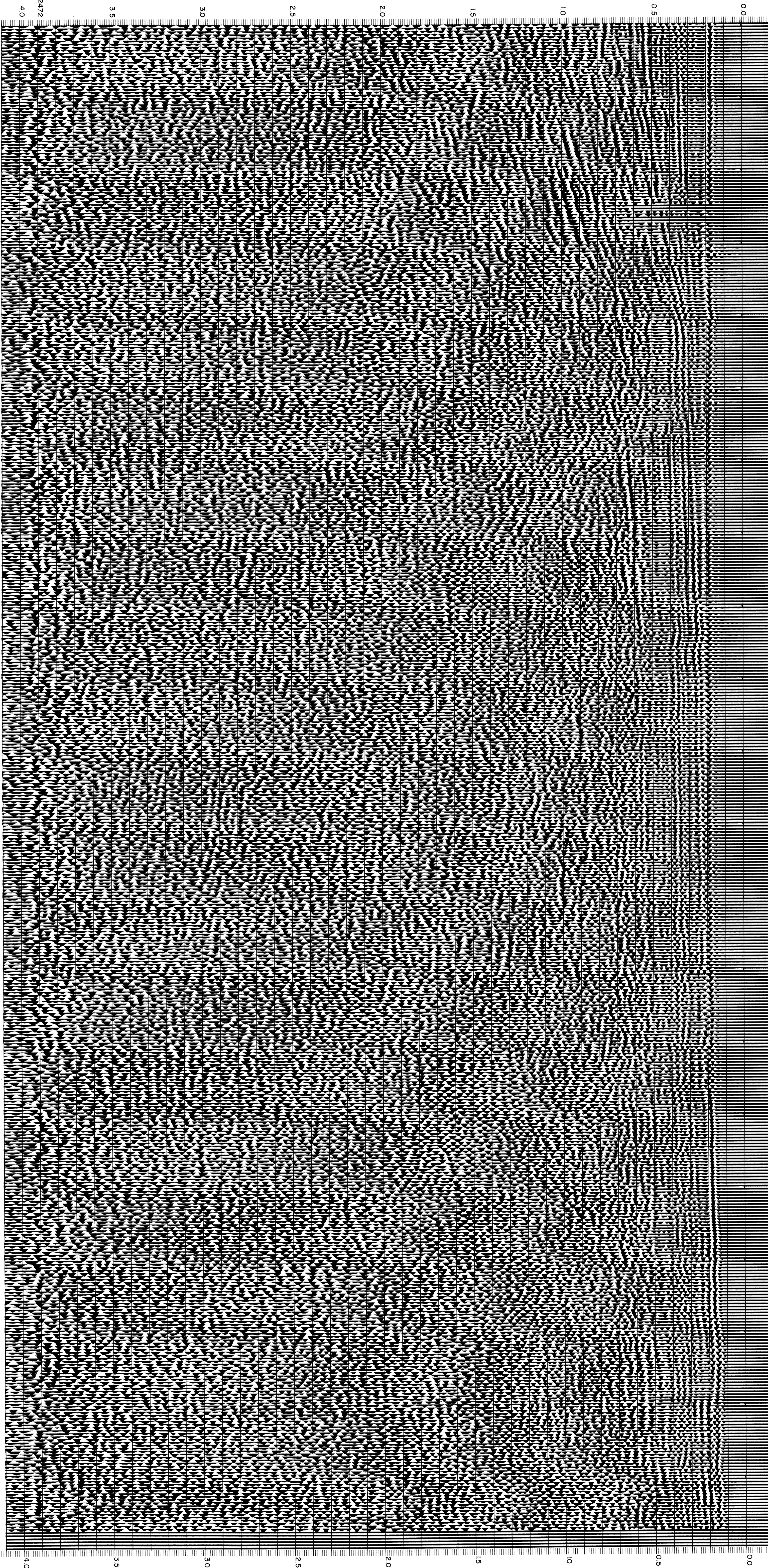
VELOCITY CHANGE

M-MESA 5015

VELOCITY CHANGE

M-MESA 5025

WATER DEPTH 356 362 368 374 380 386 392 398 404 410 416 422 428 434 440 446 452 458 464 470 476D
 IN METRES 62 62 62 66 66 66 68 69 71 73 73 73 69 68 66 64 60 59 53 48 1



AREA: SARDAINIA - ORISTANO

PROSPECT : ZONE "E"



WESTERN GEOPHYSICAL
DIVISION OF LITTON INDUSTRIES
MILAN DIGITAL CENTER

RECORDING DATA

PARTY NO. 62
 ENERGY SOURCE AQUAPULSE
 FILTER 10-80 HZ
 CABLE 1600 m
 GEOPHONES 32 CRYSTAL ELEMENT
 TAPERED ARRAY
 LEAD IN 650 FT
 AMPLIFIER RECORD BINARY GAIN
 CHANGE SIZE 4 GUNS POP
 DATE SHOT APRIL 1988

PROCESSING INFORMATION

DECONVOLUTION
 DECONVOLVED BEFORE STACK
 AUTO CORR. INT TIME VARIANT
 MAX APERTURE 0-360MS
 TIME ZONE 0-4 SEC
 ITERATIONS 4

TIME VARIANT FILTER
 TIME ZONE Hz DB OCT Hz DB OCT
 L.C. H.C.
 000-040 25 18 50 12
 040-105 15 18 45 12
 105-150 10 12 40 12
 150-400 5 12 30 12

PROCESSING SEQUENCE

- 1) EDIT - (SUM 3 POPS)
 - 2) DECONVOLVED BEFORE STACK
 - 3) NORMAL MOVE OUT
 - 4) STACK 1200%
 - 5) TV FILTER (F-X)
 - 6) PLAYBACK (UNFILTERED)
- REFL. NO. 72619
 DATE JULY 1988

CS 2472

40

40