



THE AQUAPULSE SYSTEM

LINE: ES-131

S.P. 236 to S.P. 350

DATUM PLANE: SEA LEVEL



AREA: SARDINIA - ORISTANO

PROSPECT: ZONE "E"



WESTERN GEOFYSICAL
DIVISION OF DIGITAL CENTER
MILANO

RECORDING DATA		PROCESSING		INFORMATION		PROCESSING SEQUENCE	
PARTY NO.	62	SAMPLE RATE 2 ms		TIME VARIANT FILTER		1) EDIT - (SUM 3 POPS) 2) DECONVOLVED BEFORE STACK 3) NORMAL MOVE OUT 4) STACK 1200% 5) TV FILTER 6) PLAYBACK (UNFILTERED)	
ENERGY SOURCE	AQUAPULSE	DECONVOLUTION		L.C. H.C.		REEL NO. 72619	
FILTER	10-80 HZ	DECONVOLVED BEFORE STACK		TIME ZONE Hz DB OCT Hz DB OCT		DATE JULY '88	
CABLE	1800m	AUTO CORR. INT.		020 - 040 25 18 50 12			
GEOPHONES	32 CRYSTAL ELEMENT	MAX APERTURE		040 - 105 15 18 45 12			
	TAPERED ARRAY	TIME ZONE		105 - 190 10 12 40 12			
		ITERATIONS		190 - 400 5 12 30 12			
LEAD IN	650FT						
AMPLIFIER RECORD	BINARY GAIN						
CHARGE SIZE	4 GUNS POP						
DATE SHOT	APRIL '88						

SOUTH

VELOCITY CHANGE

M-MESA 5024

VELOCITY CHANGE

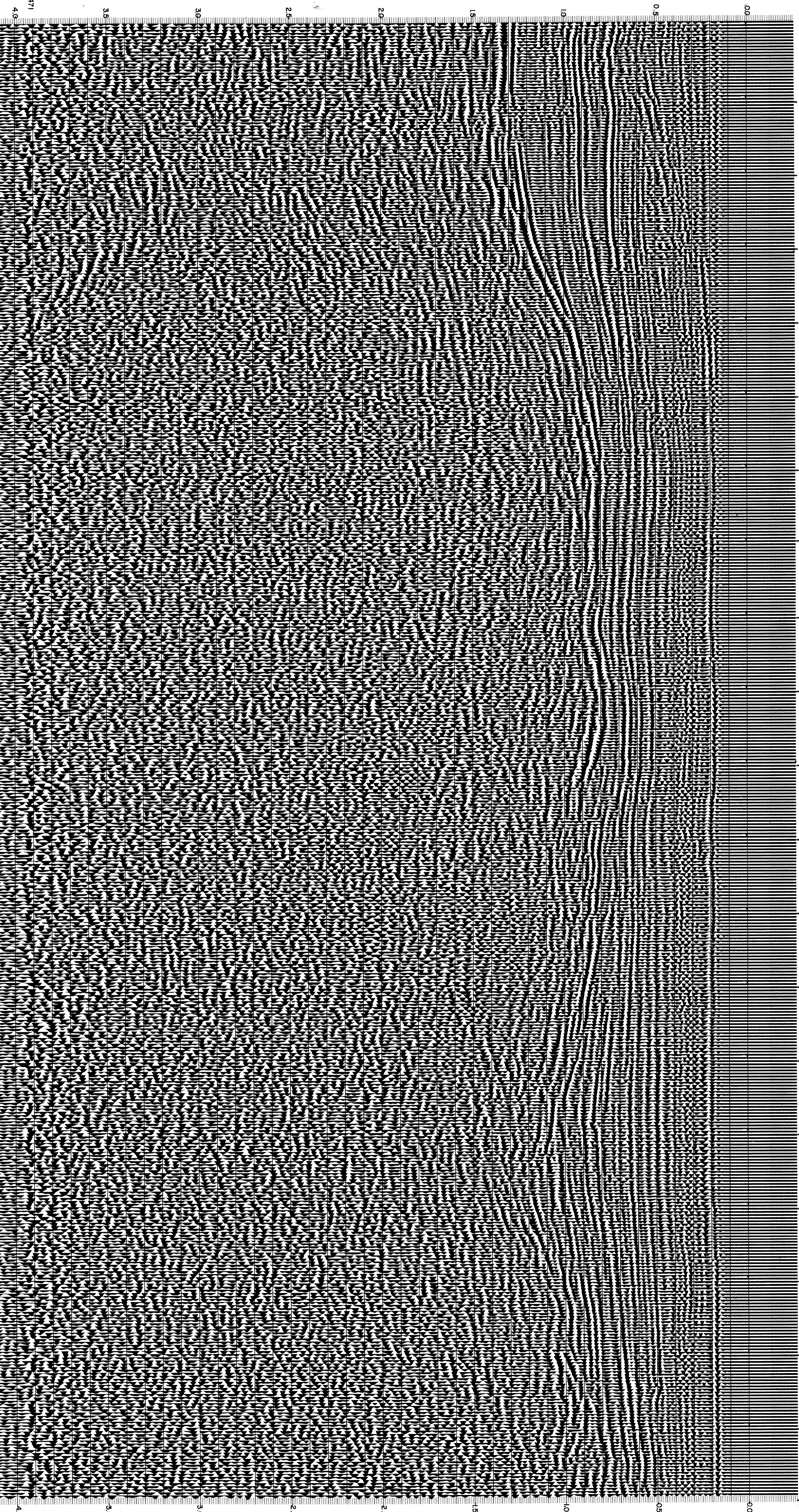
M-MESA 5030

INTERSECTION LINE S.P. 94

WATER DEPTH 236 242 248 254 260 266 272 278 284 290 296 302 308 314 320 326 332 338 344 350

IN METRES 48 48 49 49 51 49 51 51 51 57 55 51 53 53 53 51 51 57 59 59

INTERSECTION LINE S.P. 24



CS 2471