



THE AQUAPULSE SYSTEM

LINE: ES-131

S.P. 116 to S.P. 230

DATUM PLANE: SEA LEVEL

SOUTH



AREA: SARDINIA-ORISTANO

PROSPECT: ZONE 1E



WESTERN GEOPHYSICAL MILAN DIGITAL CENTER

RECORDING DATA		PROCESSING INFORMATION		PROCESSING SEQUENCE	
PARTY NO. 62	ENERGY SOURCE AQUAPULSE	SAMPLE RATE 2 MS		1) EDIT - (SUM 3 POPS)	
FILTER 10-80 HZ	CABLE 1600 m	DECONVOLUTION		2) DECONVOLVED BEFORE STACK	
GEOPHONES 32 CRYSTAL ELEMENT	LEAD IN TAPERED ARRAY	DECONVOLVED BEFORE STACK		3) NORMAL MOVE OUT	
AMPLIFIER RECORR BINARY GAIN	LEAD IN 650. FT.	TIME VARIANT		4) STACK 1200%	
CHARGE SIZE 4 GUNS POP	AMP. RECORR BINARY GAIN	AUTO CORR INT	TIME VARIANT	5) T.V. FILTER	
DATE SHOT APRIL 1968	CHARGE SIZE 4 GUNS POP	MAX APERTURE	MAX APERTURE	6) PLAYBACK (UNFILTERED)	
	DATE SHOT APRIL 1968	ITERATIONS	ITERATIONS	REL. NO. 72619	
				DATE JULY 1968	

M-MESA 5025 VELOCITY CHANGE

WATER DEPTH 116 122 128 134 140 146 152 158 164 170 176 182 188 194 200 206 212 218 224 230

IN METRES 22 22 27 33 38 40 37 37 29 33 35 35 38 40 42 42 42 44 44 46

M-MESA 5015

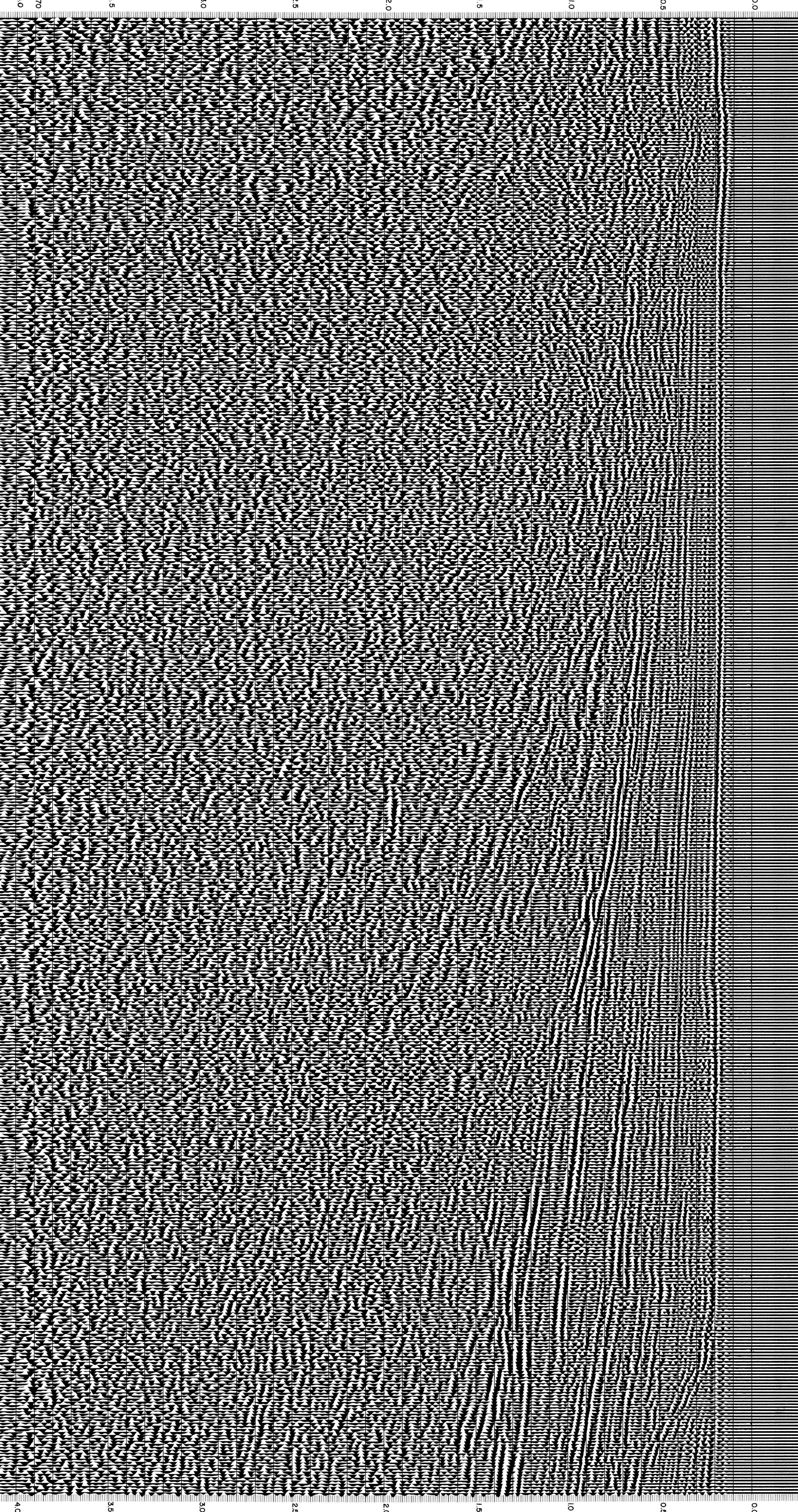
VELOCITY CHANGE

M-MESA 5020 VELOCITY CHANGE

M-MESA 5030 VELOCITY CHANGE

M-MESA 5030 VELOCITY CHANGE

M-MESA 5011



0.0
0.5
1.0
1.5
2.0
2.5
3.0
3.5
4.0

CS 2470