



THE AQUAPULSE SYSTEM

LINE: ES-131

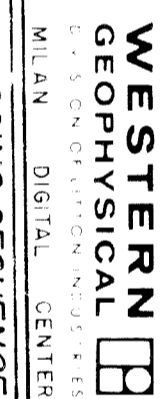
S.P. 04 to S.P. 110

DATUM PLANE: SEA LEVEL



AREA: SARDINIA - ORISTANO

PROSPECT: ZONE "E"



RECORDING DATA		PROCESSING		INFORMATION		PROCESSING SEQUENCE	
START NO.	62	SAMPLE RATE: 4 ms		TIME VARIANT FILTER		1) EDIT - (SUM 3 REPS)	
ENERGY SOURCE	AQUAPULSE	DECONVOLUTION		TIME ZONE		2) DECONVOLVED BEFORE STACK	
FILTER	0-300 Hz	DECONVOLVED BEFORE STACK		LC		3) NORMAL WAVE CUT	
CABLE	1600 m	TIME VARIANT		HC		4) STACK (200%)	
GEOPHONES	32 CRYSTAL ELEMENT	WAX APERTURE		000 - 040		5) TV-FILTER	
	TAPERED ARRAY	TIME ZONE		040 - 105		6) PLAYBACK (UNFILTERED)	
	690 FT	ITERATIONS		105 - 190			
AMPLIFIER RECORD	BINARY GAIN			190 - 400			
CHARGE SIZE	4 GUNS POP						
DATE SHOT	APRIL '68					REFL. NO. 72619	
						DATE JULY '68	

SOUTH

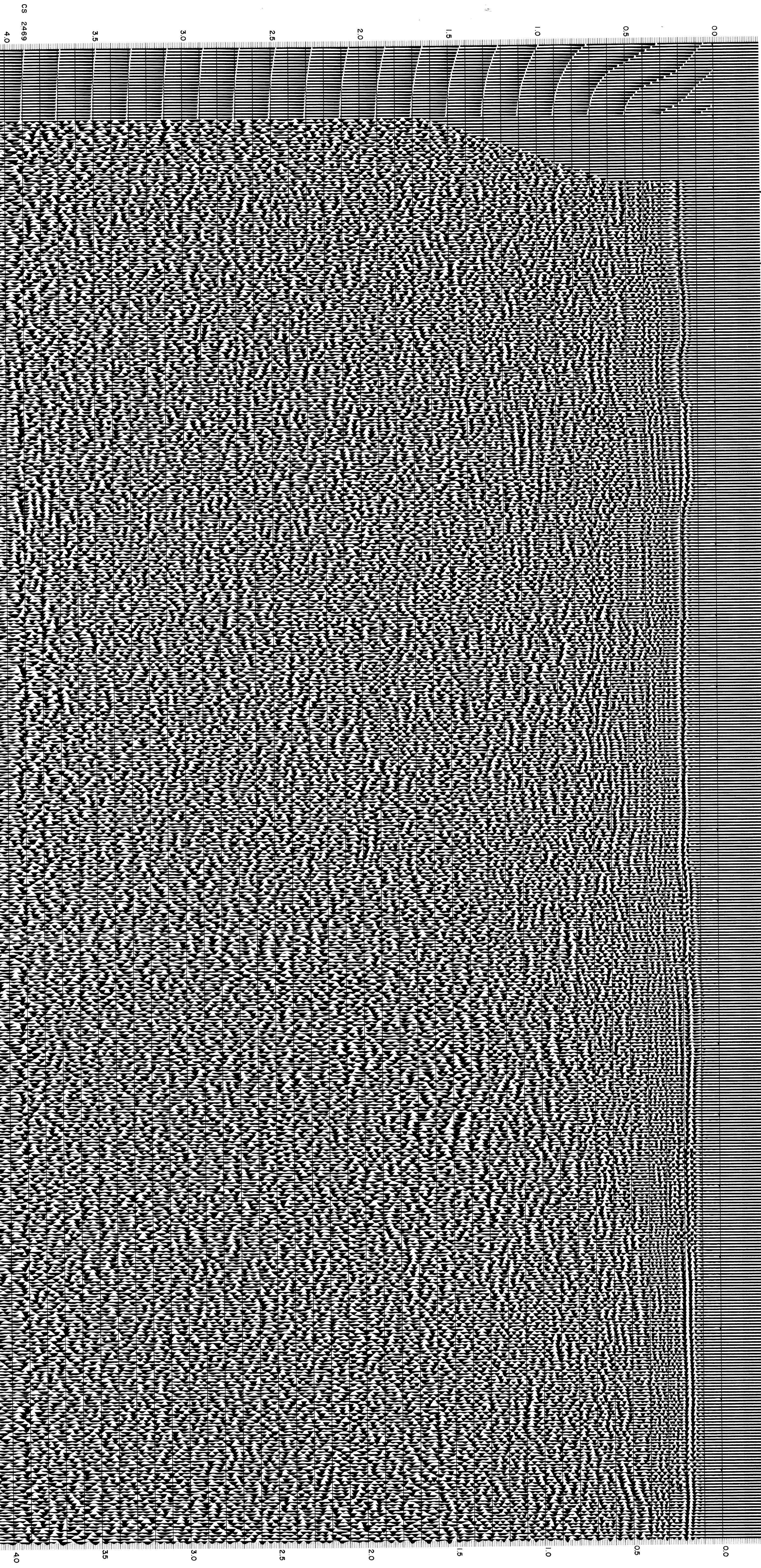
VELOCITY CHANGE

M-MESA 5025

INTERSECTION LINE ES 230 14 71 20 26 32 38 44 50 56 62 68 74 80 86 92 98 104 110

S.P. 04 2 8 14 20 26 32 38 44 50 56 62 68 74 80 86 92 98 104 110

M-MESA 5038 69 69 68 62 57 33 31 29 29 22 22 20 20 20



CS 2469

4.0

3.5

3.0

2.5

2.0

1.5

1.0

0.5

0.0

3.5

3.0

2.5

2.0

1.5

1.0

0.5

0.0

4.0