



THE AQUAPULSE SYSTEM

LINE: ES-127

S.P. 237 to S.P. 351

SOUTH

DATUM PLANE: SEA LEVEL

INTERSECTION  
LINE ES-236 S.P. 234 M-MESA 5020

VELOCITY CHANGE  
M-MESA 5001 M-MESA 5003

VELOCITY CHANGE  
M-MESA 5037

VELOCITY CHANGE  
M-MESA 5039

VELOCITY CHANGE  
M-MESA 5039

INTERSECTION  
LINE ES-239 S.P. 357

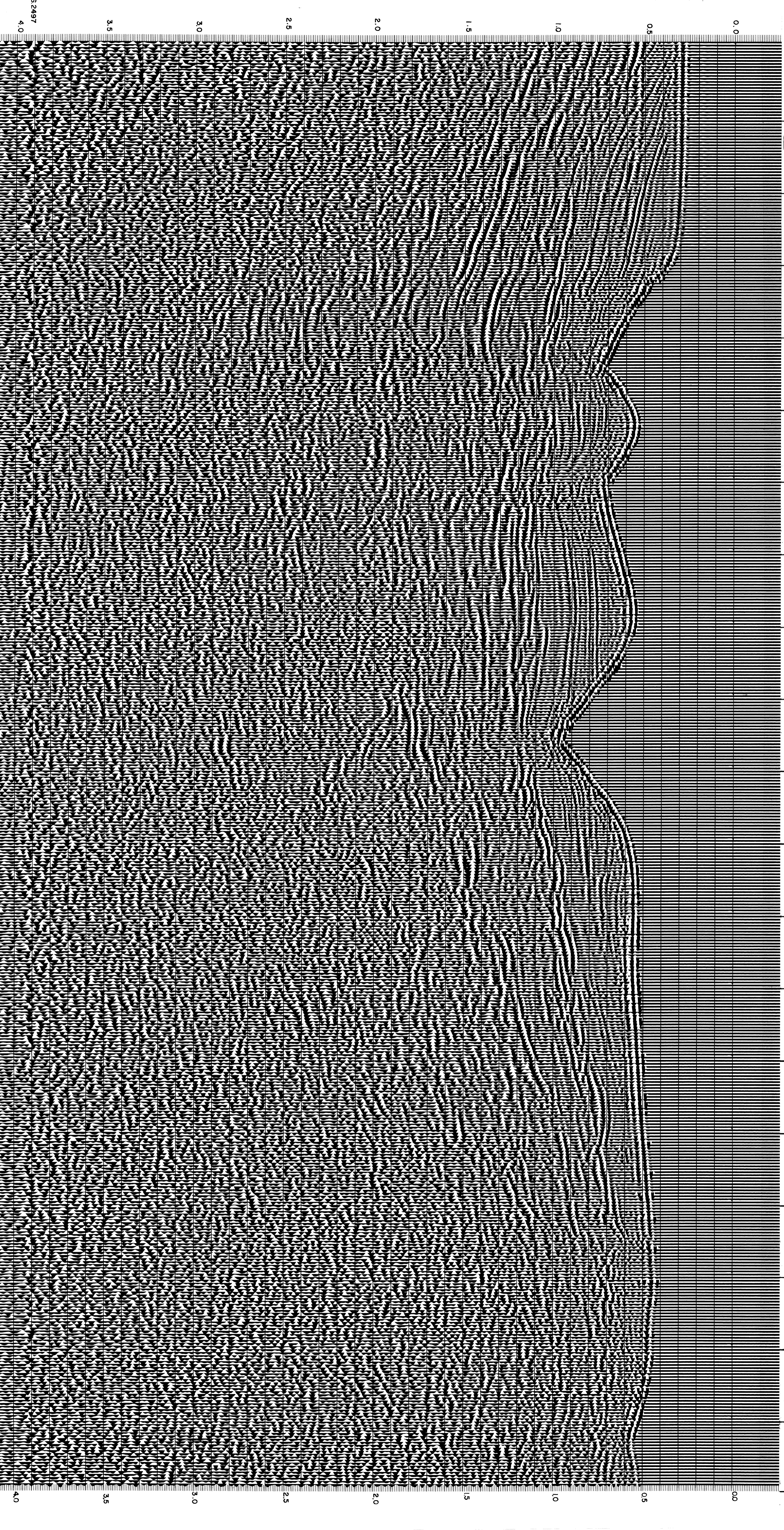
VELOCITY CHANGE  
M-MESA 5001

VELOCITY CHANGE  
M-MESA 5001

VELOCITY CHANGE  
M-MESA 5001

VELOCITY CHANGE  
M-MESA 5001

WATER DEPTH 237 243 249 255 261 267 273 279 285 291 297 303 309 315 321 327 333 339 345 351  
IN METRES 188 183 280 448 375 489 417 366 3512 3512 375 357 357 335 320 298 278 293 357 336



AREA: SARDINIA - ORISTANO

PROSPECT: ZONE "E"

WESTERN  
GEOPHYSICAL  
DIVISION OF LITTON INDUSTRIES  
MILAN DIGITAL CENTER

**RECORDING DATA**

PARTY NO. 62  
ENERGY SOURCE AQUAPULSE  
FILTER 10-80 Hz  
CABLE 1800 m  
GEOPHONES 32 CRYSTAL ELEMENT  
TAPERED ARRAY  
LEAD IN 6.50 FT  
AMPLIFIER RECORD BINARY GAIN  
CHARGE SIZE 4 GUNS POP  
DATE SHOT APRIL 1968

**PROCESSING INFORMATION**

DECONVOLUTION  
SAMPLE RATE 2 ms

DECONVOLVED BEFORE STACK  
AUTO CORR. INT. TIME VARIANT  
MAX APERTURE 0 - 520. ms  
TIME ZONE 0 - 4 sec  
ITERATIONS 4

**TIME VARIANT FILTER**

TIME ZONE	Hz	DB OCT	Hz	DB OCT
0.00	0.45	28	18	55
0.45	0.60	15	18	50
0.60	4.00	5	12	35
			12	12

**PROCESSING SEQUENCE**

- 1) EDIT - (SUM 3 POPS)
- 2) DECONVOLVED BEFORE STACK
- 3) NORMAL MOVE OUT
- 4) STACK 1200%
- 5) TV FILTER
- 6) PLAYBACK (UNFILTERED)

REFL. NO. 72 335  
DATE JULY 1968

CS 2497  
4.0  
3.5  
3.0  
2.5  
2.0  
1.5  
1.0  
0.5  
0.0