

THE AQUAPULSE SYSTEM

LINE: ES-127

S.P. 117 to S.P. 231

SOUTH

DATUM PLANE: SEA LEVEL

VELOCITY CHANGE

M-MESA 5040

M-MESA 5017

M-MESA 5016

M-MESA 5012

M-MESA 5006

M-MESA 5032

M-MESA 5002

M-MESA 5020

M-MESA 5020

M-MESA 5020

M-MESA 5020

M-MESA 5020

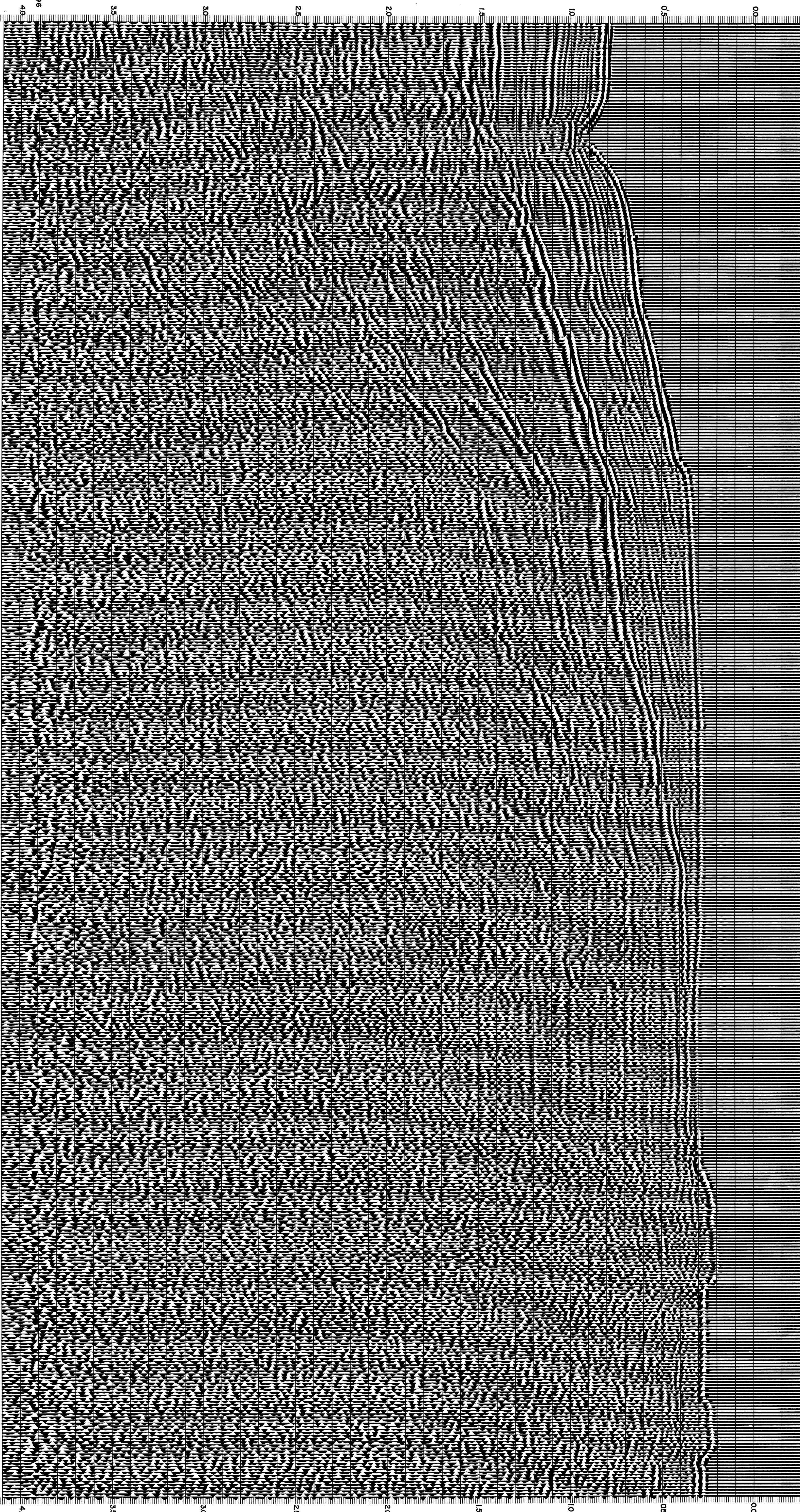
M-MESA 5020

M-MESA 5020

M-MESA 5020

M-MESA 5020

117 123 129 135 141 147 153 159 165 171 177 183 189 195 201 207 213 219 225 231



RGIP AREA: SARDINIA-ORISTANO PROSPECT: ZONE "E"		WESTERN GEOPHYSICAL DIVISION OF UNION INDUSTRIES MILAN DIGITAL CENTER													
RECORDING DATA PARTY NO. 62 ENERGY SOURCE AQUAPULSE FILTER 10-80 HZ CABLE 1600 m GEOPHONES 32 CRYSTAL ELEMENT TAPERED ARRAY LEAD IN 6.90 FT AMPLIFIER RECORD BINARY GAIN CHARGE SIZE 4 GUNS POP DATE SHOT APRIL 1988		PROCESSING INFORMATION SAMPLE RATE 2 ms DECONVOLUTION DECONVOLVED BEFORE STACK AUTO CORR. INT. TIME VARIANT MAX APERTURE 0-520m TIME ZONE 0-4.38s ITERATIONS 4 TIME VARIANT FILTER <table border="1"> <tr> <td>LC</td> <td>HC</td> </tr> <tr> <td>100-480</td> <td>25-18</td> </tr> <tr> <td>450-600</td> <td>15-18</td> </tr> <tr> <td>600-800</td> <td>50-12</td> </tr> <tr> <td>800-900</td> <td>5-12</td> </tr> <tr> <td></td> <td>35-12</td> </tr> </table>		LC	HC	100-480	25-18	450-600	15-18	600-800	50-12	800-900	5-12		35-12
LC	HC														
100-480	25-18														
450-600	15-18														
600-800	50-12														
800-900	5-12														
	35-12														
PROCESSING SEQUENCE 1) EDIT - (SUM 3 POPS) 2) DECONVOLVED BEFORE STACK 3) NORMAL MOVE OUT 4) STACK 1200% 5) TV FILTER 6) PLAYBACK (UNFILTERED)		REEL NO. 72335 DATE JUL 1988													

CS2496

40