



THE AQUAPULSE SYSTEM

LINE: ES-125

S.P. 174 to S.P. 84

DATUM PLANE: SEA LEVEL

M-MESA 5020

VELOCITY CHANGE

INTERSECTION  
LINE ES-222  
S.P. 82



AREA: SARDINIA-ASINARA

PROJECT: ZONE "E"

WESTERN  
GEOPHYSICAL  
DIVISION  
MILAN DIGITAL CENTER

RECORDING DATA

PARTY NO. 82  
ENERGY SOURCE AQUAPULSE  
FILTER 10-80 HZ  
CABLE 1600 m  
GEOPHONES 32 CRYSTAL ELEMENT  
TAPERED ARRAY  
LEAD IN 650 FT  
AMPLIFIER RECOR BINARY GAIN  
CHARGE SIZE 4 GUNS POP  
DATE SHOT APRIL 1969

PROCESSING INFORMATION

SAMPLE RATE 6 ms

DECONVOLUTION

DECONVOLVED BEFORE STACK

AUTO CORR INT  
MAX APERTURE 0-360 ms  
TIME ZONE 0-4 sec  
ITERATIONS 4

TIME VARIANT FILTER

TIME ZONE Hz DB OCT Hz DB OCT

0.00 - 0.40 25 18 50 12  
0.40 - 0.65 15 12 45 12  
0.65 - 1.90 10 12 40 12  
1.90 - 4.00 10 12 35 12

PROCESSING SEQUENCE

- 1) EDIT (SUM 3 POPS)
- 2) DECONVOLVED BEFORE STACK
- 3) NORMAL MOVE OUT
- 4) STACK (200%)
- 5) TV-FILTER
- 6) PLAYBACK (UNFILTERED)

REFL NO. 72621  
DATE JUNE 1968

M-MESA 5014

VELOCITY CHANGE

M-MESA 5011

VELOCITY CHANGE

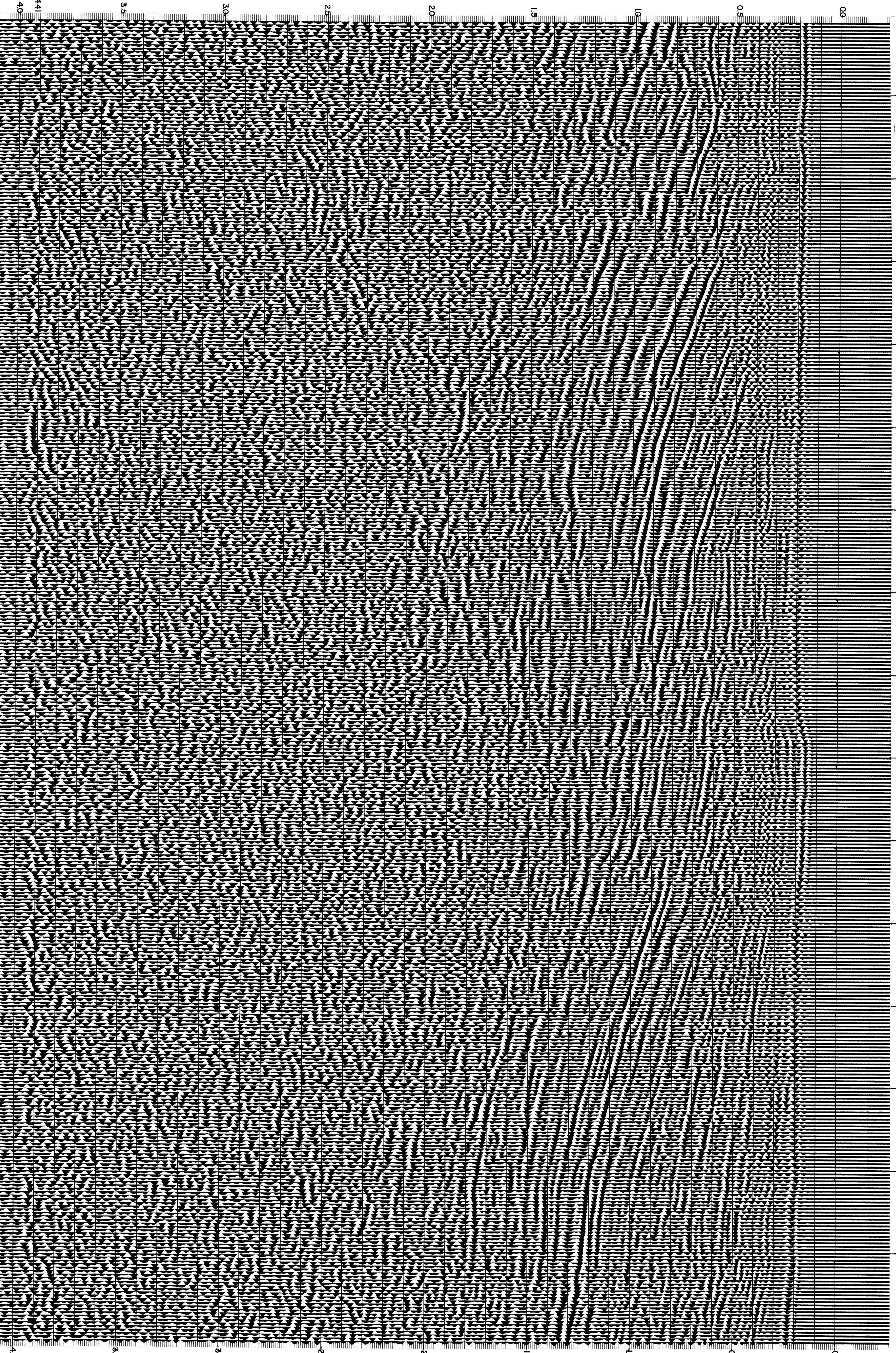
INTERSECTION  
LINE ES-220  
S.P. 79

SOUTH WEST

M-MESA 5002

174 168 162 156 150 144 138 132 126 120 114 108 102 96 90 84

WATER DEPTH  
IN METRES



CS244

40

35

30

25

20

15

10

0.5

0.0

40

35

30

25

20

15

10

0.5

0.0