



THE AQUAPULSE SYSTEM

LINE: ES-125

S.P. 78 to S.P. 07

DATUM PLANE: SEA LEVEL

VELOCITY CHANGE

M-MESA 5002

130

78 72

137

66

60

54

48

42

36

30

24

18

12

6

01

07

62

WATER DEPTH
IN METRES



AREA: SARDINIA - ASINARA

PROSPECT: ZONE "E"



WESTERN
GEOPHYSICAL
CORPORATION
MILAN, ITALY

RECORDING DATA

ADPT. NO. 62
ENERGY SOURCE AQUAPULSE
FILTER 10-80 HZ
CABLE 1600 m
GEOPHONES 32 CRYSTAL ELEMENT
TAPERED ARRAY
LEAD IN. 650 FT
AMPLIFIER RECORD BINARY GAIN
CHANGE SIZE 4 GUNS POP
DATE SHOT APRIL 1968

PROCESSING INFORMATION

SAMPLE RATE 4 MS

DECONVOLUTION

DECONVOLVED BEFORE STACK

AUTO CORR INT
MAX APERTURE
TIME ZONE
ITERATIONS

TIME VARIANT FILTER

TIME ZONE

0.00 - 0.40 25 18 50 12
0.40 - 0.65 15 12 45 12
0.65 - 1.90 10 12 40 12
1.90 - 4.00 10 12 35 12

PROCESSING SEQUENCE

- 1) EDIT - SUM 3 POS(S)
- 2) DECONVOLVED BEFORE STACK
- 3) NORMAL NOISE CUT
- 4) STACK 120%
5) TV-FILTER
- 6) PLAYBACK (UNFILTERED)

REFL NO. 7 2 6 2 1
DATE JULY 1968

VELOCITY CHANGE

M-MESA 5014

119

110

86

84

95

69

68

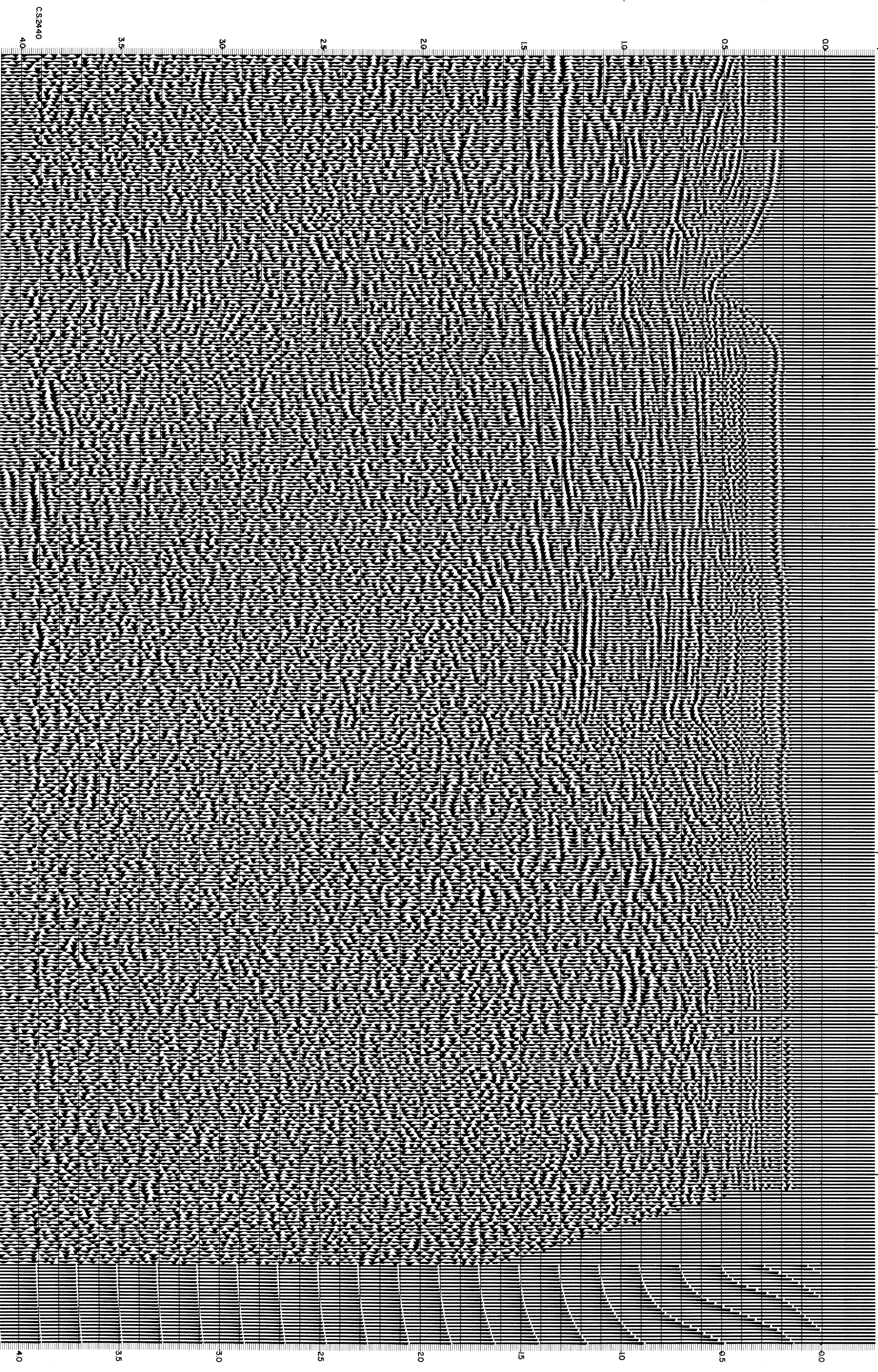
64

62

62

INTERSECTION
LINE S.P.
ES-218 146

SOUTHWEST



CS2440

40

35

30

25

20

15

10

05

00