

AREA: MARE TIRRENO PROSPECT: ZONE "E"

WESTERN GEOPHYSICAL  
DIVISION OF LITTON INDUSTRIES  
MILAN DIGITAL CENTER

**RECORDING DATA**

PARTY NO. 62  
 ENERGY SOURCE AQUAPULSE  
 FILTER 10-80 HZ  
 CABLE 1600 m  
 GEOPHONES 32 CRYSTAL ELEMENT  
 TAPERED ARRAY  
 LEAD IN 700 FT.  
 AMPLIFIER REDCOR BINARY GAIN  
 CHARGE SIZE 4 GUNS POP  
 DATE SHOT APRIL 1968

**PROCESSING INFORMATION**  
SAMPLE RATE 2 ms

DECONVOLUTION		TIME VARIANT FILTER	
DECONVOLVED BEFORE STACK		LC	HC
TIME ZONE	Hz	dB	OCT
0.0 - 0.330	20 - 18	50 - 12	
0.330 - 0.430	20 - 18	45 - 12	
0.430 - 1.350	15 - 12	40 - 12	
1.350 - 2.100	10 - 12	35 - 12	
2.100 - 4.000	5 - 12	30 - 12	

AUTO CORR INT TIME VARIANT  
 MAX APERTURE 0 - 360 ms  
 TIME ZONE 0 - 4 sec  
 ITERATIONS 3

**PROCESSING SEQUENCE**

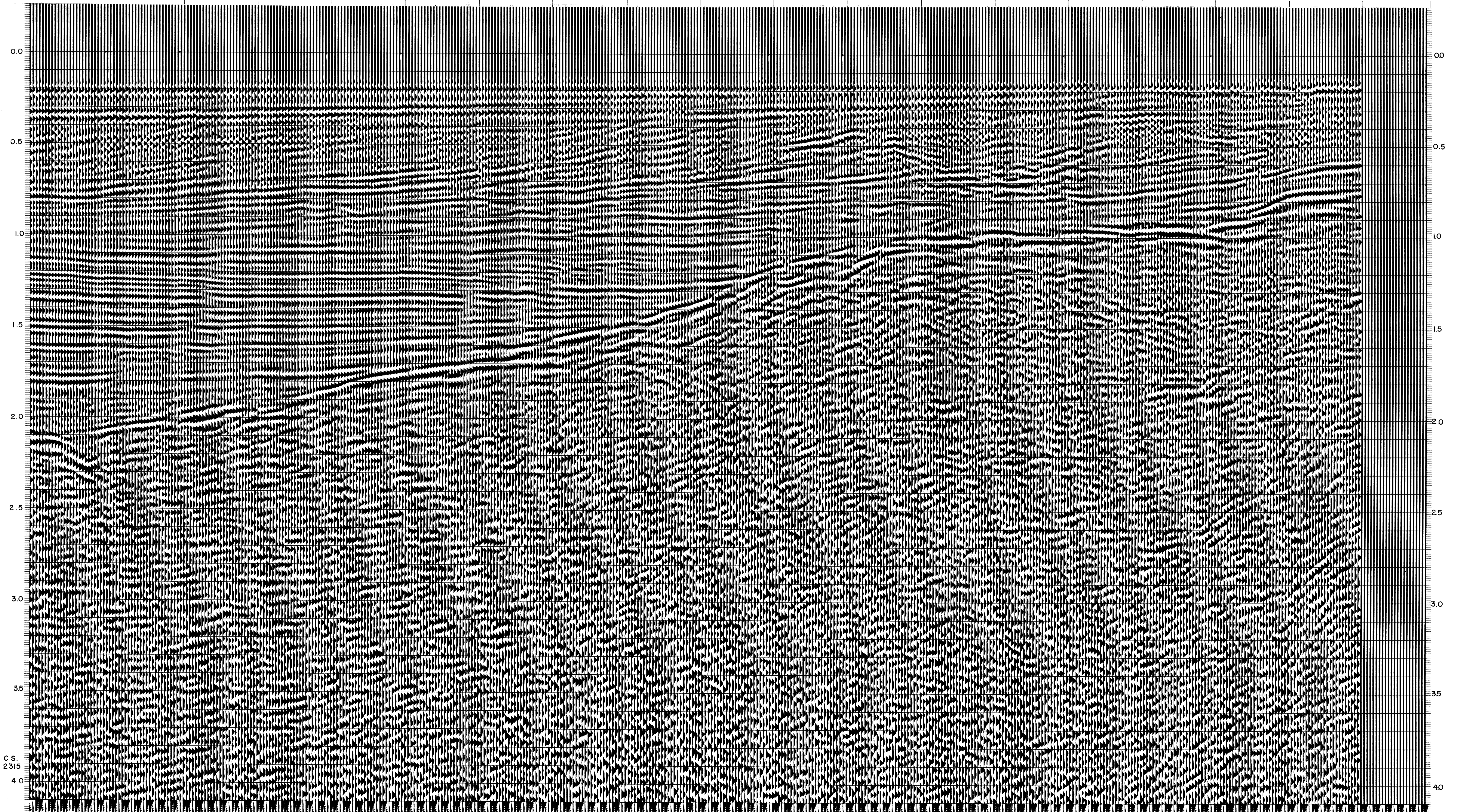
- 1) EDIT - (SUM 3 POPS)
- 2) DECONVOLVED BEFORE STACK
- 3) NORMAL MOVE OUT
- 4) STACK 1200%
- 5) T.V. FILTER
- 6) PLAYBACK (UNFILTERED)

REEL NO. 72349  
 DATE JUNE 1968

LINE: 180  
 S.P. 115 to S.P. 223AD  
 DATUM PLANE: SEA LEVEL  
 NORTH

INTERSECTION LINE S.P. 109 2204  
 M-ITMS 5721  
 VELOCITY CHANGE M-ITMS 5722  
 VELOCITY CHANGE M-ITMS 5723  
 INTERSECTION LINE S.P. 101 S.R. 1620A  
 INTERSECTION LINE S.P. 101 S.R. 1620  
 VELOCITY CHANGE M-ITMS 5724

WATER DEPTH IN METRES: 115 (102), 121 (101), 127 (97), 133 (95), 139 (91), 145 (91), 151 (86), 157 (82), 163 (80), 169 (77), 175 (73), 181 (69), 187 (68), 193 (59), 199 (46), 205 (38), 211 (31), 217 (24), 223AD



C.S. 2315