

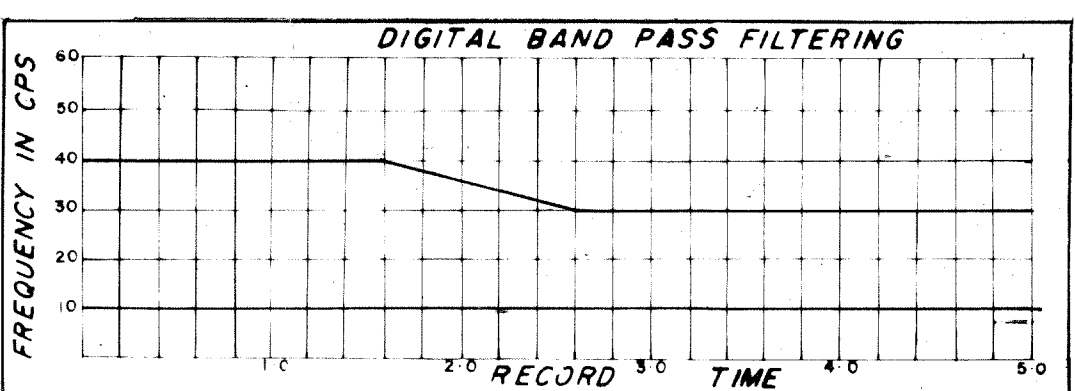
SHOOTING PARAMETERS
 6-Fold Off End
 Shot by GSI PTY 910
 Cable Length 1600 m
 Group Interval 67 m
 Shot Point Interval 134 m
 Average Shot Offset 134m
 Charge Size 50 lb
 Average Seis. Depth 13 m

RECORDING PARAMETERS
 System 9,000
 Record Length 5.0 secs.
 Sample 2 ms
 GAGC Trip 0.64 Rate 80 db/s
 Init 33 db Final 100 db
 Filters Hi 75 cps 24 db/oct
 Lo 8 cps 24 db/oct
 2ms Anti Alias Filtering

SEIS EDIT & NMO
 TAR
 $\omega = 4.0$ db/sec
 $F_{75} = 0$ sec to 4.0 sec
 Water Velocity 1500 mps
 Replacement Vel. 1500 mps

DECONVOLUTION
 Time variant ARD
 Filter Length 252 msec
 Gate Length 2600 msec
 No of Gates/Trace 7
 Initial times, Gate No 1 :-
 Tr 1: 1 sec, Tr 2: 4.0 sec
 Final times, Gate No 1 :-
 Tr 1: 3.7 sec, Tr 2: 4.3 sec

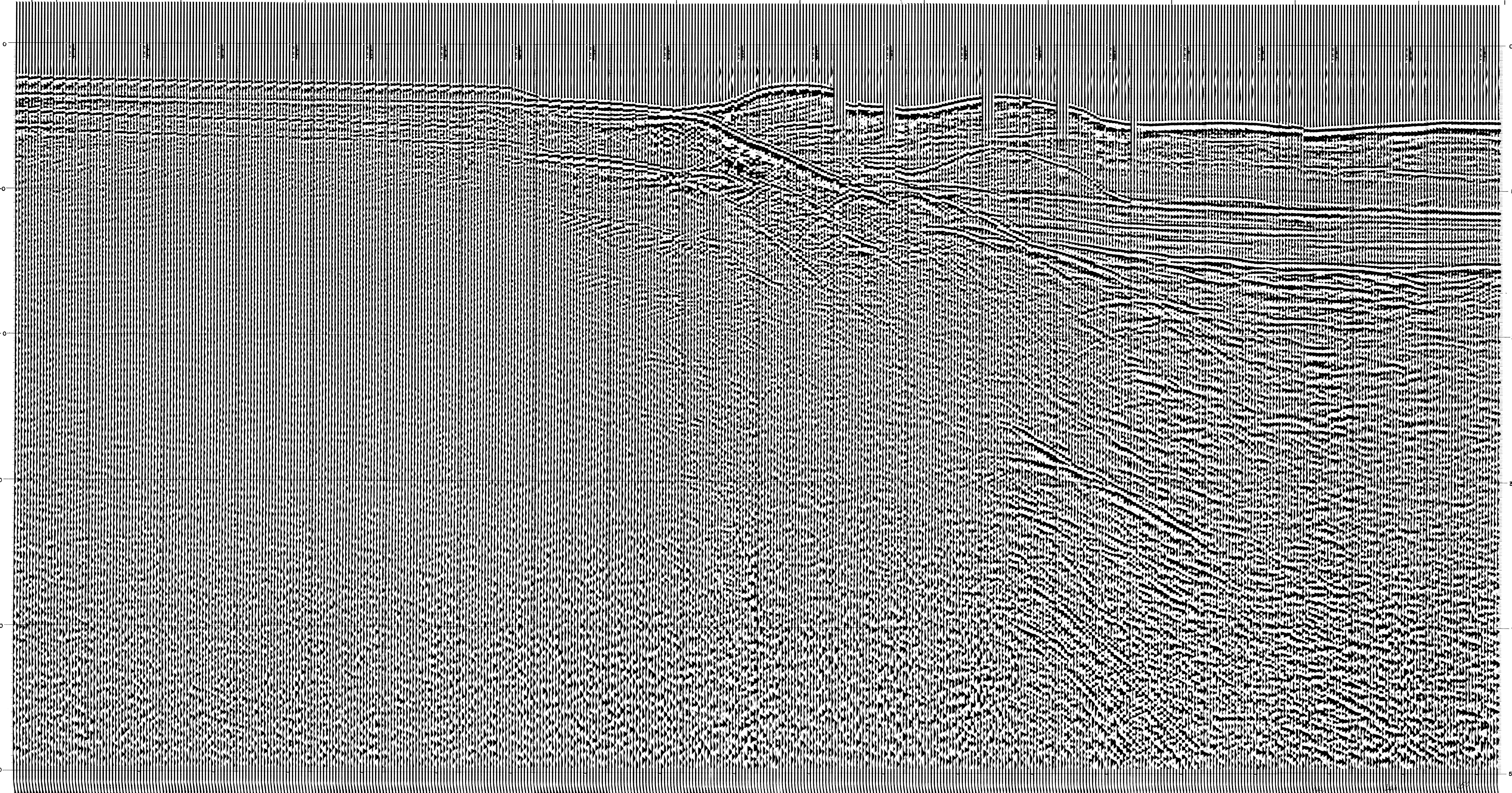
6-FOLD STACK
 Optimum Wide Band Stack
 RNMO Yes, Diversity Stack Yes
 First Break Suppression
 $T_1: 0$ sec $T_2: 1.0$ sec
 $T_3: 0.8$ sec $T_4: 1.2$ sec
 $T_5: 0.8$ sec $T_6: 1.4$ sec



DISPLAY	REQ. N°	L-2519
Analog Filters OUT-OUT	Section N°	4197C
Straight Gain +12 + 2 -20 = -6	System Code	MSTV-2
Tape HTL 4356	Assembled by	<i>K. S. ...</i>
HTL	Checked by	<i>K. S. ...</i>

156 Meters 162 171 182 218 295 171 286 281 367 396 368 Meters 365

H 10848 H 10850 H 10860 H 10870 H 10880 H 10890 H 10900 H 10910 H 10920 H 10930 H 10940 H 10950 H 10960 H 10967



SE